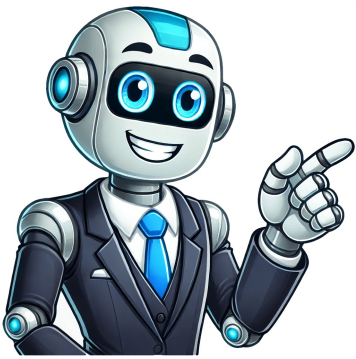


Continue





























Covering the right oil for your Kawasaki FR691V can feel overwhelming. Have you ever wondered if you're using the best oil for your engine? Using the wrong type can lead to performance issues and even engine damage, so it's crucial to get it right. In this article, you'll find straightforward recommendations on the best oil options for your FR691V.

We'll cover everything from viscosity ratings to synthetic versus conventional oils, ensuring you know exactly what your engine needs. With the right oil, you'll keep your mower running smoothly and efficiently, making your lawn care a breeze. Recommended Oil Types: For the Kawasaki FR691V, SAE 10W-30 and SAE 20W-50 are highly recommended; synthetic oils provide superior performance under varying conditions. Oil Change Frequency: Change the oil every 50 hours of operation or at least once a year to maintain optimal engine health. Performance Benefits: Using the right oil improves engine performance, extends lifespan, enhances fuel efficiency, and offers better temperature regulation. Engine Maintenance: Regularly check oil levels, use quality filters, and properly dispose of old oil to ensure efficient engine operation. Dispelling Myths: Understand common misconceptions, such as the belief that synthetic oils are always superior or that oil changes aren't necessary if the oil looks clean. Quality Matters: Reputable oil brands that meet API standards, as well as all oils provide equal protection and performance for your engine. The Kawasaki FR691V is a powerful engine commonly used in lawn mowers and other outdoor equipment. It's known for its reliability and efficiency, making it a popular choice among homeowners and professionals alike. Ensuring it receives the right lubrication is crucial for maintaining its performance and longevity. This guide provides comprehensive information on selecting the best oil for your FR691V, covering various aspects like viscosity, synthetic vs. conventional, oil change frequency, and more. Equipped with a pressurized lubrication system, it ensures consistent oil flow, enhancing engine longevity. Choosing the right oil is crucial to maintain the engine's performance. The recommended oil types for the Kawasaki FR691V include: SAE 10W-30: Suitable for temperatures above 32°F, this viscosity maintains proper lubrication in a wide range of conditions. SAE 20W-50: Ideal for high-temperature applications, this oil viscosity provides excellent protection during heavy use. Synthetic Oils: Synthetic oils offer superior performance, especially in extreme temperatures and prolong oil change intervals. Regular oil changes keep the engine running smoothly. Generally, you should change the oil every 50 hours of operation or at least once a year. This frequency helps maintain performance and prevent buildup of contaminants. Check Oil Level: Regularly inspect the oil level to ensure it's within the proper range. Low oil levels can cause engine damage. Use the Right Filter: Use a quality oil filter, as it plays a significant role in keeping contaminants out of the engine. Dispose of Old Oil Properly: When changing oil, dispose of the old oil in accordance with local regulations to protect the environment. Following these guidelines ensures your Kawasaki FR691V runs efficiently, making lawn care tasks easier and more effective. Choosing the right oil for your Kawasaki FR691V engine enhances performance and extends its lifespan. Here are the most recommended oil types. SAE 10W-30 Synthetic Oil: Offers excellent performance in a wide range of temperatures, making it suitable for various weather conditions. The synthetic formulation provides superior protection against wear and sludge buildup. SAE 20W-50 Synthetic Oil: Ideal for higher operating temperatures, this oil maintains viscosity under extreme heat. It ensures that the engine runs smoothly, especially during heavy-duty tasks. SAE 10W-30 Conventional Oil: A cost-effective choice for users who prefer traditional oil. Suitable for mild temperatures, this option may need more frequent changes due to lower thermal stability compared to synthetics. Always consult the owner's manual for specific guidance based on your engine's model and usage. Oil Color and Consistency: If the oil appears dark, gritty, or milky, it's time for a change. Increased Engine Noise: Unusual sounds may indicate that the oil is breaking down and not providing proper lubrication. Oil Level Drop: Consistently low oil levels require immediate attention, suggesting oil consumption or leaks. Warning Lights: Dashboard warning lights related to oil pressure reflect the necessity for an oil change. Mileage: Following the recommended mileage (typically every 100 hours of operation or once a season) is advisable, even if no other signs are present. Using the right oil in your Kawasaki FR691V offers several crucial benefits that enhance performance and longevity. Choosing the correct oil ensures smooth engine operation. Proper lubrication minimizes friction between moving parts, resulting in better efficiency. For example, using SAE 10W-30 or SAE 20W-50 helps maintain optimal oil pressure, which is essential for cooling and protecting the engine. Various oil grades and viscosities significantly impact how well your engine performs. Thinner oils like SAE 10W-30 allow for easier flow, reducing the energy required to pump the oil through the engine. High-quality oil also helps reduce heat generated during operation and circulates it away from critical components. This regulation prevents overheating, reducing the risk of engine damage and ensuring consistent performance. Using the correct oil boosts engine reliability. High-performance oils provide superior protection against contaminants and oxidation. This reliability allows you to trust your engine during tasks, whether mowing your lawn or tackling tougher jobs. Investing in the right oil cuts down on future maintenance costs. Less friction and wear lead to fewer repairs and component replacements. By regularly using the correct oil and following recommended change intervals, you maintain the engine's optimal condition and reduce long-term expenses. Maintaining the right oil in your Kawasaki FR691V not only ensures better performance but also contributes to overall engine health, saving you time and money in the long run. Many myths surround oil use for the Kawasaki FR691V. Understanding these misconceptions can help you make better choices for your engine. Synthetic oil's perceived superiority often confuses users. While synthetic oil, such as SAE 10W-30, offers benefits like better temperature stability and longer intervals between changes, conventional oil can still perform well in specific conditions. It's essential to select the oil type that fits your engine's needs. Some believe that oil changes are optional if the oil appears clean. Oil can look clean for a while, but it still breaks down over time. Regular changes every 50 hours of operation help ensure the engine runs smoothly and efficiently. Many think using thicker oil, like SAE 20W-50, guarantees better protection for the engine. However, excessive thickness can cause poor lubrication and increased drag. Follow the manufacturer's recommendations. Older engines already contain additives that maximize performance. Unnecessary additives might disrupt the oil's balance, leading to potential engine damage. Many think older engines need different oil types for optimal performance. In reality, selecting oil viscosity based on climate and manufacturer's specifications is crucial, irrespective of engine age. Old engines can benefit from modern oils formulated with improved protective properties. By dispelling these misconceptions, you can confidently choose the right oil for your Kawasaki FR691V, ensuring optimal engine performance and longevity. Choosing the right oil for your Kawasaki FR691V is crucial for keeping your engine running smoothly. By sticking to the recommended synthetic oils like SAE 10W-30 and SAE 20W-50 you can enhance performance and extend the life of your engine. Regular oil changes and monitoring oil levels will make a noticeable difference. Don't let misconceptions steer you wrong; understanding the facts about oil types and maintenance practices will help you make informed decisions. With the right care and attention your Kawasaki can provide dependable service for years to come. Enjoy your rides knowing you're doing everything you can to keep your engine in top shape. Use synthetic oils like SAE 10W-30 or SAE 20W-50 for optimal performance. These oils enhance engine efficiency and reliability. It's recommended to change the oil every 50 hours of operation or at least once per season to maintain performance and longevity. While synthetic oil is preferred for better lubrication and performance, conventional oil can be used. However, regular changes are essential. Not necessarily. Thicker oil can lead to reduced efficiency. It's essential to use oil that meets the manufacturer's specifications. Yes, using high-quality, reputable brands is important for optimal engine performance and protection against wear and tear. Generally, quality oils already have additives. Adding extra ones may not provide additional benefits and can sometimes be harmful. Not really. Most older engines already contain additives that maximize performance. Unnecessary additives might disrupt the oil's balance, leading to potential engine damage. Many think older engines need different oil types for optimal performance. In reality, selecting oil viscosity based on climate and manufacturer's specifications is crucial, irrespective of engine age. Old engines can benefit from modern oils formulated with improved protective properties. By dispelling these misconceptions, you can confidently choose the right oil for your Kawasaki FR691V, ensuring optimal engine performance and longevity. Choosing the right oil for your Kawasaki FR691V is crucial for keeping your engine running smoothly. By sticking to the recommended synthetic oils like SAE 10W-30 and SAE 20W-50 you can enhance performance and extend the life of your engine. Regular oil changes and monitoring oil levels will make a noticeable difference. Don't let misconceptions steer you wrong; understanding the facts about oil types and maintenance practices will help you make informed decisions. With the right care and attention your Kawasaki can provide dependable service for years to come. Enjoy your rides knowing you're doing everything you can to keep your engine in top shape. Use synthetic oils like SAE 10W-30 or SAE 20W-50 for optimal performance. These oils enhance engine efficiency and reliability. It's recommended to change the oil every 50 hours of operation or at least once per season to maintain performance and longevity. While synthetic oil is preferred for better lubrication and performance, conventional oil can be used. However, regular changes are essential. Not necessarily. Thicker oil can lead to reduced efficiency. It's essential to use oil that meets the manufacturer's specifications. Yes, using high-quality, reputable brands is important for optimal engine performance and protection against wear and tear. Generally, quality oils already have additives. Adding extra ones may not provide additional benefits and can sometimes be harmful. Not really. Most older engines already contain additives that maximize performance. Unnecessary additives might disrupt the oil's balance, leading to potential engine damage. Many think older engines need different oil types for optimal performance. In reality, selecting oil viscosity based on climate and manufacturer's specifications is crucial, irrespective of engine age. Old engines can benefit from modern oils formulated with improved protective properties. By dispelling these misconceptions, you can confidently choose the right oil for your Kawasaki FR691V, ensuring optimal engine performance and longevity. Choosing the right oil for your Kawasaki FR691V is crucial for keeping your engine running smoothly. By sticking to the recommended synthetic oils like SAE 10W-30 and SAE 20W-50 you can enhance performance and extend the life of your engine. Regular oil changes and monitoring oil levels will make a noticeable difference. Don't let misconceptions steer you wrong; understanding the facts about oil types and maintenance practices will help you make informed decisions. With the right care and attention your Kawasaki can provide dependable service for years to come. Enjoy your rides knowing you're doing everything you can to keep your engine in top shape. Use synthetic oils like SAE 10W-30 or SAE 20W-50 for optimal performance. These oils enhance engine efficiency and reliability. It's recommended to change the oil every 50 hours of operation or at least once per season to maintain performance and longevity. While synthetic oil is preferred for better lubrication and performance, conventional oil can be used. However, regular changes are essential. Not necessarily. Thicker oil can lead to reduced efficiency. It's essential to use oil that meets the manufacturer's specifications. Yes, using high-quality, reputable brands is important for optimal engine performance and protection against wear and tear. Generally, quality oils already have additives. Adding extra ones may not provide additional benefits and can sometimes be harmful. Not really. Most older engines already contain additives that maximize performance. Unnecessary additives might disrupt the oil's balance, leading to potential engine damage. Many think older engines need different oil types for optimal performance. In reality, selecting oil viscosity based on climate and manufacturer's specifications is crucial, irrespective of engine age. Old engines can benefit from modern oils formulated with improved protective properties. By dispelling these misconceptions, you can confidently choose the right oil for your Kawasaki FR691V, ensuring optimal engine performance and longevity. Choosing the right oil for your Kawasaki FR691V is crucial for keeping your engine running smoothly. By sticking to the recommended synthetic oils like SAE 10W-30 and SAE 20W-50 you can enhance performance and extend the life of your engine. Regular oil changes and monitoring oil levels will make a noticeable difference. Don't let misconceptions steer you wrong; understanding the facts about oil types and maintenance practices will help you make informed decisions. With the right care and attention your Kawasaki can provide dependable service for years to come. Enjoy your rides knowing you're doing everything you can to keep your engine in top shape. Use synthetic oils like SAE 10W-30 or SAE 20W-50 for optimal performance. These oils enhance engine efficiency and reliability. It's recommended to change the oil every 50 hours of operation or at least once per season to maintain performance and longevity. While synthetic oil is preferred for better lubrication and performance, conventional oil can be used. However, regular changes are essential. Not necessarily. Thicker oil can lead to reduced efficiency. It's essential to use oil that meets the manufacturer's specifications. Yes, using high-quality, reputable brands is important for optimal engine performance and protection against wear and tear. Generally, quality oils already have additives. Adding extra ones may not provide additional benefits and can sometimes be harmful. Not really. Most older engines already contain additives that maximize performance. Unnecessary additives might disrupt the oil's balance, leading to potential engine damage. Many think older engines need different oil types for optimal performance. In reality, selecting oil viscosity based on climate and manufacturer's specifications is crucial, irrespective of engine age. Old engines can benefit from modern oils formulated with improved protective properties. By dispelling these misconceptions, you can confidently choose the right oil for your Kawasaki FR691V, ensuring optimal engine performance and longevity. Choosing the right oil for your Kawasaki FR691V is crucial for keeping your engine running smoothly. By sticking to the recommended synthetic oils like SAE 10W-30 and SAE 20W-50 you can enhance performance and extend the life of your engine. Regular oil changes and monitoring oil levels will make a noticeable difference. Don't let misconceptions steer you wrong; understanding the facts about oil types and maintenance practices will help you make informed decisions. With the right care and attention your Kawasaki can provide dependable service for years to come. Enjoy your rides knowing you're doing everything you can to keep your engine in top shape. Use synthetic oils like SAE 10W-30 or SAE 20W-50 for optimal performance. These oils enhance engine efficiency and reliability. It's recommended to change the oil every 50 hours of operation or at least once per season to maintain performance and longevity. While synthetic oil is preferred for better lubrication and performance, conventional oil can be used. However, regular changes are essential. Not necessarily. Thicker oil can lead to reduced efficiency. It's essential to use oil that meets the manufacturer's specifications. Yes, using high-quality, reputable brands is important for optimal engine performance and protection against wear and tear. Generally, quality oils already have additives. Adding extra ones may not provide additional benefits and can sometimes be harmful. Not really. Most older engines already contain additives that maximize performance. Unnecessary additives might disrupt the oil's balance, leading to potential engine damage. Many think older engines need different oil types for optimal performance. In reality, selecting oil viscosity based on climate and manufacturer's specifications is crucial, irrespective of engine age. Old engines can benefit from modern oils formulated with improved protective properties. By dispelling these misconceptions, you can confidently choose the right oil for your Kawasaki FR691V, ensuring optimal engine performance and longevity. Choosing the right oil for your Kawasaki FR691V is crucial for keeping your engine running smoothly. By sticking to the recommended synthetic oils like SAE 10W-30 and SAE 20W-50 you can enhance performance and extend the life of your engine. Regular oil changes and monitoring oil levels will make a noticeable difference. Don't let misconceptions steer you wrong; understanding the facts about oil types and maintenance practices will help you make informed decisions. With the right care and attention your Kawasaki can provide dependable service for years to come. Enjoy your rides knowing you're doing everything you can to keep your engine in top shape. Use synthetic oils like SAE 10W-30 or SAE 20W-50 for optimal performance. These oils enhance engine efficiency and reliability. It's recommended to change the oil every 50 hours of operation or at least once per season to maintain performance and longevity. While synthetic oil is preferred for better lubrication and performance, conventional oil can be used. However, regular changes are essential. Not necessarily. Thicker oil can lead to reduced efficiency. It's essential to use oil that meets the manufacturer's specifications. Yes, using high-quality, reputable brands is important for optimal engine performance and protection against wear and tear. Generally, quality oils already have additives. Adding extra ones may not provide additional benefits and can sometimes be harmful. Not really. Most older engines already contain additives that maximize performance. Unnecessary additives might disrupt the oil's balance, leading to potential engine damage. Many think older engines need different oil types for optimal performance. In reality, selecting oil viscosity based on climate and manufacturer's specifications is crucial, irrespective of engine age. Old engines can benefit from modern oils formulated with improved protective properties. By dispelling these misconceptions, you can confidently choose the right oil for your Kawasaki FR691V, ensuring optimal engine performance and longevity. Choosing the right oil for your Kawasaki FR691V is crucial for keeping your engine running smoothly. By sticking to the recommended synthetic oils like SAE 10W-30 and SAE 20W-50 you can enhance performance and extend the life of your engine. Regular oil changes and monitoring oil levels will make a noticeable difference. Don't let misconceptions steer you wrong; understanding the facts about oil types and maintenance practices will help you make informed decisions. With the right care and attention your Kawasaki can provide dependable service for years to come. Enjoy your rides knowing you're doing everything you can to keep your engine in top shape. Use synthetic oils like SAE 10W-30 or SAE 20W-50 for optimal performance. These oils enhance engine efficiency and reliability. It's recommended to change the oil every 50 hours of operation or at least once per season to maintain performance and longevity. While synthetic oil is preferred for better lubrication and performance, conventional oil



40 with an API classification of SJ or higher for optimal results. Remember to always follow the manufacturer's recommendations and perform regular maintenance on your lawn mower. Jennifer This blog serves as a resource where I share first-hand insights on a wide range of products, offering genuine reviews and recommendations. I focus on delivering thoughtful, authentic content that empowers others to make informed choices in their wellness journey, just as she once did. Your Kawasaki FR691V engine is the heart of your outdoor power equipment, whether it's powering a lawnmower, generator, or other machinery. Just like any other complex machine, it relies on the right fuel and lubrication to perform at its best and last for years to come. Choosing the right engine oil is crucial for maintaining your FR691V's performance, longevity, and overall reliability.Using the incorrect oil can lead to a range of problems, from decreased fuel efficiency and engine wear to catastrophic engine failure. This comprehensive guide will delve into the specifics of what kind of engine oil your Kawasaki FR691V needs, exploring the factors to consider, the recommended oil types, and the potential consequences of using the wrong oil.Understanding Your Kawasaki FR691V EngineThe Kawasaki FR691V is a powerful, reliable, and popular four-stroke gasoline engine known for its durability and performance. To understand the best oil for your engine, it's essential to grasp its key characteristics.Engine Type and Lubrication NeedsThe FR691V is a four-stroke engine, meaning it requires oil for lubrication. Unlike two-stroke engines, which mix oil with fuel, four-stroke engines have a separate oil sump that holds the lubricant. The oil circulates through the engine, reducing friction between moving parts, preventing wear and tear, and dissipating heat.Oil Viscosity and Operating ConditionsOil viscosity refers to its thickness or resistance to flow. It's crucial to choose the correct viscosity for your engine and operating conditions. Oil that is too thick will struggle to flow properly, leading to reduced lubrication and increased engine wear. Conversely, oil that is too thin may not provide adequate protection against friction and heat.Recommended Engine Oil for Kawasaki FR691VKawasaki recommends using SAE 10W-30 oil for the FR691V engine. This viscosity grade is suitable for a wide range of operating temperatures and provides optimal lubrication for this engine type.API Service ClassificationIn addition to viscosity, it's important to consider the API service classification of the oil. The API (American Petroleum Institute) sets standards for engine oil performance. Kawasaki recommends using oil with an API service classification of SM or higher.\*\*Oil Type: Conventional vs. SyntheticYou have two primary choices when selecting oil for your FR691V: conventional and synthetic.Conventional OilConventional oil is refined from crude oil and offers basic lubrication protection. It's generally more affordable than synthetic oil.Synthetic OilSynthetic oil is manufactured through a chemical process and offers superior performance compared to conventional oil. It provides better lubrication, heat resistance, and oxidation stability, extending engine life and improving fuel efficiency.While synthetic oil is more expensive, its long-term benefits often outweigh the initial cost. (See Also: When Your Car Is Leaking Oil? What To Do Next)Consequences of Using the Wrong Engine OilUsing the wrong engine oil can have serious consequences for your FR691V. Here are some potential problems:Engine Wear and TearIf the oil is too thick, it won't flow properly, leading to insufficient lubrication and increased friction between moving parts. This can cause premature wear and tear on engine components, shortening the engine's lifespan.OverheatingOil helps dissipate heat generated by the engine. If the oil is too thin or inadequate for the operating conditions, it may not be able to effectively transfer heat away from the engine, leading to overheating. Overheating can damage engine components and reduce performance.Reduced Fuel EfficiencyUsing the wrong oil viscosity can increase engine resistance, requiring more fuel to maintain the same speed and load. This results in reduced fuel efficiency and higher operating costs.Engine FailureIn severe cases, using the wrong engine oil can lead to catastrophic engine failure. This can be extremely costly to repair or replace.Maintaining Your FR691V Engine with Proper Oil ChangesRegular oil changes are essential for maintaining your FR691V's health and performance.Oil Change FrequencyKawasaki recommends changing the oil every 100 hours of operation or annually\*\*, whichever comes first. However, it's important to consult your owner's manual for specific recommendations based on your usage patterns and operating conditions.Oil Change ProcedureWhile it's always best to consult your owner's manual for detailed instructions, the general oil change procedure for your FR691V involves the following steps:1. Warm up the engine for a few minutes to allow the oil to flow more easily. (See Also: How Many Quarts Of Oil In A 5.3 Chevy Engine? - Find Out Now!)2. Locate the oil drain plug\*\* and place a drain pan underneath.3. Carefully remove the drain plug\*\* and allow the oil to drain completely.4. Replace the drain plug\*\* and tighten it securely.5. Remove the oil filler cap\*\* and add the recommended amount of fresh oil.6. \*\*Check the oil level\*\* with the dipstick and add more oil if necessary.7. \*\*Replace the oil filler cap\*\* and start the engine.8. \*\*Check for leaks\*\* around the drain plug and oil filler cap.What Kind of Engine Oil for Kawasaki FR691V? - FAQsWhat is the best oil for my Kawasaki FR691V?Kawasaki recommends using SAE 10W-30 oil with an API service classification of SM or higher.Can I use synthetic oil in my FR691V?Yes, synthetic oil is a good choice for your FR691V as it offers superior performance and protection compared to conventional oil.How often should I change the oil in my FR691V?Kawasaki recommends changing the oil every 100 hours of operation or annually, whichever comes first. (See Also: What Happens if There Is too Much Oil in Engine? Catastrophic Consequences)What happens if I use the wrong oil in my FR691V?Using the wrong oil can lead to engine wear, overheating, reduced fuel efficiency, and even engine failure.Where can I find the correct oil for my FR691V?You can find the correct oil at most auto parts stores, lawnmower dealerships, or online retailers.Recap: Choosing the Right Engine Oil for Your Kawasaki FR691VMaintaining your Kawasaki FR691V engine requires attention to detail, and choosing the right engine oil is a crucial aspect of that process.Understanding your engine's needs, considering factors like viscosity and API service classification, and following recommended oil change intervals are essential for ensuring optimal performance, longevity, and reliability.By adhering to these guidelines, you can keep your FR691V running smoothly for years to come.Remember, using the correct oil is an investment in the health and performance of your valuable equipment. Are you unsure about what oil to use in your Kawasaki FR691V? You're not alone. Many owners face this question, and using the right oil is crucial for keeping your engine running smoothly and efficiently. Choosing the right oil for your Kawasaki FR691V is essential for optimal engine performance, efficiency, and longevity.High-quality oil protects engine components from wear, heat, and corrosion, minimizing costly repairs. The recommended viscosity for the Kawasaki FR691V is typically 10W-30, offering reliable performance across various temperatures. Synthetic oils can improve fuel economy, helping you save money over time. Examples of synthetic oils suitable for the Kawasaki FR691V include Mobil 1 10W-30 and Castrol Edge 10W-30. Always check the manufacturer's specifications before selecting an oil brand. Conventional oil can also be used in the Kawasaki FR691V engine, particularly for routine maintenance. It's generally more affordable than synthetic options. Notable features include: Cost-Effective: Conventional oil offers a budget-friendly choice for those who perform regular oil changes. Adequate Performance: It provides sufficient protection for normal driving conditions, ensuring that the engine runs smoothly. Availability: Conventional oil is readily available at most automotive stores. Popular conventional oils are Shell Rotella 10W-30 and Pennzoil 10W-30. If you opt for conventional oil, ensure timely oil changes to maintain performance. Oil viscosity ratings indicate how well oil flows at different temperatures. Higher numbers represent thicker oils, while lower numbers indicate thinner oils. Understanding these ratings helps ensure optimal engine performance for your Kawasaki FR691V. SAE (Society of Automotive Engineers) ratings provide a standardized method to categorize oil viscosity. These ratings can appear as a single number, such as 30, or as a combination, such as 10W-30. The "W" stands for winter, indicating the oil's viscosity at low temperatures. For example, 10W-30 oil flows like a 10-weight oil in cold conditions but behaves like a 30-weight oil at higher temperatures. This versatility benefits your engine by providing protection in both cold starts and when operating at higher temperatures. For the Kawasaki FR691V engine, the recommended viscosity is typically 10W-30. This rating offers excellent performance across a range of temperatures. It ensures your engine runs smoothly in both seasonal extremes, providing reliable protection and efficiency. Always check your owner's manual for any specific manufacturer recommendations or changes. By using the right viscosity oil, you improve engine performance and extend its lifespan. Choosing the right oil for your Kawasaki FR691V engine involves several key factors that influence its performance and longevity. Pay attention to these considerations for optimal results. Climate and temperature play a significant role in oil selection. If you live in a colder climate, consider using 10W-30 synthetic oil. Synthetic oils perform better in low temperatures, ensuring easier starts and better lubrication during cold weather. In warmer climates, conventional 10W-30 oil is also suitable. The essential factor here is to match the oil type to the typical operating temperature of your environment. Usage frequency and operating conditions impact oil degradation. If you use your Kawasaki FR691V frequently, opt for synthetic oil for its superior resistance to breakdown and longer intervals between oil changes. For occasional use, conventional oil suffices, but remember to change it regularly to avoid sludge buildup. Consider your mowing conditions too; if the engine works hard on tough terrain or under heavy loads, synthetic oil provides better protection against wear and overheating. Choosing the right oil for your Kawasaki FR691V is key to keeping your engine running smoothly. Whether you opt for synthetic or conventional oil make sure it meets the recommended viscosity of 10W-30. Your choice can significantly impact performance and longevity so consider your specific needs and conditions. Regular maintenance and timely oil changes will help you avoid costly repairs down the line. By following these guidelines you're not just protecting your engine but also ensuring it operates at its best for years to come. Happy riding! For the Kawasaki FR691V engine, it is recommended to use either synthetic oil, like Mobil 1 10W-30, or conventional oil, such as Shell Rotella 10W-30. Both options provide adequate performance, but synthetic oils offer superior protection and better fuel efficiency. Choosing the right oil is vital for protecting your engine, enhancing performance, improving fuel efficiency, and regulating temperature. High-quality oil minimizes wear and heat, ensuring smooth operation and prolonging engine life. The recommended viscosity for the Kawasaki FR691V engine is typically 10W-30. This viscosity offers reliable performance across varying temperatures, ensuring optimal engine protection and efficiency. Regular oil changes are essential for maintaining the performance of your engine. If using conventional oil, it is advisable to change the oil every 50 hours of operation or per the manufacturer's guidelines for best results. When selecting oil for your Kawasaki FR691V engine, consider climate and temperature, frequency of use, and operating conditions. These factors will help you determine whether synthetic or conventional oil is more suitable for your needs. Yes, synthetic oil provides several advantages, including superior engine protection, improved viscosity, enhanced resistance to wear and sludge formation, and better fuel efficiency compared to conventional oil. The Kawasaki FR691V is a robust and reliable engine known for its performance in various applications, particularly lawn care and other outdoor equipment. Selecting the appropriate oil weight for this engine is crucial for maintaining its efficiency and longevity. Using the wrong oil can lead to increased wear and tear, reduced performance, and engine failure. Therefore, understanding oil weight, viscosity, and manufacturer recommendations is essential for every Kawasaki FR691V owner. In this comprehensive guide, we will explore the recommended oil weight for the Kawasaki FR691V, discuss the importance of choosing the right oil, and offer tips for maintaining optimal engine performance. We will highlight the differences between synthetic and conventional oils, guide oil change frequency, and suggest best practices for selecting and handling oil. By the end of this article, you will thoroughly understand how to choose the right oil weight for your Kawasaki FR691V engine. Kawasaki FR691V Specifications Feature Specification Engine Type 4-stroke, V-twin, OHV Displacement 726cc Bore x Stroke 78.0 x 76.0 mm Maximum Power Output 23 HP (17.2 kW) @ 3,600 rpm Cooling System Air-cooled Fuel Type Gasoline Carburetor Float type Lubrication System Forced lubrication Oil Capacity 2.0 liters Ignition System Magneto spark Starter System Electric start Dimensions (L x W x H) 508 x 415 x 370 mm Dry Weight 40 kg (88 lbs) Understanding Oil Weight for the Kawasaki FR691V Before discussing the specific recommendations for the Kawasaki FR691V, it is essential to grasp the concept of oil weight. Oil weight, often called viscosity, describes how thick or thin the oil is at specific temperatures. This characteristic significantly affects how well the oil lubricates engine components, fuel efficiency, and overall performance. Oil weight is typically measured using the Society of Automotive Engineers (SAE) grading system. For example, an oil labeled 10W-30 has two numbers representing its viscosity: the first number (10W) indicates the oil's viscosity in cold temperatures. In contrast, the second number (30) represents its viscosity at higher temperatures. The "W" stands for winter, indicating that the oil performs well in cold conditions. Lower viscosity oils flow more easily when temperatures drop, allowing for better lubrication during cold starts. Conversely, higher-viscosity oils maintain their thickness as temperatures rise, providing essential protection against wear. Therefore, choosing the right oil weight based on the operating conditions of your Kawasaki FR691V is vital. Recommended Oil Weight for the Kawasaki FR691V Choosing the right oil is critical for the Kawasaki FR691V engine to ensure optimal performance and longevity. This air-cooled engine, designed for demanding tasks, requires oil that can maintain its properties under high operating temperatures and heavy use. General Use Oil For most conditions, Kawasaki recommends SAE 10W-40 oil. This oil grade is ideal for various temperatures and protects from cold starts to summer heat. It maintains its viscosity and lubricates the engine efficiently, keeping wear and tear to a minimum. Cold Weather Oil In colder climates, where temperatures fall below 32°F (0°C), SAE 5W-30 or 10W-30 is a better option. These oils offer improved cold-start performance and ensure proper lubrication during cooler weather, preventing engine strain during startup. Extreme Heat Oil For sweltering conditions, where temperatures exceed 104°F (40°C), SAE 20W-50 is recommended. This oil is designed to withstand high heat, maintaining its thickness and protective qualities even in extreme temperatures, which prevents engine damage from overheating. Synthetic Oil Option Synthetic oils, like the SAE 10W-40 synthetic blend, are also suitable for the Kawasaki FR691V. They provide enhanced protection, especially under extreme conditions. These oils resist breakdown and maintain their viscosity longer, making them ideal for engines that face heavy or prolonged use. Oil Change Intervals Regular oil changes are essential to keep the engine running smoothly. Kawasaki suggests the first oil change for new engines after 8 hours of use, then every 100 hours or annually thereafter. Check the oil level regularly and replace the oil filter during each oil change. Using the appropriate oil for the Kawasaki FR691V engine can ensure consistent performance, reduce wear, and extend the engine's lifespan. Ideal Oil Weight for Different Operating Temperatures SAE 10W-30: This oil weight is generally recommended for moderate temperatures, typically ranging from 0°F to 100°F (-18°C to 38°C). It provides excellent protection for the engine while ensuring that it remains adequately lubricated during cold starts and high-temperature operations. SAE 10W-40: This oil weight is ideal for higher temperature environments, often recommended when the ambient temperature exceeds 100°F (38°C). The higher viscosity at elevated temperatures ensures the oil maintains its protective qualities, thereby reducing engine wear. Seasonal Changes and Oil Weight Choices As seasons change, so do temperature ranges, affecting oil performance. During colder months, switching to a lower-viscosity oil, such as SAE 10W-30, may be beneficial to facilitate easier starts and better lubrication. Conversely, SAE 10W-40 during hot summer can provide additional protection against heat and wear. Synthetic vs. Conventional Oil When choosing oil for the Kawasaki FR691V, it's essential to consider synthetic or conventional oil. Both types have advantages and disadvantages, depending on your engine's needs and operating conditions. Benefits of Using Synthetic Oil Enhanced Performance: Synthetic oils generally offer better performance in extreme temperatures. They provide superior lubrication during cold starts and maintain their viscosity at high temperatures, reducing wear. Longer Oil Change Intervals: Synthetic oils last longer than conventional oils, so that you can go longer between oil changes. This can save you time and money over the long term. Improved Fuel Efficiency: Many synthetic oils are formulated to reduce friction, which can lead to better fuel efficiency. This improvement can be particularly beneficial for those who use their Kawasaki FR691V for extensive operations. Better Engine Cleanliness: Synthetic oils often contain additives that help keep the engine clean by preventing sludge and deposit buildup. This quality is essential for maintaining engine performance over time. Situations Where Conventional Oil May Be Suitable Low Mileage Usage: Conventional oil may suffice if you use your Kawasaki FR691V infrequently or for light-duty tasks. The lower cost can be a significant advantage for occasional users. Budget Considerations: Conventional oils are generally less expensive than synthetic oils. This can make a substantial difference in overall maintenance costs for budget-conscious users. Older Engines: Some older engines may benefit from conventional oils, as they are designed for different lubrication characteristics. However, it is still advisable to consult the manufacturer's recommendations. Cost Comparison and Performance Impact While synthetic oils may be more expensive initially, their longer lifespan and enhanced performance can offset the initial cost. In many cases, the investment in synthetic oil leads to lower maintenance costs, as fewer oil changes are required, and engine longevity is often improved. Oil Change Frequency Regular oil changes are vital for keeping the Kawasaki FR691V engine running smoothly. The frequency of oil changes depends on several factors, including the type of oil used, operating conditions, and engine workload. Recommended Oil Change Intervals For Synthetic Oil: If you choose to use synthetic oil, it is generally recommended to change it every 100-150 hours of operation or at least once a year, depending on usage. This interval allows for optimal performance and engine protection. For Conventional Oil: If using conventional oil, the recommended oil change interval is typically shorter, around 50-100 hours of operation. Traditional oils tend to break down more quickly, particularly under high-stress conditions. Heavy-Duty Usage: If your Kawasaki FR691V operates under heavy loads or extreme conditions, consider changing the oil more frequently. Regularly monitoring the oil's appearance and performance can help determine when to change it. Importance of Regular Maintenance Regular maintenance is crucial for extending the life of your Kawasaki FR691V engine. Frequent oil changes help remove contaminants, sludge, and other debris that can accumulate over time. By maintaining proper oil levels and quality, you ensure that the engine runs smoothly and efficiently. Tips for Choosing the Right Oil Selecting the correct oil for your Kawasaki FR691V engine involves several considerations. Here are some tips to guide you in making the best choice: Follow Manufacturer Recommendations: For specific oil weight recommendations, refer to the owner's manual. The manufacturer's guidelines are designed to ensure optimal performance and longevity. Consider Operating Conditions: Evaluate the typical conditions under which you operate your engine. Adjusting your oil weight and type may be necessary if you frequently work in extreme temperatures or heavy-duty situations. Research Oil Brands: Not all oils are created equal. Look for reputable brands known for quality and performance. Reading reviews and product specifications can help you make an informed decision. Check for API Certification: Ensure your selected oil meets the American Petroleum Institute (API) certification standards. This certification indicates that the oil has been tested for quality and performance. Assess Oil Properties: Review the oil's properties, including its viscosity ratings, additives, and other characteristics. Understanding these factors will help you choose an oil that meets your engine's needs. Proper Storage and Handling: Store oil in a cool, dry place and ensure that containers are tightly sealed to prevent contamination. Additionally, always check the oil's expiration date and appearance before use. How to Read Oil Labels Reading oil labels can be confusing, especially with numerous grades and specifications available. Here's a breakdown of what to look for when selecting oil for your Kawasaki FR691V: Viscosity Ratings: Look for the viscosity ratings that match the manufacturer's recommendations, such as SAE 10W-30 or SAE 10W-40. API Certification Mark: Ensure the oil has the API certification mark, indicating it meets industry standards. Additives Information: Many oils contain additives that enhance performance. Look for information on detergents, anti-wear agents, and friction modifiers. Synthetic vs. Conventional: Based on your engine's requirements and operating conditions, identify whether the oil is synthetic, conventional, or a blend. Conclusion Choosing the right oil weight for your Kawasaki FR691V is essential for maintaining engine performance and longevity. By understanding oil weight and viscosity, you can select the most suitable oil based on the manufacturer's recommendations and your operating conditions. Synthetic oil offers several advantages, including enhanced performance and longer oil change intervals. However, conventional oil may still be appropriate for some users, particularly those with budget considerations or less demanding applications. Regardless of the oil type chosen, regular oil changes and maintenance are vital for ensuring optimal engine performance. By following the tips outlined in this article, you can make informed decisions about oil selection, leading to improved engine efficiency and durability. With this comprehensive guide, you are now equipped with the knowledge needed to keep your Kawasaki FR691V running smoothly for years. The Kawasaki FR691V is a robust and reliable engine designed to power a variety of heavy-duty outdoor equipment. To ensure optimal performance and extend the lifespan of this engine, choosing the right oil is critical. In this comprehensive guide, we'll explore the best oil options for the Kawasaki FR691V, provide maintenance tips, and discuss troubleshooting issues related to engine lubrication. Why Oil Choice Matters for the Kawasaki FR691V Oil serves as the lifeblood of your engine, reducing friction, dissipating heat, and protecting internal components. Using the wrong type of oil can lead to suboptimal performance, increased wear, and costly repairs. The Kawasaki FR691V engine, known for its durability, performs best when paired with a suitable oil that matches its specifications. Key Considerations When Choosing Oil Before delving into the best oils for the Kawasaki FR691V, it's essential to understand the factors influencing oil selection: Viscosity: Choose oil with the right viscosity grade, such as SAE 10W-40, which is ideal for most operating conditions. API Classification: Look for oils with an API rating of SJ or higher for compatibility with the engine's design. Operating Temperature: Consider the climate and working environment, as these affect oil performance. Synthetic vs. Conventional: Synthetic oils offer superior protection and stability but come at a higher cost compared to conventional oils. Best Oil Recommendations for the Kawasaki FR691V Here are the top oil choices for the Kawasaki FR691V engine: Kawasaki 4-Cycle Engine Oil SAE 10W-40: Specifically formulated for Kawasaki engines, this oil ensures peak performance and protection. Mobil 1 Synthetic SAE 10W-30: A popular synthetic option that provides excellent wear protection and extended oil life. Castrol GTX SAE 10W-40: A reliable conventional oil that balances affordability with high-quality engine protection. Each of these oils meets or exceeds the manufacturer's specifications, making them excellent choices for your engine. For detailed specifications, you can refer to the official Kawasaki Engines website. Step-by-Step Oil Change Process for the Kawasaki FR691V Performing regular oil changes is vital for maintaining your engine. Here's how to change the oil in your Kawasaki FR691V: Gather Supplies: You'll need the recommended oil, an oil filter, a drain pan, a wrench, and a funnel. Warm the Engine: Run the engine for a few minutes to warm the oil, making it easier to drain. Drain the Old Oil: Locate the drain plug, position the drain pan underneath, and remove the plug to let the oil drain completely. Replace the Oil Filter: Remove the old filter using a filter wrench and replace it with a new one. Apply a thin layer of oil to the gasket of the new filter for a proper seal. Refill with New Oil: Use a funnel to pour the recommended amount of fresh oil into the engine. Check the level using the dipstick and adjust as necessary. Dispose of Used Oil: Properly dispose of the old oil and filter at a recycling facility. For additional maintenance tips, check out our oil maintenance guide. Troubleshooting Common Oil Issues Even with proper maintenance, oil-related issues can arise. Here's how to address common problems: Oil Consumption: If the engine is using more oil than usual, check for leaks or excessive blow-by caused by worn piston rings. Oil Contamination: Inspect the oil for signs of contamination, such as a milky appearance (water ingress) or a gritty texture (dirt). Replace the oil and investigate the source of contamination. Low Oil Pressure: Ensure the oil level is adequate and the correct viscosity is being used. If the problem persists, check the oil pump and pressure sensor. Conclusion Choosing the best oil for your Kawasaki FR691V engine is crucial for maintaining its performance and longevity. By selecting a high-quality oil, performing regular maintenance, and addressing any issues promptly, you can keep your engine running smoothly for years to come. Refer to the manufacturer's guidelines and consult professionals when needed to ensure you're providing the best care for your engine. Ready to enhance your engine maintenance routine? Explore more about Kawasaki engines and their care in our comprehensive resource section.