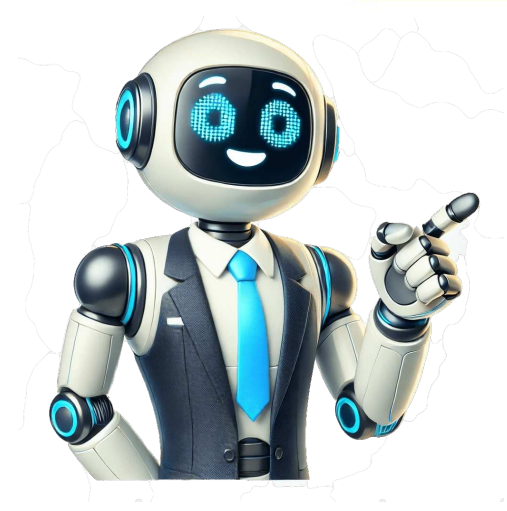


I'm not a bot



Academic Progress: Most pupils make rapid progress in re-engaging with learning Behaviour and Attitudes: Pupils behaviour in lessons and around the school is usually good; occasionally it is outstanding Qualifications and Training: Teachers use their good subject knowledge and effective questioning to enable pupils to learn well. Current Educational Practices: Leaders provide good support and training where relative weaknesses in practice are identified. Strengths and Challenges: Occasionally, less experienced teachers do not manage incidents of disruption in lessons well enough. Opportunities for Involvement: Leaders and governors engage effectively with parents to support the learning and well-being of all pupils. Communication: Close engagement with parents and carers ensures that pupils are safe. Handling Conflicts and Concerns: Governors effectively oversee the arrangements for managing the performance of all staff, including the headteacher. Actions for Quality Improvement: Leaders are taking effective action to secure and sustain good teaching, learning and assessment across the school. Managing Bullying and Safety: There is a strong culture of safeguarding throughout the school. Promoting Welfare and Safety: Staff work closely with parents and outside agencies when they identify any pupils who are vulnerable. Extracurricular Offerings: The curriculum is well designed and highly personalised with appropriate opportunities for enrichment. Balancing Academics and Extracurriculars: Leaders provide good additional support for disadvantaged pupils. Career Counselling Services: Pupils receive good-quality independent careers guidance. Managing and Supporting SEND: Teaching assistants provide good additional support for pupils with special educational needs and/or disabilities. Subjects Offered: Pupils have good opportunities to take GCSE examination courses in English, mathematics, and other subjects. 1 Hixberry Lane, St Albans, Hertfordshire, AL4 0TZ DOWNLOAD SCHOOL DATA Gender: Mixed 5 Pupils Type: Academy Converter Level: Not applicableLinks Academy with URN 139197, a Academy alternative provision converter located in Hertfordshire, city of St Albans, England. A Mixed school with a capacity of 40 students, the school campus is located at 1 Hixberry Lane, St Albans, Hertfordshire, AL4 0TZ, and you can contact them via their phone number 1727836150.Educational institution that fosters a community of students prepared for the challenges of tomorrow, committed to providing an excellent education for the future of their children in England.Professional Teachers: The school boasts a solid and harmonious team of workers who love their job.Quality Education: Always striving for academic excellence that motivates students to improve.Cutting-edge Technology: Equipped with the latest technologies to enhance teaching and student learning.Safe School: Always prioritising student safety with a welcoming environment.Active Learning: A learning process for students through participatory and practical activities.Student Monitoring: Continuous support to facilitate the educational growth of each student.DOWNLOAD SCHOOL INFORMATIONComprehensive information about Links AcademyHere at our comprehensive directory of all educational institutions across the United Kingdom, we provide all the essential information about this school in , St Albans. You can easily print or download this information in PDF or Microsoft Word format.ID: URN:139197 / UKPRN: 10040055 / UPRN: 200003633791School: Links Academy (number: 1106)LA: Hertfordshire (code: 919)Town: St AlbansCounty: HertfordshirePostcode: AL4 0TZSchool type: Academy alternative provision converterEstablishment type group: AcademiesEstablishment status: OpenReason establishment opened: Academy ConverterOpen date: 1/2/2013Street: 1 Hixberry Lane, St Albans, Hertfordshire, AL4 0TZWebsite: linksacademystalbans.co.uk/Telephone: 1727836150Phase of education: Not applicableGender: MixedSchool capacity: 40Teen mothers: Not applicableNumber of pupils: 5Number of boys: 4Number of girls: 1Age range: 11 to 16 yearsFSM: 4%Percentage FSM: 80%Trust school flag: Supported by a multi-academy trustTrusts: LINKS MULTI ACADEMY TRUSTSchool sponsors flag: Linked to a sponsorSchool sponsors: Links Academy TrustFederation flag: Not applicableFurther education type: Not applicableOfsted last inspection: 25/5/2023Ofsted special measures: Not applicableBoarders: No boardersNursery provision: Not applicableOfficial sixth form: Not applicableHeadteacher/Principal: David AllenReligious character: Does not applyReligious ethos: NoneDiocese: Not applicableAdmissions policy: Not applicableEspecial classes: Not applicableCensus date: 18/1/2024BSO inspectorate name: Not applicableSENPRU: Not applicableEBD: Not applicableSection 41 approved: Not applicableGOR: East of EnglandDistrict administrative: St AlbansAdministrative ward: Hill EndParliamentary constituency: St AlbansUrban rural: (England/Wales) Urban city and townCoordinates: 517883 (Easting), 206960 (Northing) / 51.748943 (Latitude), -0.29378285 (Longitude)MSOA: St Albans 021 (code: E02007090)LSOA: St Albans 021B (code: E01023677)Previous establishment number: 1111Ofsted rating: GoodLast changed date: 18/7/2024Downloaded from: schoolsearch.uk Welcome to Links Academy St Albans The Links Academy serves the needs of primary and secondary schools and their students in the St Albans and Harpenden districts of Hertfordshire. We do this by offering an alternative to mainstream school for 11-16 year olds at our onsite academy for secondary aged students. For primary aged pupils they are supported by our Primary Support Base Team. The Outreach Team who work with staff and students in both primary and secondary school settings. We aim to provide a structured high quality and personalised education for students with complex, social and emotional needs in partnership with: local schools, parents, carers, other agencies and the local community. At the Links students will leave: Knowing their strengths, needs, achievement and attainment Recognising positive and respectful relationships Equipped with the qualities that they will need for successful new futures Having experienced and be able to access exciting opportunities We usually inspect good schools every 4 years or at any time if we have concerns. We normally give one working day's notice before an inspection but can also inspect schools without notice. Links Academy is a Mixed school with pupils aged from 11 to 16 The age range that the establishment is legally allowed to make provision for. The number of pupil places the establishment can accommodate. This field is not editable by establishment users as it is populated by the DfE using the underlying data from the schools, pupils and their characteristics statistical release published each summer. The figures used are the performance table figures which ensures GIAS and the Find and Compare Schools in England service are consistent. This information is compiled from the data returned by establishments for their establishment's situation on the third Thursday in January, in the spring school census data collection return. This field shows whether a pupil's family have claimed eligibility for free school meals as reported in the annual spring school census. Pupils or their parents are able to claim free school meals if they receive a qualifying benefit. This field does not show pupils who actually received free school meals but the number of those who are eligible to receive them. This field is not editable by establishment users as it is populated by the DfE using the underlying data from the schools, pupils and their characteristics statistical release published each summer. The figures used are the performance table figures which ensures GIAS and the Find and Compare Schools in England service are consistent. This information is compiled from the data returned by establishments for their establishment's situation on the third Thursday in January, in the spring school census data collection return. This field shows whether a pupil's family have claimed eligibility for free school meals as reported in the annual spring school census. Pupils or their parents are able to claim free school meals if they receive a qualifying benefit. This field does not show pupils who actually received free school meals but the percentage of those who are eligible to receive them. The data presented for the middle super output area (MSOA) is representative of the 2021 census. The data presented for the lower super output area (LSOA) is representative of the 2021 census. Academic Progress: Most pupils make rapid progress in re-engaging with learning Behaviour and Attitudes: Pupils behaviour in lessons and around the school is usually good; occasionally it is outstanding Qualifications and Training: Teachers use their good subject knowledge and effective questioning to enable pupils to learn well. Current Educational Practices: Leaders provide good support and training where relative weaknesses in practice are identified. Strengths and Challenges: Occasionally, less experienced teachers do not manage incidents of disruption in lessons well enough. Opportunities for Involvement: Leaders and governors engage effectively with parents to support the learning and well-being of all pupils. Communication: Close engagement with parents and carers ensures that pupils are safe. Handling Conflicts and Concerns: Governors effectively oversee the arrangements for managing the performance of all staff, including the headteacher. Actions for Quality Improvement: Leaders are taking effective action to secure and sustain good teaching, learning and assessment across the school. Managing Bullying and Safety: There is a strong culture of safeguarding throughout the school. Promoting Welfare and Safety: Staff work closely with parents and outside agencies when they identify any pupils who are vulnerable. Extracurricular Offerings: The curriculum is well designed and highly personalised with appropriate opportunities for enrichment. Balancing Academics and Extracurriculars: Leaders provide good additional support for disadvantaged pupils. Career Counselling Services: Pupils receive good-quality independent careers guidance. Managing and Supporting SEND: Teaching assistants provide good additional support for pupils with special educational needs and/or disabilities. Subjects Offered: Pupils have good opportunities to take GCSE examination courses in English, mathematics, and other subjects.

What is link learning. What is link practice. Links academy photos. Link academy contact. What makes it a links course. Links vs course. Links academy rochester ny.