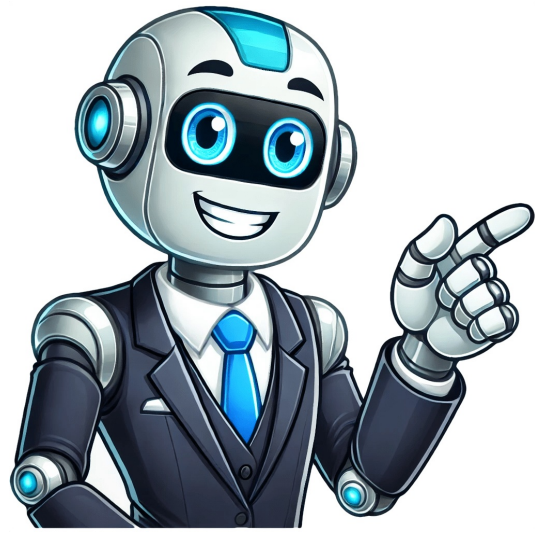


[Click Here](#)



Annesbrook (Annesbrook) is a section of another place (Tahunanui) in the region of Nelson Region in New Zealand with a population of approximately 100 people. Find all facts and information about Annesbrook Annesbrook is located in the region of Nelson Region. As the crow flies, the distance to the regional capital of Nelson Region, Nelson (Nelson), is approximately 4.8 km (3.0 mi). The distance from Annesbrook to the capital of New Zealand, Wellington (Wellington), is approximately 128.1 km (79.6 mi) as the crow flies. Perhaps also of interest: Distances from Annesbrook to the largest cities and places in New Zealand. AnnesbrookSuburbCoordinates: 411800S 1731410E / 41.30000S 173.23611E / -41.30000; 173.23611CountryNew ZealandRegionNelsonWardStoke-Thunanui General WardWhakat Mori WardElectoratesNelsonTe Tai Tonga (Mori)GovernmentTerritorial AuthorityNelson City CouncilNelson City MayorNick SmithNelson MPRachel BoyackTe Tai Tonga MPTkuta FerrisArea[1]Total2.96km2 (1.14sqmi)Land2.96km2 (1.14sqmi)Water0km2 (0sqmi)Population(June 2023)[2]Total100Density34/km2 (87/sqmi)Time zoneUTC+12 (NZST)Summer (DST)UTC+13 (NZDT)Postcode7011Area code03Annesbrook is an industrial suburb of Nelson and lies between Nelson Airport and State Highway 6. There is no public transport within the suburb. "Statistical Area 2 2018 (generalised) GIS" (Data table). stats.govt.nz. Statistics New Zealand. "Population estimate tables - NZ.Stat". Statistics New Zealand. Retrieved 25 October 2023. This short article about aplace or feature can be made longer. You can help Wikipedia by adding to it.Retrieved from "Explore Annesbrook, Annesbrook, in the Nelson City, Nelson. This includes the postal code, map coordinates (latitude and longitude), travel guide, weather, police station, college, schools, airport, railway station, business, cinema, nearby street addresses and nearby locations of interest. Annesbrook which come under Nelson region. its Geo coordinates are -41.2833, 173.2833 1124 people live in Annesbrook, Nelson. NZAnnesbrook is a residential suburb of Nelson, New Zealand, located 6 km from the city center. It is known for its peaceful atmosphere, scenic views, and well-maintained homes. The suburb has a variety of amenities, including a golf course, a bowling club, and a community center. It is also home to several schools, including Nelson College and St. Mary's School.Annesbrook, Nelson City, New Zealand-41.3004752,173.2425826 (latitude/longitude)The distance from Annesbrook, Nelson, Nelson City to NZ Top 10 CitiesTop 10 NZ CitiesDistance (km)Nelson, NSN0.27 kmWellington, WGN128.06 kmPalmerston North, MWT225.48 kmChristchurch, CAN253.37 kmNew Plymouth, TKI259.74 kmHamilton, WKO428.38 kmRotorua, BOP436.20 kmTauranga, BOP474.19 kmAuckland, AKL512.70 kmDunedin, OTA555.38 kmThis page updated at Saturday, June 28, 2025 11:03:11 PM - Australia - New Zealand - HiHB.com A small donation If you're finding the NZ Topo Map service useful please consider donating, no matter how small, it's greatly appreciated. Why donate? NZ Topo Map is developed and maintained in my spare time. Your donation will help cover the ongoing hosting and bandwidth costs required to keep this free service up and running. Donations also show your love and encourage me to development new functionality. Thank you! Cryptocurrency is also welcome. The following important information is taken directly from the maps legend: Representation on this map of a road or track does not necessarily indicate public right of access. Closed tracks or routes on this map are defined as being no longer maintained or passable and should not be used by recreationalists. The Department of Conservation or other authorities should be contacted for the latest information on tracks and huts. Not all aerial wires, cableways and obstructions that could be hazardous to aircraft are shown on this map. Contours and spot elevations in forest and snow areas may be less accurate. Disclaimer All information and materials available at this web site are provided "as is" without any warranties of any kind, either express or implied, and NZ Topo Map disclaims all warranties of any kind, either express or implied, including warranties of merchantability, fitness for a particular purpose, non-infringement of intellectual property or arising from a course of dealing, usage or trade practice. NZ Topo Map reserves the right to remove any information from the web site at any time. In no event shall NZ Topo Map be liable for any damages whatsoever (including, without limitation, indirect, special, consequential or incidental damages or those resulting from lost profits, lost data or business interruption) arising out of the use, inability to use, or the results of use of this web site, any web sites linked to this web site, or the materials or information contained at any or all such web sites, whether based on warranty, contract, tort or any other legal theory and whether or not advised of the possibility of such damages. If your use of the materials or information on this web site results in the need for servicing, repair or correction of equipment or data, you assume all costs thereof. NZ Topo Map strives to provide you with useful, accurate, and timely information on this web site. Accordingly, NZ Topo Map has attempted to provide accurate information and materials on this web site but assumes no responsibility for the accuracy and completeness of that information or materials. NZ Topo Map makes no commitment to update the information or materials on this web site which, as a result, may be out of date. Privacy Policy You can use the site without disclosing any personal information. You may choose to disclose personal information to NZ Topo Map when you give feedback or in submission forms. If you provide personal information, it's held by NZ Topo Map. Email addresses are not made available to the public. Unless required by law, NZ Topo Map won't publicise the names or email addresses of individuals who provide feedback or who use submission forms without their consent. NZ Topo Map will only use personal information provided for the purpose of: administering, evaluating and improving the site improving our services, and communicating with you, including responding to your feedback and information provided in submission forms. NZ Topo Map may collect statistical information about your visit to help improve the site. This information is aggregated and doesn't identify you personally. It includes: your IP address the search terms you used the pages you visited on our site and the links you clicked on the date and time you visited the site referring site (if any) from which you clicked through to this site your operating system, for example Windows 10, Mac OS X the type of web browser you use, such as Chrome, Edge or Safari other things like your screen resolution and the language setting of your browser. This site generates persistent session cookies (that is, they have an expiry date and are removed on that date) for the purpose of monitoring site usage. The cookies don't collect personal information. You can disable them or clear them out of your web browser without affecting your ability to use the site. Check out this video for a full explanation of our 2025 vision, OUR FAITH. We hope it encourages you as you continue on the journey of following Jesus Suburb of Nelson, New ZealandSuburb in Nelson, New ZealandAnnesbrookSuburbCoordinates: 411800S 1731410E / 41.30000S 173.23611E / -41.30000; 173.23611CountryNew ZealandRegionNelsonWardStoke-Thunanui General WardWhakat Mori WardElectoratesNelsonTe Tai Tonga (Mori)GovernmentTerritorial AuthorityNelson City CouncilNelson City MayorNick SmithNelson MPRachel BoyackTe Tai Tonga MPTkuta FerrisArea[1]Total2.96km2 (1.14sqmi)Land2.96km2 (1.14sqmi)Water0km2 (0sqmi)Population(June 2024)[2]Total90Density30/km2 (79/sqmi)Time zoneUTC+12 (NZST)Summer (DST)UTC+13 (NZDT)Postcode7011Area code03Annesbrook is an industrial suburb of Nelson, New Zealand.It lies between State Highway6 and Nelson Airport to the southwest of Nelson city centre and north of Stoke.[3]The Nelson Classic Car Museum (which was previously the World of WearableArt & Classic Cars Museum) is located in Annesbrook.[4][5]The corresponding statistical area of Nelson Airport covers an area of 2.96 km2.[1]The estimated population of the area reached 80 in 1996.[6]It reached 90 in 2001, 96 in 2006, 105 in 2013, and 96 in 2018.[6]Annesbrook lost its post office when 580 others closed, or were reduced, on 5 February 1988.[7]The statistical area of Nelson Airport had an estimated population of 90 as of June 2024,[2] with a population density of 30 people per km2.Historical populationYearPop.% p.a.2006962013105+1.29%2018961.78%Source: [8]Nelson Airport had a population of 96 at the 2018 New Zealand census, a decrease of 9 people (8.6%) since the 2013 census, and unchanged since the 2006 census. There were 33 households, comprising 57 males and 39 females, giving a sex ratio of 1.46 males per female. The median age was 36.4 years (compared with 37.4 years nationally), with 15 people (15.6%) aged under 15 years, 24 (25.0%) aged 15 to 29, 51 (53.1%) aged 30 to 64, and 9 (9.4%) aged 65 or older.Ethnicities were 75.0% European/Pkeh, 9.4% Mori, 12.3% Pasifika, 6.2%, Asian, and 6.2% other ethnicities. People may identify with more than one ethnicity.The percentage of people born overseas was 18.8, compared with 27.1% nationally.Although some people chose not to answer the census's question about religious affiliation, 50.0% had no religion, 31.2% were Christian, 3.1% had Mori religious beliefs, 3.1% were Hindu and 3.1% had other religions.Of those at least 15 years old, 6 (7.4%) people had a bachelor's or higher degree, and 15 (18.5%) people had no formal qualifications. The median income was \$32,300, compared with \$31,800 nationally. 3 people (3.7%) earned over \$70,000 compared to 17.2% nationally. The employment status of those at least 15 was that 51 (63.0%) people were employed full-time, and 6 (7.4%) were part-time.[8]In 2018, 21.1% worked in manufacturing, 5.3% worked in construction, 21.1% worked in hospitality, 5.3% worked in transport, and 5.3% worked in education.[6]As of 2018, among those who commuted to work, 63.2% drove a car, 5.3% rode in a car, 15.8% used a bike, and 15.8% walk or run.[6]No one used public transport.[6]^ a b "Statistical Area 2 2018 (generalised) GIS" (Data table). stats.govt.nz. Statistics New Zealand.^ a b "Aotearoa Data Explorer". Statistics New Zealand. Retrieved 26 October 2024.^ Wise's Nelson-Blenheim "Easyread" Map ISBN1 877402 50 8^ "Nelson Classic Car Museum". Retrieved 1 August 2021.^ Newman, Tim (28 August 2020). "Nelson's Classic Car museum back up and running". Stuff. Retrieved 14 April 2023.^ a b c d e "Place Summary Nelson Airport". Stats NZ. Statistics New Zealand.^ "List of P.O. closings and modifications. Press". paperspast.natlib.govt.nz. 16 October 1987. Retrieved 13 October 2024.^ a b "Statistical area 1 dataset for 2018 Census". Statistics New Zealand. March 2020. Nelson Airport (304000). 2018 Census place summary: Nelson Airport 411800S 1731410E / 41.30000S 173.23611E / -41.30000; 173.23611Retrieved from "Annesbrook, you'll enjoy a convenient lifestyle with everything you need close at hand. Located between State Highway 6 and Nelson Airport, access to major routes is easy. The suburb features great local amenities, including restaurants, cafes, and parks perfect for family outings. Community life thrives, with the Annesbrook Event Centre hosting various gatherings and cultural activities. Plus, vibrant community programs support residents of all ages. With a serene environment and ongoing development, Annesbrook fosters a welcoming atmosphere. Stick around to discover more about the unique features that make this suburb a fantastic place to call home.Major HighlightsAnnesbrook offers easy access to major routes, including State Highway 6 and proximity to Nelson Airport for convenient travel.Limited but efficient public transport options, with buses running every 30 minutes and wheelchair accessibility, enhance commuting in the area.The suburb features various local amenities, including restaurants, cafes, and shopping services at Nelson Junction, catering to diverse needs.Community engagement is strong, with facilities like Annesbrook Church and the Greenmeadows Community Centre hosting programs for all age groups.Family-friendly parks and recreational spaces promote outdoor activities, supported by a mild climate year-round for a vibrant lifestyle.Location and AccessibilityAnnesbrook is conveniently located between State Highway 6 and Nelson Airport, making it easily accessible for residents and visitors alike.This prime location not only highlights Annesbrook's history as a growing suburb but also showcases its ongoing development.Nestled southwest of Nelson city center and north of Stoke, Annesbrook offers a serene environment with a population density of just 34 people per square kilometer.While public transport options are limited, most residents prefer driving, taking advantage of the nearby highway and airport for quick commutes.With a total area of 2.96 km, Annesbrook combines convenience and charm, making it an attractive place to call home.The suburb's growth reflects its appeal and accessibility in the region.Community and Church LifeNestled within a vibrant community, Annesbrook offers a rich tapestry of social and religious life that enhances the suburban experience.You'll find the Annesbrook Church serving as a hub for community engagement, hosting various cultural activities and music performances. With modern technology and versatile spaces, it's perfect for both intimate gatherings and larger events.Nearby community centers, like the Greenmeadows Community Centre, provide additional resources and programs that foster connections among residents.While there's a recognized need for more arts spaces in Nelson, the existing facilities at Annesbrook present an opportunity to expand community-driven cultural initiatives. Embracing these venues can truly enrich your experience in this welcoming suburb.Event Centre FeaturesThe Annesbrook Event Centre stands out with its impressive features, making it an ideal venue for a variety of gatherings.With a capacity of up to 550 guests in auditorium style and 350 for banquets, it accommodates events of all sizes.You'll appreciate the five additional breakout spaces, which offer flexible layouts tailored to your specific needs.High-speed WiFi and a state-of-the-art PA system enhance your experience, while on-site catering provides delicious menu options to satisfy your guests.The venue also boasts 195 on-site parking spaces, ensuring easy access for everyone.Customizable packages and event planning assistance from the dedicated team guarantee a smooth execution, making your event memorable and hassle-free.Tourism HighlightsNelson offers a wealth of tourism highlights that cater to every type of traveler.You'll find a mix of natural beauty and engaging activities, making it a perfect destination for eco tourism and relaxation.Here are some must-see tourist attractions:Abel Tasman National Park: Explore golden beaches and crystal-clear waters through hiking or kayaking.Tahunanui Beach: Enjoy swimming and standup paddleboarding in its calm waters.Maitai River Walkway: Stroll along this scenic 7.2km path with swimming holes like Black Hole.Queens Gardens: Relax in beautifully landscaped gardens, home to the Suter Art Gallery and Caf.With such diverse options, you're sure to create unforgettable memories in Nelson!Local Amenities OverviewIn Annesbrook, you'll find a great mix of nearby restaurants and cafes that cater to all tastes.Shopping and services are easily accessible, with Nelson Junction offering a range of retail options.Plus, the local parks and recreational areas, like Annesbrook Youth Park, provide the perfect setting for outdoor activities and relaxation.Nearby Restaurants and CafesAnnesbrook boasts a variety of dining options that cater to every taste and occasion.Whether you're after a cozy brunch or a lively evening out, you'll find something to delight your palate.Here are some local favorites:Little Engine Eatery: Enjoy breakfast and brunch in a retro vibe, with vegan options and outdoor seating.Little Nettle: Grab specialty coffee and light bites in a cute, dog-friendly atmosphere.Speights Ale House Nelson: Indulge in gourmet burgers and craft beers while catching live sports.T.O.A.D Hall Store & Cafe: A highly-rated spot for a casual meal and community events.With rave cafe reviews and a focus on local ingredients, these dining experiences make Annesbrook a true culinary gem.Shopping and Services AccessShopping and services in Annesbrook offer residents convenient access to essential amenities, making daily life easier.You'll find ReUse Shops at 6 Vivian Place, a treasure trove of secondhand items like clothing, electronics, and homewares, reflecting current shopping trends.For daily essentials, On the Spot Black Cat Dairy serves hot meals and groceries, plus NZ Post and Lotto servicesall open seven days a week.Outpost Supplies at 53 Quarantine Road caters to outdoor needs with specialized goods.The community-focused ReUse Shops also support charitable programs like Kai Rescue, showcasing service innovations that promote sustainability.Parks and Recreational AreasWhile enjoying the vibrant community life in Nelson's Annesbrook suburb, you'll find that parks and recreational areas play a crucial role in enhancing your daily experience.The Annesbrook Youth Park, spanning 1.3 acres, offers a serene environment perfect for a range of activities. Here are some highlights:Leisure Playground: A great spot for kids of all ages.Basketball Court: Ideal for outdoor sports and friendly matches.Well-Maintained Paths: Perfect for walking, running, or biking along nature trails.Local Wildlife: Enjoy encounters with native birds like tui and kereru.These amenities encourage outdoor play and community engagement, making your time in Annesbrook both enjoyable and fulfilling.Demographics and LifestyleIn a vibrant community like Annesbrook, you'll find a diverse demographic that shapes its unique lifestyle. With a population of 90 and a median age of 36.4 years, the area reflects a mix of ages and ethnicities, predominantly European/Pkeh.Population trends show slight fluctuations over the years, but the community remains stable. You'll see various lifestyle choices influenced by this diversity: most residents commute by car while others prefer biking or walking.Employment is concentrated in manufacturing and hospitality, with a median income of \$32,300. Community involvement thrives, particularly through local church initiatives, creating a supportive environment.Infrastructure and ServicesWhen you think about living in Annesbrook, the infrastructure and services available make a big difference in your everyday life.With convenient transport options, community programs, and event centre facilities, you've got everything you need right at your fingertips.Let's explore how these elements enhance your experience in the suburb.Event Centre Facilities OverviewAnnesbrook's event centre boasts impressive facilities designed to accommodate a variety of gatherings, from corporate functions to weddings.Whether you're in charge of event planning or looking for venue options, this centre has you covered.Here's what you can expect:Auditorium: Up to 550 guests theatre-style or 350 banquet-style.Breakout Spaces: Five versatile areas, including classrooms and halls.Audiovisual: State-of-the-art equipment, including a complete PA system and high-speed WiFi.Accessibility: 195 parking spaces, including disabled parking, for easy access.With tailored event packages and professional support, you'll ensure a smooth and successful event at Annesbrook's event centre.Community Programs AvailabilityThe availability of community programs in Annesbrook enhances the overall quality of life for residents.While direct community support services aren't located in Annesbrook, nearby organizations like Nelson Community Services offer vital resources, including housing support and youth programs.On Wednesdays, you can join the vibrant Annesbrook Youth program at the Saxton Location, where high-school-aged children engage in fun activities and explore their potential under the guidance of Youth Pastor Ruby Dorling. Free transport makes participation easy.Additionally, Annesbrook Church provides various community activities tailored for all ages, ensuring everyone has access to enriching experiences.Though some services may have waitlists, the commitment to supporting the community remains strong.Transport and Accessibility OptionsTransport options in Annesbrook are robust and efficient, ensuring residents can easily access essential services and amenities.You'll find multiple public transport routes and reliable accessibility features that cater to your commuting needs.Regular Services: Buses operate every 30 minutes on key routes, including Richmond to Nelson.Late Night Options: The Late Late Bus runs hourly from the city center to Richmond on weekends.Wheelchair Access: Most buses accommodate wheelchairs and pushchairs, enhancing accessibility for everyone.Ongoing Improvements: Infrastructure upgrades are continuously made to optimize service and reduce maintenance needs.With these options, getting around Annesbrook and connecting to neighboring areas is straightforward and convenient.Family-Friendly EnvironmentWhen you think of a family-friendly environment, Annesbrook stands out with its inviting parks and recreational spaces that cater to all ages. You'll find areas that promote family activities and ensure park safety, making it a perfect spot for your loved ones.Park NameFeaturesAccessibilityAnnesbrook Youth ParkBasketball court, leisure playgroundWell-maintained pathsWigzell ParkEquipped playgrounds, scenic trailsClose to local schoolsMurphy North ReserveClimbing structure, shaded picnic spotsFenced for safetyThese parks offer an array of engaging activities, ensuring memorable outings for everyone in your family. Enjoy the mild climate year-round while exploring all Annesbrook has to offer!Community Events and ActivitiesLiving in Annesbrook means being part of a vibrant community that thrives on events and activities throughout the year.You'll enjoy various opportunities for community engagement, whether it's through local markets, festivals, or cultural events.Here are some highlights:Nelson Downtown Local Market A weekly gathering from June to September.Nelson Art Walk Showcasing local talent and creativity during the same months.Community workshops Held at venues like Room TWENTY5, promoting skill-sharing and learning.Sports events From hockey games to ski competitions, there's always something happening.With such diverse event planning, you'll find plenty of ways to connect, celebrate, and enjoy life in Annesbrook!Frequently Asked QuestionsWhat Public Transportation Options Are Available in Annesbrook?In Annesbrook, you'll find numerous bus routes with reliable transport schedules. Buses run frequently throughout the day and into the night, connecting you to Richmond, Stoke, Tahuna, and the Nelson City Centre.Are There Any Local Schools or Educational Facilities Nearby?If you're looking for Annesbrook schools and educational facilities, you'll find several nearby. Options include Hampden Street School, Victory Primary School, and Nelson Intermediate, all catering to various age groups and educational needs.What Types of Community Programs Are Offered for Adults?You'll find various community programs for adults, including engaging community workshops and fitness classes tailored to different interests. These activities promote social connections and enhance overall well-being, ensuring you stay active and involved.Is There Parking Available at the Annesbrook Event Centre?Yes, there're ample parking facilities at the event centre, offering 195 spaces, including disabled spots. This ensures excellent event accessibility, making it easy for you and your guests to attend large gatherings without hassle.How Can I Get Involved With Annesbrook Church Activities?Imagine vibrant gatherings filled with laughter and energy. You can dive into community service, volunteer for youth programs, or connect through events. Join the church's welcoming atmosphere and discover how you can contribute and grow.ConclusionIn Annesbrook, you'll find the perfect blend of convenience and community. With its accessible location and family-friendly vibe, it's like a modern-day Mayberry, where neighbors look out for each other. The local amenities, vibrant events, and strong community ties make it easy to feel right at home. So, whether you're raising a family or enjoying your golden years, Annesbrook offers everything you need for a fulfilling lifestyle. Don't miss out on this charming suburb!

Formula de costo unitario. Formula de costo total unitario. Formula cost total unitari. Costo unitario formula. Costo total unitario. Formula para calcular el costo total unitario. Formula para calcular costo total unitario. Total play costo. Costo total unitario fórmula. Costo total formula. Costo total fórmula. Formula del costo total unitario.