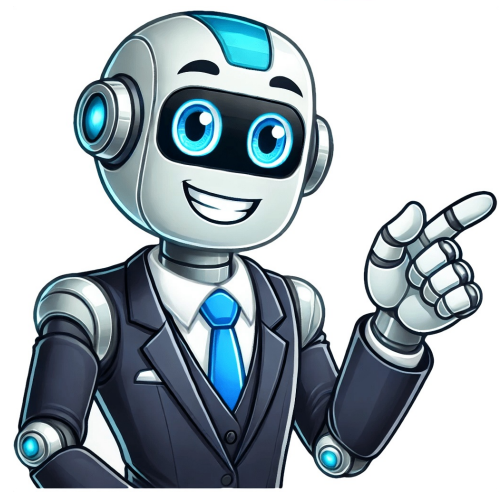


I'm not a bot



HAMPTON BAY Ceiling Fan Remote Control 99432 Manual To avoid possible electrical shock, turn the electricity off at the main fuse box before wiring. If you feel you do not have enough electrical wiring experience, contact a licensed electrician. Incorrect wire connections will damage this receiver. To reduce the risk of fire or injury, do not use this product in conjunction with any variable (rheostat) wall control. NOTE: The battery will weaken with age and should be replaced before leaking takes place as this will damage the hand unit. Dispose of the used battery properly, keep the battery out of the reach of children. YOU MUST SET CEILING FAN TO HIGH SPEED AND LIGHT KIT (IF ANY) TO ON POSITION BEFORE OPERATING REMOTE CONTROL. The supply to the remote control receiver should be connected through a mains switch, i.e. existing wall switch. Disconnect from power supply at wall switch before working on remote control receiver or ceiling fan. Install receiver into the ceiling fan canopy of the fan to ensure proper protection. This unit is to be used for the control of ceiling fan and in a AC110/120V 60Hz power supply only. Do not install in damp locations or immerse in water. (For indoor use only.) Do not pull on or cut leads shorter. Do not drop or bump the unit. Do not mix old and new batteries. Do not mix alkaline, standard (carbon-zinc), or rechargeable (ni-cad, ni-mh, etc.) batteries. Warranty The supplier warrants the remote control and receiver to be free from defects in workmanship and material present at time of shipment from the factory for a period of one year after the date of purchase by the original purchaser. To obtain warranty service, you must present a copy of the receipt as proof of purchase. All costs of removing and reinstalling the product are your responsibility. Contact the Customer Service Team at 1-855-HD HAMPTON or visit www.HAMPTONBAY.COM Pre-Installation PACKAGE CONTENTS Part Description Quantity A Remote control 1 B Receiver 1 C AAA 1.5V battery 2 D Plastic wire connector 5 E White painting screw 1 F Rubber isolated pad 2 This product and/or components are governed by one or more of the following U.S. Patents: 5,947,436; 5,988,580; 6,010,110; 6,046,416, 6,210,117 and other patents pending. Installation Setting the codes on the remote control and receiver NOTE: The frequencies on your receiver and hand unit have been preset at the factory. Before installing the receiver, make sure the dip switches on the receiver and hand unit are set to the same frequency. The dip switches on the hand unit are located inside the battery compartment. NOTE: The battery will weaken with age and should be replaced before leaking takes place as this will damage the hand unit. Dispose of the used battery properly, keep the battery out of the reach of children. NOTE: It is imperative that the code used for both transmitter and receiver is exactly the same, otherwise remote controller will not work. Setting the Code on the Remote Remove the battery cover on the back of the remote control by pressing firmly on the arrow and sliding the cover off. Slide the code switches to your choice of either up or down. The factory setting is up. For fans with dimmable bulbs, slide the "Light Function" switch (O/D) to the position marked "D". If you are using non dimmable bulbs slide the "Light Function" switch to the "O" position. Install two 1.5V AAA batteries (included). Replace the battery cover on the remote control. Setting the Code on the Receiver Slide the code switches on the receiver to the same positions as set on the remote control. Installing the rubber isolated pads Loosen the two screws provided with the outlet box; insert two rubber isolated pads (F) between the mounting bracket and the outlet box; firmly tightened the two screws. Installing the receiver To reduce the risk of fire or electric shock, remember to disconnect power. The electrical wiring must meet all local and national electrical code requirements. The electrical source and fan must be 110/120 volt, 60Hz. Do not use this product in conjunction with any variable wall control. Incorrect wire connection can damage this receiver. If fan or house wires are a different color, have this unit installed by a licensed electrician. Do not install in a damp location or immerse in water (For indoor use only). Do not pull on or cut leads shorter. Do not drop or bump the unit. NOTE: The ceiling fan must be set at HIGH speed and light kit (if installed) should be set to the ON position. NOTE: For better performance with the WINK system, the T-Shaped antenna stick should be mounted to the ceiling outside of the fan's ceiling canopy using the pre-mounted doublestick tape and wood screw (included). Position the house supply wires (AAA) to one side of the slide-on mounting bracket; position the fan wires (BBB) to the opposite side. Insert the narrow end of the receiver (as shown, flat side towards the ceiling) into the slide-on mounting bracket until it rests on top of the ball/downrod assembly. The canopy comes up to cover the receiver and bracket. Wiring the receiver to the household wiring To avoid possible electrical shock, turn the electricity off at the main fuse box before wiring. If you feel you do not have enough electrical wiring knowledge or experience, contact a licensed electrician. Each wire not supplied with this fan is designed to accept up to one 12-gauge house wire and two wires from the fan. If you have larger than 12-gauge house wiring or more than one house wire to connect to the fan wiring, consult an electrician for the proper size wire nuts to use. Use the wire connecting nuts (AA) supplied with your fan. Secure the connectors with electrical tape and ensure there are no loose strands or connections. Spread the wires apart so that the green and white wires are on one side of the outlet box and the black wire is on the other side. Connect the green fan wires to the household ground wire (this may be a green or bare wire) using a wire connecting nut (AA). Connect the receiver black (or red) wire to the household black (hot) wire using a wire connecting nut (AA). Connect the receiver white wire to the household white wire (neutral) wire using a wire connecting nut (AA). Secure each wire connecting nut using electrical tape. Wiring the fan to the receiver Use the wire connecting nuts (AA) supplied with your fan. Secure the connectors with electrical tape and ensure there are no loose strands or connections. Connect the fan motor white wire to the receiver white wire using a wire connecting nut (AA). Connect the fan motor black wire to the receiver black wire using a wire connecting nut (AA). Connect the fan motor blue wire to the receiver blue wire using a wire connecting nut (AA). Secure each wire connecting nut using electrical tape. Turn the wire connecting nut (AA) upward and push the wiring into the outlet box (MM). Operating Your Remote Control Operating the remote control - Press and release the button to turn the fan on or off. Press and hold the button for 3 seconds to use the "walk away time delay"; this will activate the light for 30 seconds (if you are using dimmable bulbs the light will be activated at 50% brightness. - Fan Speed - LED's on the fan speed button will illuminate to the corresponding speed. - Press button once - turns the fan on high speed. - Press button twice - turns the fan on medium-high speed. - Press button three times - turns the fan on medium-low speed. - Press button four times - turns the fan on low speed. Press button five times - fan will turn off. - Light ON/OFF Press and release the button to turn the light on or off. If you are using dimmable bulbs and you have previously set the dip switch in your remote control to the "D" position, press and hold the button to activate the dimmer function. - Comfort Breeze - Press and release the button to enable Comfort Breeze TM; this will change your fan speed randomly, simulating a relaxing breeze. To cancel this feature press or - Timer - While the fan is on press button once - turns on a 2 hour run timer. - While the fan is on press button twice - turns on a 4 hour run timer. - While the fan is on press button three times - turns on a 8 hour run timer. Operating Fan with the WINK App Downloading the WINK Application Using your smart device, navigate to the application store (Apple App Store or Google Play). Download the free WINK app and create an account. Connecting to the WINK Hub Ensure your WINK Hub is connected to WiFi by confirming the indicator light is a solid blue color. With the app open, select "add a product." Choose the WINK Hub and follow the instructions on the app to add your fan. NOTE: Be sure your WINK Hub is plugged in and within range of your fan. Refer to Wink HUB user manual for the range. Pairing the Fan to the WINK Hub When instructed, turn on your fan. Once pairing is successful, the fan will turn on at low speed and the light will blink 5 times. NOTE: If using a dimmer with these lights, set dimmer at highest setting for best results. NOTE: Reset your fan if the pairing is taking longer than expected. Turn off your fan for 3 seconds, then turn it back on for 3 seconds. Repeat these steps 5 times. The light will blink 3 times when factory reset is successful. If the pairing failed, please reset the device to original setting and re-start the pairing. Fan Light Settings During set up, the customer is asked if the fan has a light kit. If your fan has a light, select "Fan Light On." If your fan does not have a light, select "Fan Light Off." Press SAVE to confirm. Operating Your Remote Control Fan Speed OFF - Turns fan off 1- Turns the fan to Low speed. 2- Turns the fan to Medium speed. 3- Turns the fan to Medium 2 speed. 4- Turns the fan to High speed. BREEZE- Randomly alternates fan speeds to create an organic breeze effect. Fan Light OFF/ON - Turns fan light off or on. Select and slide to dim or brighter light. Timer When on "fan control screen," press settings button in upper right corner to display the settings panel. Select fan to display control panel. Scroll down the control panel and select "Set Timer." Scroll through the hours and minute columns to select the duration of the timer. Press OK to start the timer. This equipment has been tested and found to comply with the limits for a Class B digital device, pursuant to Part 15 of the FCC Rules. Any changes or modifications not expressly approved by the grantee of this device could void the user's authority to operate the equipment. FCC ID: KUJCE10406, KUJCE10407 This device complies with Part 15 of the FCC Rules. Operation is subject to the following two conditions: This device may not cause harmful interference, and this device must accept any interference received, including interference that may cause undesired operation. Documents / ResourcesReferences The Home Depot Logo App Store - Apple Google PlayDownload manualHere you can download full pdf version of manual, it may contain additional safety instructions, warranty information, FCC rules, etc.Download HAMPTON BAY Ceiling Fan Remote Control 99432 Manual How to Program a Hampton Bay Fan Remote?To program a Hampton Bay fan remote, follow these steps:1.Turn off the fan and disconnect it from the power source.2.Location the dip switches on both the remote and the fan receiver.3.Set the dip switches on the fan receiver to match the dip switches on the remote by sliding them to the same position.4.Reconnect the fan to the power source and turn it on.5.Test the remote by pressing the buttons and see if the fan responds.6.Adjust the dip switches as needed if the fan does not respond.6 Key Points:Turn off and disconnect the fan from power sourceLocate dip switches on remote and fan receiverSet dip switches on receiver to match remoteReconnect fan and turn it onTest remote by pressing buttons and check for responseAdjust dip switches if fan does not respondDid You Know?1. Did you know that Hampton Bay fan remotes use a specific type of infrared technology to communicate with the fan? This technology is known as IR or infrared remote control, and it allows for wireless communication between the remote control and the fan.2. One interesting feature of Hampton Bay fan remotes is the ability to program multiple fans to a single remote. This means that with just one remote control, you can control the settings and operations of several Hampton Bay fans in your home or office.3. Hampton Bay fan remotes often come with a built-in timer function, allowing you to set the fan to automatically turn on or off at specific times. This can be especially useful for energy-saving purposes or for creating a comfortable environment without having to manually control the fan.4. Some Hampton Bay fan remotes also offer a feature called "Reverse" mode. This allows you to change the direction of the fan blades, either clockwise or counter-clockwise. This feature comes in handy during different seasons as it helps to evenly distribute the air and maintain a comfortable temperature in your space.5. In addition to controlling the fan speed and direction, Hampton Bay fan remotes also have the capability to control the built-in lighting features of certain Hampton Bay ceiling fans. This allows you to adjust the brightness or even turn the lights on or off using the same remote control that operates the fan.Related Post: How to Open LED Light Remote: A StepByStep GuideMany Hampton Bay fan owners have experienced the frustration of a noisy fan interrupting their peace and tranquility. Fortunately, there are several steps you can take to address this issue.Tightening Screws And ConnectionsThe first step in addressing a noisy Hampton Bay fan is to ensure that all screws and connections are tightened properly. Check the motor housing screws, screws attaching the fan blade bracket to the motor hub, and screws securing the glassware of the light fixture. If any of these are loose, use a screwdriver to securely tighten them. By doing so, you can eliminate any vibrations that may be causing the noise.Checking Light Bulbs And Power ConnectionsSometimes, the noise from a Hampton Bay fan can be attributed to:Loose light bulbsFaulty power connectionsTo address these issues:1. Check to make sure that the light bulbs are screwed in securely.2. Turn off the power and inspect:Wire nut connectionsRubber pads between the mounting plate and outlet boxSecurity of the ceiling outlet boxEnsure that everything is properly aligned and tighten any loose connections.Remember to exercise caution and turn off the power before making any adjustments.Troubleshooting The Remote ReceiverIf the noise persists even after tightening screws and checking connections, the issue may lie with the remote receiver. To troubleshoot this, bypass the receiver and wire the fan directly to the switch. If the noise disappears, it indicates that the receiver may need to be replaced. Contact the manufacturer for further assistance or consider purchasing a replacement remote receiver. Identifying And Fixing Capacitor IssuesIn some cases, the noise may be coming from a faulty capacitor in the fan. The capacitor is responsible for regulating the fan's speed and if it becomes damaged or worn out, it can cause noise issues. To address this, identify the capacitor located in the fan motor. If it appears damaged (swollen, leaking, or discolored), consider replacing it with a new one. Related Post: How to Wire AC Disconnect: The Essential GuideConsult the fan's manual or contact the manufacturer for guidance on how to properly replace the capacitor. If you are unsure, it is recommended to consult a professional electrician. Consider Replacing The Remote ReceiverIf the noise persists after checking the capacitor, consider replacing the remote receiver. Sometimes, the remote receiver itself may be faulty. Purchase a replacement remote receiver from the manufacturer or a reputable third-party supplier. Ensure that the new remote is compatible with your Hampton Bay fan model. Related Post: How to Replace Ceiling Fan Capacitor: A Step-By-Step GuideIf the noise persists after all the above steps, it may be necessary to contact Hampton Bay's customer service for further assistance.3. Can I use a different brand's remote to program the Hampton Bay fan, or does it have to be the original remote that came with it?In most cases, it is likely necessary to use the original remote that came with the Hampton Bay fan to program it. Different fan brands often use different frequencies and programming protocols for their remotes, making them incompatible with each other. Therefore, using a different brand's remote may not be effective and could potentially not work at all with the Hampton Bay fan.To ensure proper programming and control, it is advisable to use the original remote or contact the manufacturer to inquire about any compatible alternatives or additional options for remote programming or replacement. They will have the expertise and knowledge to guide you in finding the appropriate remote for the specific Hampton Bay fan model. References: 1, 2, 3, 4 Home Depot sells their own brand of decorative ceiling fans under the Hampton Bay name. Some Hampton Bay fan models come with a convenient remote to turn on the fan and the light and adjust the speed. However, you will need to set up the remote to communicate with the ceiling fan. Fortunately, this is a fairly simple process that should only need to be done once. Operating the fan is also accomplished in a straightforward manner. In order for your remote to function properly, it needs to communicate with the fan itself via the same transmitter code combination. Setting the code is fairly straightforward. To begin, turn the remote over to the back and press firmly below the arrow on the battery cover. Slide the cover off and install a 9-volt battery into the compartment. Set each slide code switch near the battery into a position of your choice. Switches can be up or down, with up to 16 available combinations. Set the slide code switches in the receiver on the ceiling fan to the same exact positions that you have set on the remote control. Turn the ceiling fan light on and off and reset the ceiling fan speeds using the remote control to test the signal. If the fan doesn't respond to the remote control after you've set the slide code switches, double-check the slide code switch settings between the remote and the receiver to make sure they match exactly. Change the slide code switches on both the remote control and the ceiling fan receiver if the transmission signal interferes with a garage door opener or security system. Replace the battery cover on the back of the remote control when finished. Similarly, if you have more than one Hampton Bay ceiling fan in the same room, you will need to set each remote to transmit on a different channel so that it controls the correct fan. Use the high, medium and low buttons on the remote to adjust the Hampton Bay fan speed. You can use the light button to dim the light and the off button to turn off the fan. If the remote stops functioning normally, change the batteries before proceeding with additional troubleshooting. If the batteries were not low, you may need to check the transmitter code switches on both the remote and the fan. It's possible that they were knocked out of position and are no longer matching up. If neither of these solves the issues you are having with the ceiling fan remote, you may need to contact the manufacturer for help or purchase a replacement. Home Depot sells their own brand of decorative ceiling fans under the Hampton Bay name. Some Hampton Bay fan models come with a convenient remote to turn on the fan and the light and adjust the speed. However, you will need to set up the remote to communicate with the ceiling fan. Fortunately, this is a fairly simple process that should only need to be done once. Operating the fan is also accomplished in a straightforward manner. In order for your remote to function properly, it needs to communicate with the fan itself via the same transmitter code combination. Setting the code is fairly straightforward. To begin, turn the remote over to the back and press firmly below the arrow on the battery cover. Slide the cover off and install a 9-volt battery into the compartment. Set each slide code switch near the battery into a position of your choice. Switches can be up or down, with up to 16 available combinations. Set the slide code switches in the receiver on the ceiling fan to the same exact positions that you have set on the remote control. Turn the ceiling fan light on and off and reset the ceiling fan speeds using the remote control to test the signal. If the fan doesn't respond to the remote control after you've set the slide code switches, double-check the slide code switch settings between the remote and the receiver to make sure they match exactly. Change the slide code switches on both the remote control and the ceiling fan receiver if the transmission signal interferes with a garage door opener or security system. Replace the battery cover on the back of the remote control when finished. Similarly, if you have more than one Hampton Bay ceiling fan in the same room, you will need to set each remote to transmit on a different channel so that it controls the correct fan. Use the high, medium and low buttons on the remote to adjust the Hampton Bay fan speed. You can use the light button to dim the light and the off button to turn off the fan. If the remote stops functioning normally, change the batteries before proceeding with additional troubleshooting. If the batteries were not low, you may need to check the transmitter code switches on both the remote and the fan. It's possible that they were knocked out of position and are no longer matching up. If neither of these solves the issues you are having with the ceiling fan remote, you may need to contact the manufacturer for help or purchase a replacement. Home Depot sells their own brand of decorative ceiling fans under the Hampton Bay name. Some Hampton Bay fan models come with a convenient remote to turn on the fan and the light and adjust the speed. However, you will need to set up the remote to communicate with the ceiling fan. Fortunately, this is a fairly simple process that should only need to be done once. Operating the fan is also accomplished in a straightforward manner. In order for your remote to function properly, it needs to communicate with the fan itself via the same transmitter code combination. Setting the code is fairly straightforward. To begin, turn the remote over to the back and press firmly below the arrow on the battery cover. Slide the cover off and install a 9-volt battery into the compartment. Set each slide code switch near the battery into a position of your choice. Switches can be up or down, with up to 16 available combinations. Set the slide code switches in the receiver on the ceiling fan to the same exact positions that you have set on the remote control. Turn the ceiling fan light on and off and reset the ceiling fan speeds using the remote control to test the signal. If the fan doesn't respond to the remote control after you've set the slide code switches, double-check the slide code switch settings between the remote and the receiver to make sure they match exactly. Change the slide code switches on both the remote control and the ceiling fan receiver if the transmission signal interferes with a garage door opener or security system. Replace the battery cover on the back of the remote control when finished. Similarly, if you have more than one Hampton Bay ceiling fan in the same room, you will need to set each remote to transmit on a different channel so that it controls the correct fan. Use the high, medium and low buttons on the remote to adjust the Hampton Bay fan speed. You can use the light button to dim the light and the off button to turn off the fan. If the remote stops functioning normally, change the batteries before proceeding with additional troubleshooting. If the batteries were not low, you may need to check the transmitter code switches on both the remote and the fan. It's possible that they were knocked out of position and are no longer matching up. If neither of these solves the issues you are having with the ceiling fan remote, you may need to contact the manufacturer for help or purchase a replacement. Home Depot sells their own brand of decorative ceiling fans under the Hampton Bay name. Some Hampton Bay fan models come with a convenient remote to turn on the fan and the light and adjust the speed. However, you will need to set up the remote to communicate with the ceiling fan. Fortunately, this is a fairly simple process that should only need to be done once. Operating the fan is also accomplished in a straightforward manner. In order for your remote to function properly, it needs to communicate with the fan itself via the same transmitter code combination. Setting the code is fairly straightforward. To begin, turn the remote over to the back and press firmly below the arrow on the battery cover. Slide the cover off and install a 9-volt battery into the compartment. Set each slide code switch near the battery into a position of your choice. Switches can be up or down, with up to 16 available combinations. Set the slide code switches in the receiver on the ceiling fan to the same exact positions that you have set on the remote control. Turn the ceiling fan light on and off and reset the ceiling fan speeds using the remote control to test the signal. If the fan doesn't respond to the remote control after you've set the slide code switches, double-check the slide code switch settings between the remote and the receiver to make sure they match exactly. Change the slide code switches on both the remote control and the ceiling fan receiver if the transmission signal interferes with a garage door opener or security system. Replace the battery cover on the back of the remote control when finished. Similarly, if you have more than one Hampton Bay ceiling fan in the same room, you will need to set each remote to transmit on a different channel so that it controls the correct fan. Use the high, medium and low buttons on the remote to adjust the Hampton Bay fan speed. You can use the light button to dim the light and the off button to turn off the fan. If the remote stops functioning normally, change the batteries before proceeding with additional troubleshooting. If the batteries were not low, you may need to check the transmitter code switches on both the remote and the fan. It's possible that they were knocked out of position and are no longer matching up. If neither of these solves the issues you are having with the ceiling fan remote, you may need to contact the manufacturer for help or purchase a replacement. Home Depot sells their own brand of decorative ceiling fans under the Hampton Bay name. Some Hampton Bay fan models come with a convenient remote to turn on the fan and the light and adjust the speed. However, you will need to set up the remote to communicate with the ceiling fan. Fortunately, this is a fairly simple process that should only need to be done once. Operating the fan is also accomplished in a straightforward manner. In order for your remote to function properly, it needs to communicate with the fan itself via the same transmitter code combination. Setting the code is fairly straightforward. To begin, turn the remote over to the back and press firmly below the arrow on the battery cover. Slide the cover off and install a 9-volt battery into the compartment. Set each slide code switch near the battery into a position of your choice. Switches can be up or down, with up to 16 available combinations. Set the slide code switches in the receiver on the ceiling fan to the same exact positions that you have set on the remote control. Turn the ceiling fan light on and off and reset the ceiling fan speeds using the remote control to test the signal. If the fan doesn't respond to the remote control after you've set the slide code switches, double-check the slide code switch settings between the remote and the receiver to make sure they match exactly. Change the slide code switches on both the remote control and the ceiling fan receiver if the transmission signal interferes with a garage door opener or security system. Replace the battery cover on the back of the remote control when finished. Similarly, if you have more than one Hampton Bay ceiling fan in the same room, you will need to set each remote to transmit on a different channel so that it controls the correct fan. Use the high, medium and low buttons on the remote to adjust the Hampton Bay fan speed. You can use the light button to dim the light and the off button to turn off the fan. If the remote stops functioning normally, change the batteries before proceeding with additional troubleshooting. If the batteries were not low, you may need to check the transmitter code switches on both the remote and the fan. It's possible that they were knocked out of position and are no longer matching up. If neither of these solves the issues you are having with the ceiling fan remote, you may need to contact the manufacturer for help or purchase a replacement. Home Depot sells their own brand of decorative ceiling fans under the Hampton Bay name. Some Hampton Bay fan models come with a convenient remote to turn on the fan and the light and adjust the speed. However, you will need to set up the remote to communicate with the ceiling fan. Fortunately, this is a fairly simple process that should only need to be done once. Operating the fan is also accomplished in a straightforward manner. In order for your remote to function properly, it needs to communicate with the fan itself via the same transmitter code combination. Setting the code is fairly straightforward. To begin, turn the remote over to the back and press firmly below the arrow on the battery cover. Slide the cover off and install a 9-volt battery into the compartment. Set each slide code switch near the battery into a position of your choice. Switches can be up or down, with up to 16 available combinations. Set the slide code switches in the receiver on the ceiling fan to the same exact positions that you have set on the remote control. Turn the ceiling fan light on and off and reset the ceiling fan speeds using the remote control to test the signal. If the fan doesn't respond to the remote control after you've set the slide code switches, double-check the slide code switch settings between the remote and the receiver to make sure they match exactly. Change the slide code switches on both the remote control and the ceiling fan receiver if the transmission signal interferes with a garage door opener or security system. Replace the battery cover on the back of the remote control when finished. Similarly, if you have more than one Hampton Bay ceiling fan in the same room, you will need to set each remote to transmit on a different channel so that it controls the correct fan. Use the high, medium and low buttons on the remote to adjust the Hampton Bay fan speed. You can use the light button to dim the light and the off button to turn off the fan. If the remote stops functioning normally, change the batteries before proceeding with additional troubleshooting. If the batteries were not low, you may need to check the transmitter code switches on both the remote and the fan. It's possible that they were knocked out of position and are no longer matching up. If neither of these solves the issues you are having with the ceiling fan remote, you may need to contact the manufacturer for help or purchase a replacement. Home Depot sells their own brand of decorative ceiling fans under the Hampton Bay name. Some Hampton Bay fan models come with a convenient remote to turn on the fan and the light and adjust the speed. However, you will need to set up the remote to communicate with the ceiling fan. Fortunately, this is a fairly simple process that should only need to be done once. Operating the fan is also accomplished in a straightforward manner. In order for your remote to function properly, it needs to communicate with the fan itself via the same transmitter code combination. Setting the code is fairly straightforward. To begin, turn the remote over to the back and press firmly below the arrow on the battery cover. Slide the cover off and install a 9-volt battery into the compartment. Set each slide code switch near the battery into a position of your choice. Switches can be up or down, with up to 16 available combinations. Set the slide code switches in the receiver on the ceiling fan to the same exact positions that you have set on the remote control. Turn the ceiling fan light on and off and reset the ceiling fan speeds using the remote control to test the signal. If the fan doesn't respond to the remote control after you've set the slide code switches, double-check the slide code switch settings between the remote and the receiver to make sure they match exactly. Change the slide code switches on both the remote control and the ceiling fan receiver if the transmission signal interferes with a garage door opener or security system. Replace the battery cover on the back of the remote control when finished. Similarly, if you have more than one Hampton Bay ceiling fan in the same room, you will need to set each remote to transmit on a different channel so that it controls the correct fan. Use the high, medium and low buttons on the remote to adjust the Hampton Bay fan speed. You can use the light button to dim the light and the off button to turn off the fan. If the remote stops functioning normally, change the batteries before proceeding with additional troubleshooting. If the batteries were not low, you may need to check the transmitter code switches on both the remote and the fan. It's possible that they were knocked out of position and are no longer matching up. If neither of these solves the issues you are having with the ceiling fan remote, you may need to contact the manufacturer for help or purchase a replacement. Home Depot sells their own brand of decorative ceiling fans under the Hampton Bay name. Some Hampton Bay fan models come with a convenient remote to turn on the fan and the light and adjust the speed. However, you will need to set up the remote to communicate with the ceiling fan. Fortunately, this is a fairly simple process that should only need to be done once. Operating the fan is also accomplished in a straightforward manner. In order for your remote to function properly, it needs to communicate with the fan itself via the same transmitter code combination. Setting the code is fairly straightforward. To begin, turn the remote over to the back and press firmly below the arrow on the battery cover. Slide the cover off and install a 9-volt battery into the compartment. Set each slide code switch near the battery into a position of your choice. Switches can be up or down, with up to 16 available combinations. Set the slide code switches in the receiver on the ceiling fan to the same exact positions that you have set on the remote control. Turn the ceiling fan light on and off and reset the ceiling fan speeds using the remote control to test the signal. If the fan doesn't respond to the remote control after you've set the slide code switches, double-check the slide code switch settings between the remote and the receiver to make sure they match exactly. Change the slide code switches on both the remote control and the ceiling fan receiver if the transmission signal interferes with a garage door opener or security system. Replace the battery cover on the back of the remote control when finished. Similarly, if you have more than one Hampton Bay ceiling fan in the same room, you will need to set each remote to transmit on a different channel so that it controls the correct fan. Use the high, medium and low buttons on the remote to adjust the Hampton Bay fan speed. You can use the light button to dim the light and the off button to turn off the fan. If the remote stops functioning normally, change the batteries before proceeding with additional troubleshooting. If the batteries were not low, you may need to check the transmitter code switches on both the remote and the fan. It's possible that they were knocked out of position and are no longer matching up. If neither of these solves the issues you are having with the ceiling fan remote, you may need to contact the manufacturer for help or purchase a replacement. Home Depot sells their own brand of decorative ceiling fans under the Hampton Bay name. Some Hampton Bay fan models come with a convenient remote to turn on the fan and the light and adjust the speed. However, you will need to set up the remote to communicate with the ceiling fan. Fortunately, this is a fairly simple process that should only need to be done once. Operating the fan is also accomplished in a straightforward manner. In order for your remote to function properly, it needs to communicate with the fan itself via the same transmitter code combination. Setting the code is fairly straightforward. To begin, turn the remote over to the back and press firmly below the arrow on the battery cover. Slide the cover off and install a 9-volt battery into the compartment. Set each slide code switch near the battery into a position of your choice. Switches can be up or down, with up to 16 available combinations. Set the slide code switches in the receiver on the ceiling fan to the same exact positions that you have set on the remote control. Turn the ceiling fan light on and off and reset the ceiling fan speeds using the remote control to test the signal. If the fan doesn't respond to the remote control after you've set the slide code switches, double-check the slide code switch settings between the remote and the receiver to make sure they match exactly. Change the slide code switches on both the remote control and the ceiling fan receiver if the transmission signal interferes with a garage door opener or security system. Replace the battery cover on the back of the remote control when finished. Similarly, if you have more than one Hampton Bay ceiling fan in the same room, you will need to set each remote to transmit on a different channel so that it controls the correct fan. Use the high, medium and low buttons on the remote to adjust the Hampton Bay fan speed. You can use the light button to dim the light and the off button to turn off the fan. If the remote stops functioning normally, change the batteries before proceeding with additional troubleshooting. If the batteries were not low, you may need to check the transmitter code switches on both the remote and the fan. It's possible that they were knocked out of position and are no longer matching up. If neither of these solves the issues you are having with the ceiling fan remote, you may need to contact the manufacturer for help or purchase a replacement. Home Depot sells their own brand of decorative ceiling fans under the Hampton Bay name. Some Hampton Bay fan models come with a convenient remote to turn on the fan and the light and adjust the speed. However, you will need to set up the remote to communicate with the ceiling fan. Fortunately, this is a fairly simple process that should only need to be done once. Operating the fan is also accomplished in a straightforward manner. In order for your remote to function properly, it needs to communicate with the fan itself via the same transmitter code combination. Setting the code is fairly straightforward. To begin, turn the remote over to the back and press firmly below the arrow on the battery cover. Slide the cover off and install a 9-volt battery into the compartment. Set each slide code switch near the battery into a position of your choice. Switches can be up or down, with up to 16 available combinations. Set the slide code switches in the receiver on the ceiling fan to the same exact positions that you have set on the remote control. Turn the ceiling fan light on and off and reset the ceiling fan speeds using the remote control to test the signal. If the fan doesn't respond to the remote control after you've set the slide code switches, double-check the slide code switch settings between the remote and the receiver to make sure they match exactly. Change the slide code switches on both the remote control and the ceiling fan receiver if the transmission signal interferes with a garage door opener or security system. Replace the battery cover on the back of the remote control when finished. Similarly, if you have more than one Hampton Bay ceiling fan in the same room, you will need to set each remote to transmit on a different channel so that it controls the correct fan. Use the high, medium and low buttons on the remote to adjust the Hampton Bay fan speed. You can use the light button to dim the light and the off button to turn off the fan. If the remote stops functioning normally, change the batteries before proceeding with additional troubleshooting. If the batteries were not low, you may need to check the transmitter code switches on both the remote and the fan. It's possible that they were knocked out of position and are no longer matching up. If neither of these solves the issues you are having with the ceiling fan remote, you may need to contact the manufacturer for help or purchase a replacement. Home Depot sells their own brand of decorative ceiling fans under the Hampton Bay name. Some Hampton Bay fan models come with a convenient remote to turn on the fan and the light and adjust the speed. However, you will need to set up the remote to communicate with the ceiling fan. Fortunately, this is a fairly simple process that should only need to be done once. Operating the fan is also accomplished in a straightforward manner. In order for your remote to function properly, it needs to communicate with the fan itself via the same transmitter code combination. Setting the code is fairly straightforward. To begin, turn the remote over to the back and press firmly below the arrow on the battery cover. Slide the cover off and install a 9-volt battery into the compartment. Set each slide code switch near the battery into a position of your choice. Switches can be up or down, with up to 16 available combinations. Set the slide code switches in the receiver on the ceiling fan to the same exact positions that you have set on the remote control. Turn the ceiling fan light on and off and reset the ceiling fan speeds using the remote control to test the signal. If the fan doesn't respond to the remote control after you've set the slide code switches, double-check the slide code switch settings between the remote and the receiver to make sure they match exactly. Change the slide code switches on both the remote control and the ceiling fan receiver if the transmission signal interferes with a garage door opener or security system. Replace the battery cover on the back of the remote control when finished. Similarly, if you have more than one Hampton Bay ceiling fan in the same room, you will need to set each remote to transmit on a different channel so that it controls the correct fan. Use the high, medium and low buttons on the remote to adjust the Hampton Bay fan speed. You can use the light button to dim the light and the off button to turn off the fan. If the remote stops functioning normally, change the batteries before proceeding with additional troubleshooting. If the batteries were not low, you may need to check the transmitter code switches on both the remote and the fan. It's possible that they were knocked out of position and are no longer matching up. If neither of these solves the issues you are having with the ceiling fan remote, you may need to contact the manufacturer for help or purchase a replacement. Home Depot sells their own brand of decorative ceiling fans under the Hampton Bay name. Some Hampton Bay fan models come with a convenient remote to turn on the fan and the light and adjust the speed. However, you will need to set up the remote to communicate with the ceiling fan. Fortunately, this is a fairly simple process that should only need to be done once. Operating the fan is also accomplished in a straightforward manner. In order for your remote to function properly, it needs to communicate with the fan itself via the same transmitter code combination. Setting the code is fairly straightforward. To begin, turn the remote over to the back and press firmly below the arrow on the battery cover. Slide the cover off and install a 9-volt battery into the compartment. Set each slide code switch near the battery into a position of your choice. Switches can be up or down, with up to 16 available combinations. Set the slide code switches in the receiver on the ceiling fan to the same exact positions that you have set on the remote control. Turn the ceiling fan light on and off and reset the ceiling fan speeds using the remote control to test the signal. If the fan doesn't respond to the remote control after you've set the slide code switches, double-check the slide code switch settings between the remote and the receiver to make sure they match exactly. Change the slide code switches on both the remote control and the ceiling fan receiver if the transmission signal interferes with a garage door opener or security system. Replace the battery cover on the back of the remote control when finished. Similarly, if you have more than one Hampton Bay ceiling fan in the same room, you will need to set each remote to transmit on a different channel so that it controls the correct fan. Use the high, medium and low buttons on the remote to adjust the Hampton Bay fan speed. You can use the light button to dim the light and the off button to turn off the fan. If the remote stops functioning normally, change the batteries before proceeding with additional troubleshooting. If the batteries were not low, you may need to check the transmitter code switches on both the remote and the fan. It's possible that they were knocked out of position and are no longer matching up. If neither of these solves the issues you are having with the ceiling fan remote, you may need to contact the manufacturer for help or purchase a replacement. Home Depot sells their own brand of decorative ceiling fans under the Hampton Bay name. Some Hampton Bay fan models come with a convenient remote to turn on the fan and the light and adjust the speed. However, you will need to set up the remote to communicate with the ceiling fan. Fortunately, this is a fairly simple process that should only need to be done once. Operating the fan is also accomplished in a straightforward manner. In order for your remote to function properly, it needs to communicate with the fan itself via the same transmitter code combination. Setting the code is fairly straightforward. To begin, turn the remote over to the back and press firmly below the arrow on the battery cover. Slide the cover off and install a 9-volt battery into the compartment. Set each slide code switch near the battery into a position of your choice. Switches can be up or down, with up to 16 available combinations. Set the slide code switches in the receiver on the ceiling fan to the same exact positions that you have set on the remote control. Turn the ceiling fan light on and off and reset the ceiling fan speeds using the remote control to test the signal. If the fan doesn't respond to the remote control after you've set the slide code switches, double-check the slide code switch settings between the remote and the receiver to make sure they match exactly. Change the slide code switches on both the remote control and the ceiling fan receiver if the transmission signal interferes with a garage door opener or security system. Replace the battery cover on the back of the remote control when finished. Similarly, if you have more than one Hampton Bay ceiling fan in the same room, you will need to set each remote to transmit on a different channel so that it controls the correct fan. Use the high, medium and low buttons on the remote to adjust the Hampton Bay fan speed. You can use the light button to dim the light and the off button to turn off the fan. If the remote stops functioning normally, change the batteries before proceeding with additional troubleshooting. If the batteries were not low, you may need to check the transmitter code switches on both the remote and the fan. It's possible that they were knocked out of position and are no longer matching up. If neither of these solves the issues you are having with the ceiling fan remote, you may need to contact the manufacturer for help or purchase a replacement. Home Depot sells their own brand of decorative ceiling fans under the Hampton Bay name. Some Hampton Bay fan models come with a convenient remote to turn on the fan and the light and adjust the speed. However, you will need to set up the remote to communicate with the ceiling fan. Fortunately, this is a fairly simple process that should only need to be done once. Operating the fan is also accomplished in a straightforward manner. In order for your remote to function properly, it needs to communicate with the fan itself via the same transmitter code combination. Setting the code is fairly straightforward. To begin, turn the remote over to the back and press firmly below the arrow on the battery cover. Slide the cover off and install a 9-volt battery into the compartment. Set each slide code switch near the battery into a position of your choice. Switches can be up or down, with up to 16 available combinations. Set the slide code switches in the receiver on the ceiling fan to the same exact positions that you have set on the remote control. Turn the ceiling fan light on and off and reset the ceiling fan speeds using the remote control to test the signal. If the fan doesn't respond to the remote control after you've set the slide code switches, double-check the slide code switch settings between the remote and the receiver to make sure they match exactly. Change the slide code switches on both the remote control and the ceiling fan receiver if the transmission signal interferes with a garage door opener or security system. Replace the battery cover on the back of the remote control when finished. Similarly, if you have more than one Hampton Bay ceiling fan in the same room, you will need to set each remote to transmit on a different channel so that it controls the correct fan. Use the high, medium and low buttons on the remote to adjust the Hampton Bay fan speed. You can use the light button to dim the light and the off button to turn off the fan. If the remote stops functioning normally, change the batteries before proceeding with additional troubleshooting. If the batteries were not low, you may need to check the transmitter code switches on both the remote and the fan. It's possible that they were knocked out of position and are no longer matching up. If neither of these solves the issues you are having with the ceiling fan remote, you may need to contact the manufacturer for help or purchase a replacement. Home Depot sells their own brand of decorative ceiling fans under the Hampton Bay name. Some Hampton Bay fan models come with a convenient remote to turn on the fan and the light and adjust the speed. However, you will need to set up the remote to communicate with the ceiling fan. Fortunately, this is a fairly simple process that should only need to be done once. Operating the fan is also accomplished in a straightforward manner. In order for your remote to function properly, it needs to communicate with the fan itself via the same transmitter code combination. Setting the code is fairly straightforward. To begin, turn the remote over to the back and press firmly below the arrow on the battery cover. Slide the cover off and install a 9-volt battery into the compartment. Set each slide code switch near the battery into a position of your choice. Switches can be up or down, with up to 16 available combinations. Set the slide code switches in the receiver on the ceiling fan to the same exact positions that you have set on the remote control. Turn the ceiling fan light on and off and reset the ceiling fan speeds using the remote control to test the signal. If the fan doesn't respond to the remote control after you've set the slide code switches, double-check the slide code switch settings between the remote and the receiver to make sure they match exactly. Change the slide code switches on both the remote control and the ceiling fan receiver if the transmission signal interferes with a garage door opener or security system. Replace the battery cover on the back of the remote control when finished. Similarly, if you have more than one Hampton Bay ceiling fan in the same room, you will need to set each remote to transmit on a different channel so that it controls the correct fan. Use the high, medium and low buttons on the remote to adjust the Hampton Bay fan speed. You can use the light button to dim the light and the off button to turn off the fan. If the remote stops functioning normally, change the batteries before proceeding with additional troubleshooting. If the batteries were not low, you may need to check the transmitter code switches on both the remote and the fan. It's possible that they were knocked out of position and are no longer matching up. If neither of these solves the issues you are having with the ceiling fan remote, you may need to contact the manufacturer for help or purchase a replacement. Home Depot sells their own brand of decorative ceiling fans under the Hampton Bay name. Some Hampton Bay fan models come with a convenient remote to turn on the fan and the light and adjust the speed. However, you will need to set up the remote to communicate with the ceiling fan. Fortunately, this is a fairly simple process that should only need to be done once. Operating the fan is also accomplished in a straightforward manner. In order for your remote to function properly, it needs to communicate with the fan itself via the same transmitter code combination. Setting the code is fairly straightforward. To begin, turn the remote over to the back and press firmly below the arrow on the battery cover. Slide the cover off and install a 9-volt battery into the compartment. Set each slide code switch near the battery into a position of your choice. Switches can be up or down, with up to 16 available combinations. Set the slide code switches in the receiver on the ceiling fan to the same exact positions that you have set on the remote control. Turn the ceiling fan light on and off and reset the ceiling fan speeds using the remote control to test the signal. If the fan doesn't respond to the remote control after you've set the slide code switches, double-check the slide code switch settings between the remote and the receiver to make sure they match exactly. Change the slide code switches on both the remote control and the ceiling fan receiver if the transmission signal interferes with a garage door opener or security system. Replace the battery cover on the back of the remote control when finished. Similarly, if you have more than one Hampton Bay ceiling fan in the same room, you will need to set each remote to transmit on a different channel so that it controls the correct fan. Use the high, medium and low buttons on the remote to adjust the Hampton Bay fan speed. You can use the light button to dim the light and the off button to turn off the fan. If the remote stops functioning normally, change the batteries before proceeding with additional troubleshooting. If the batteries were not low, you may need to check the transmitter code switches on both the remote and the fan. It's possible that they were knocked out of position and are no longer matching up. If neither of these solves the issues you are having with the ceiling fan remote, you may need to contact the manufacturer for help or purchase a replacement. Home Depot sells their own brand of decorative ceiling fans under the Hampton Bay name. Some Hampton Bay fan models come with a convenient remote to turn on the fan and the light and adjust the speed. However, you will need to set up the remote to communicate with the ceiling fan. Fortunately, this is a fairly simple process that should only need to be done once. Operating the fan is also accomplished in a straightforward manner. In order for your remote to function properly, it needs to communicate with the fan itself via the same transmitter code combination. Setting the code is fairly straightforward. To begin, turn the remote over to the back and press firmly below the arrow on the battery cover. Slide the cover off and install a 9-volt battery into the compartment. Set each slide code switch near the battery into a position of your choice. Switches can be up or down, with up to 16 available combinations. Set the slide code switches in the receiver on the ceiling fan to the same exact positions that you have set on the remote control. Turn the ceiling fan light on and off and reset the ceiling fan speeds using the remote control to test the signal. If the fan doesn't respond to the remote control after you've set the slide code switches, double-check the slide code switch settings between the remote and the receiver to make sure they match exactly. Change the slide code switches on both the remote control and the ceiling fan receiver if the transmission signal interferes with a garage door opener or security system. Replace the battery cover on the back of the remote control when finished. Similarly, if you have more than one Hampton Bay ceiling fan in the same room, you will need to set each remote to transmit on a different channel so that it controls the correct fan. Use the high, medium and low buttons on the remote to adjust the Hampton Bay fan speed. You can use the light button to dim the light and the off button to turn off the fan. If the remote stops functioning normally, change the batteries before proceeding with additional troubleshooting. If the batteries were not low, you may need to check the transmitter code switches on both the remote and the fan. It's possible that they were knocked out of position and are no longer matching up. If neither of these solves the issues you are having with the ceiling fan remote, you may need to contact the manufacturer for help or purchase a replacement. Home Depot sells their own brand of decorative ceiling fans under the Hampton Bay name. Some Hampton Bay fan models come with a convenient remote to turn on the fan and the light and adjust the speed. However, you will need to set up the remote to communicate with the ceiling fan. Fortunately, this is a fairly simple process that should only need to be done once. Operating the fan is also accomplished in a straightforward manner. In order for your remote to function properly, it needs to communicate with the fan itself via the same transmitter code combination. Setting the code is fairly straightforward. To begin, turn the remote over to the back and press firmly below the arrow on the battery cover. Slide the cover off and install a 9-volt battery into the compartment. Set each slide code switch near the battery into a position of your choice. Switches can be up or down, with up to 16 available combinations. Set the slide code switches in the receiver on the ceiling fan to the same exact positions that you have set on the remote control. Turn the ceiling fan light on and off and reset the ceiling fan speeds using the remote control to test the signal. If the fan doesn't respond to the remote control after you've set the slide code switches, double-check the slide code switch settings between the remote and the receiver to make sure they match exactly. Change the slide code switches on both the remote control and the ceiling fan receiver if the transmission signal interferes with a garage door opener or security system. Replace the battery cover on the back of the remote control when finished. Similarly, if you have more than one Hampton Bay ceiling fan in the same room, you will need to set each remote to transmit on a different channel so that it controls the correct fan. Use the high, medium and low buttons on the remote to adjust the Hampton Bay fan speed. You can use the light button to dim the light and the off button to turn off the fan. If the remote stops functioning normally, change the batteries before proceeding with additional troubleshooting. If the batteries were not low, you may need to check the transmitter code switches on both the remote and the fan. It's possible that they were knocked out of position and are no longer matching up. If neither of these solves the issues you are having with the ceiling fan remote, you may need to contact the manufacturer for help or purchase a replacement. Home Depot sells their own brand of decorative ceiling fans under the Hampton Bay name. Some Hampton Bay fan models come with a convenient remote to turn on the fan and the light and adjust the speed. However, you will need to set up the remote to communicate with the ceiling fan. Fortunately, this is a fairly simple process that should only need to be done once. Operating the fan is also accomplished

