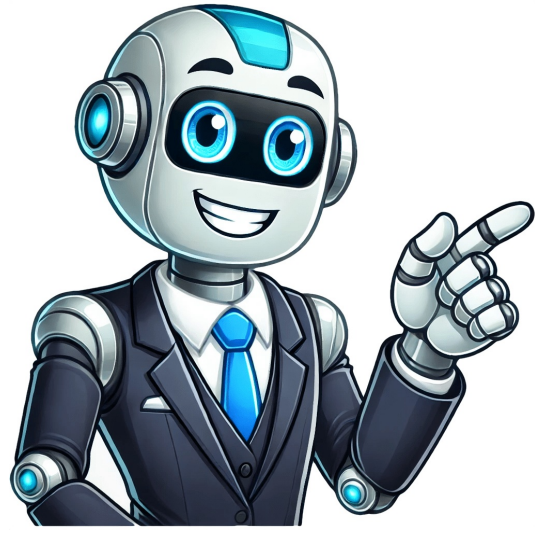


Continue

























The Epson Ink Pad Resetter allows the user to reset the ink pad counter, so that the printer can continue to print. The Epson printer ink pad resetter is a software program that is designed to reset the ink pad counter on Epson printers. In conclusion, the Epson ink pad resetter is a software program that is designed to reset the ink pad counter on Epson printers.Are you an Epson printer owner who is frustrated by the Service Required error message? If so, youre not alone. Many Epson printer owners encounter this issue, which occurs when the printers ink pad becomes full. Fortunately, there is a simple solution to this problem: resetting the ink pad. The Epson printer ink pad counter is a component that tracks the amount of ink that has been used. When the ink pad becomes full, the printer will stop printing and an error message will appear. To reset the ink pad counter, you will need to use a tool called the Epson Adjustment Program.The Epson Adjustment Program is a tool that allows you to reset the ink pad counter on your printer. You can download it from the Epson website. Once you have downloaded the program, you will need to install it on your computer.Once the program is installed, you will need to run it. The program will guide you through the process of resetting the ink pad counter. You will need to follow the instructions carefully.It is important to note that resetting the ink pad counter will reset the ink pad counter to zero. This means that you will need to replace the ink pad in order to continue printing.If you are unable to reset the ink pad counter using the Epson Adjustment Program, you may need to contact Epson for assistance. They may be able to assist you further. 1. The Epson Ink Pad Resetter is a software program that resets the ink pad counter on Epson inkjet printers.2. When the ink pad counter reaches 100%, the printer will stop printing and indicate that the ink pads need to be replaced.3. The Epson Ink Pad Resetter allows the user to reset the ink pad counter, so that the printer can continue to print.4. The Epson Ink Pad Resetter can be downloaded from the internet for free, and is compatible with most Epson inkjet printers.5. It is important to use the Epson Ink Pad Resetter correctly, as using the resetter incorrectly can cause damage to the printer. The Epson printer ink pad resetter is a software program that is designed to reset the ink pad counter on Epson printers. The ink pad counter is a counter that keeps track of how much ink has been used in the Epson printer. When the ink pad counter reaches a certain level, the printer will stop working and an error message will be displayed.The Epson ink pad resetter works by resetting the ink pad counter back to zero. Once the ink pad counter has been reset, the printer will be able to continue printing and the error message will no longer appear.It is important to note that the Epson ink pad resetter should only be used as a last resort. If the ink pad counter has been reset too many times, the printer may stop working properly and need to be replaced. It is also important to note that the Epson ink pad resetter may not work on all Epson printers.In conclusion, the Epson ink pad resetter is a software program that is designed to reset the ink pad counter on Epson printers. It is a useful tool to have on hand, but should only be used as a last resort. To use the Epson ink pad resetter, follow these steps:1. Turn off the printer and unplug it from the power source.2. Press and hold the Stop button for three seconds.3. While holding the Stop button, plug the printer back into the power source.4. Continue holding the Stop button until the Ink Charge and Maintenance Required lights stop flashing and remain lit.5. Release the Stop button.6. Insert the Epson ink pad resetter into the USB port on the back of the printer.7. Press and hold the Stop button again.8. Continue holding the Stop button for five seconds, then release it.9. The printer will now begin the reset process. The Ink Charge and Maintenance Required lights will flash in unison, then stop flashing and remain lit.10. Once the reset process is complete, the Ink Charge and Maintenance Required lights will turn off.11. Epsons ink pad resetter, also known as the Epson waste ink pad counter reset tool, is a program that is designed to reset the waste ink pad counter on Epson inkjet printers. This counter keeps track of how much ink has been wasted during the printing process, and when it reaches its limit, the printer will stop working and show a Service Required or End of Service Life error message.The Epson ink pad resetter can be used to reset this counter, allowing the printer to continue working. However, it is important to keep in mind that using the resetter may void your printers warranty.One of the main benefits of using the Epson ink pad resetter is that it can save you money. If your printer stops working due to a waste ink pad counter error, it can be expensive to have it repaired. By using the resetter, you can avoid this expense and continue using your printer.Another benefit of the Epson ink pad resetter is that it can help you extend the life of your printer. By resetting the waste ink pad counter, you can prevent the printer from prematurely shutting down and needing to be replaced.Overall, the Epson ink pad resetter can be a useful tool for Epson inkjet printer owners. However, it is important to use it responsibly and to consider the potential consequences of using it. There are no major drawbacks to using the Epson ink pad resetter. However, as with any tool or software, there are a few potential issues to keep in mind.One potential issue is that the resetter may not work for all Epson printers. Some older models may not be compatible with the resetter, or there may be specific firmware or software requirements that need to be met in order for the resetter to work properly.Another potential issue is that the resetter may void the warranty on your printer. This is because the resetter is considered a hack or modification of the printer, and manufacturers typically do not approve of these sorts of changes. However, this is typically only an issue if you are suing within the warranty period.Overall, the Epson ink pad resetter is a safe and effective tool for resetting the ink pad counter on your printer. Just be sure to use it responsibly and in accordance with the manufacturers instructions. In conclusion, resetting the Epson printer ink pad is a fairly simple process that can be completed in a few minutes. However, it is important to note that this should only be done as a last resort and that it is best to use up the existing ink cartridges before resetting the ink pad. Additionally, it is always a good idea to have a spare ink cartridge on hand in case of emergencies.Resetter Epson L4150 is adjustment program to reset waste ink pad counter in Epson L4150 printer. Resetter Epson L4150 like the other types of resetter, it can used when the printer Epson L4150 appearing error messages Service Required. After we make sure the hardware of Epson L4150 is still good, we can try using this resetter, so that the error messages will gone after resetting. To reset Epson L4150 printer, you need to disable all of your antivirus first including Windows Defender Realtime Protection. You can disable for temporary of all your antivirus and Windows Defender. Then you can download and Extract the resetter epson L4150. To start resetting your Epson L4150 printer, open the resetter folder that you extracted and double click on Adjprog L4150.exe, and you need to add license key, after that you can select Particular Adjustment Mode, then select Waste ink pad counter and click OK, tick the section Main pad counter, press button Check, then press button Initialize, click Finish, turn off your printer and turn it back on. Get Epson L4150 Resetter via Server 1 Get Epson L4150 Resetter via Server 2 Are you experiencing issues with your Epson printer due to a full waste ink pad? Don't worry, as this article will guide you through the process of cleaning and resetting the waste ink pads to restore your printer's functionality. With step-by-step instructions and valuable tips, you'll be able to resolve the waste ink problem efficiently. For a detailed visual demonstration, make sure to watch the accompanying video.Understanding Waste Ink Pads:Epson printers utilize waste ink pads to collect excess ink generated during printing and maintenance cycles. Over time, these pads can become saturated, leading to error messages and printing problems. It's important to address this issue promptly to avoid further complications.Step 1: Determining the Waste Ink Pad Status.Before proceeding with any cleaning or resetting procedures, it's crucial to determine the status of your waste ink pads. Epson printers usually display a "Service Required" or "Waste Ink Pad Full" message when the pads are nearing capacity. Refer to your printer's manual or online resources for specific instructions on accessing this information.Step 2: Cleaning the Waste Ink Pad.Cleaning the waste ink pad involves physically removing the pads, rinsing them, and allowing them to dry thoroughly. This process requires precision and caution to avoid damaging any printer components. Refer to the manufacturer's instructions or consult a professional technician to ensure a safe and effective cleaning process.Step 3: Resetting the Waste Ink Counter.After cleaning the waste ink pads, it's crucial to reset the waste ink counter to clear the error message and restore normal printer functionality. Epson printers have different methods for resetting the counter, including using dedicated software or specific button combinations. Consult your printer's manual or online resources for the appropriate reset procedure.Step 4: Replacing the Waste Ink Pad (if necessary).In some cases, the waste ink pads may be too worn out or damaged to clean effectively. If this is the situation, replacing the waste ink pad becomes necessary. Epson offers replacement pads for their printers, and you can find detailed instructions in the printer's manual or through official support channels. It's advisable to follow the recommended replacement schedule to prevent future complications.Step 5: Regular Maintenance and Prevention.To avoid future waste ink pad issues, regular maintenance is essential. This includes periodic cleaning of the pads, keeping the printer in a clean and dust-free environment, and following proper ink cartridge handling practices. By taking preventive measures, you can extend the lifespan of your printer and maintain optimal performance.Cleaning and resetting the waste ink pads in your Epson printer is a crucial maintenance task that can help resolve printing problems and prevent further damage. By following the step-by-step instructions provided in this article and watching the accompanying video, you can effectively clean, reset, and replace the waste ink pads, ensuring the longevity and optimal performance of your Epson printer. Don't let waste ink pad issues hinder your productivity; take action today and restore your printer's functionality. Video Library 3:26 EpsonYUIMA NAKAZATO The collaborative journey of YUIMA NAKAZATO and Epson towards the evolution of sustainable fashion. 22:10 The collection "FADE" by YUIMA NAKAZATO for Paris Haute Couture Fashion Week Spring - Summer 2025 12:16 Video of the new collection by YUIMA NAKAZATO 04:59 [Epson trailer edition] YUIMA NAKAZATO Documentary Movie "DUST TO DUST" 01:44 Epson Corporate Purpose 01:59 Our Journey 01:02 Earth Hour 2024 and Epson 00:52 Switch to Heat-Free Technology 01:20 Epson's small paper cycle: PaperLab 03:09 The Fantasia Aquarium 2023 During Epsons printer cleaning cycle, it dispels ink from its nozzles down a waste pipe into an absorbent pad. Epson has put a counter in their printers that counts every page passed through the printer and has set the printer to shut down after a certain number to prevent overflow of the waste ink pad. Usually, your printers waste pad is around 40% to 80% full when the printer starts showing an error message. After the initial message, you can only print 20 pages before your Epson printer refuses to print anymore. There is a workaround that you can use to reset the counter to its initial state. Follow these steps to solve the Epson waste ink pad in the printer is saturated error.Warning: Ideally, you should reset the counter when you clean or replace the waste pad. Try to clean or replace the waste ink pad as soon as possible to avoid overflow of ink and any possible damage to your printer.Download the Utility (here). Use WinRAR to extract the file. Once extracted and before you begin, make sure your printers driver is already installed on the computer.Double-click exe to run the utility.Epson adjustment program screen will appear. Click Select to select the model of your Epson printer.A new window will appear. Select your printer model and click OK.On the next screen, click the button titled Particular adjustment mode.A list of options will appear. Choose the Waste ink pad counter under the maintenance group and click OK.Another screen will appear. Make sure that the Main pad counter checkbox on this page is checked. Click the Check button to check the current protection counters value. Click Initialization button to reset the protection counter to the initial value. Underscoring Epsons commitment to supporting its customers, this website has been updated to clear up any misconceptions regarding the serviceability and lifecycle of Epson printers. Similar to most electro-mechanical consumer devices, the lifespan of consumer inkjet printers depends on many variables of use over time. Epsons consumer inkjet printers issue a service message to alert customers that the printers ink pads are approaching the end of acceptable print functionality. Most print users will never receive this message under intended use scenarios. It is directly dependent on factors like the printer model, frequency, usage conditions, and type of printing over time. In the event a user receives this alert, the printer needs to be properly maintained in order to continue printing. Epson understands the importance for its customers to be able to print whenever they need to and offers flexible options to extend printing, including: A one-time Maintenance Reset Utility, enabling north American customers to continue printing for a limited time in order to determine the repair solution that best fits their needs. Customers can contact the Epson Service & Support team at 562-276-1300 (U.S.) or 905-709-9475 (Canada) | about Epsons low-cost ink pad replacement service, which includes shipping and packaging round trip to and from Epson. Customers can also work with a local certified technician to replace the ink pad to extend the use of the printer. For customers who determine that the printer no longer meets their needs, Epson offers a recycling program as well a wide range of innovative new printing solutions. There comes a moment when the printer stops printing and shows an error: The ink pad needs service. Contact Epson Service required. A printers ink pad is at the end of its service life. Please contact Epson Support. The waste ink pad counter on Epson printers overflows during printing and eventually blocks the printing process. This is not a printer malfunction, and the issue can be resolved by yourself using a program. Here are the steps to do so: The Epson L4150 printer will then be able to continue printing. Install the utility for Windows, Mac OS or Linux! How can financial brands set themselves apart through visual storytelling? Our experts explainhow.Learn MoreThe Motorsport Images Collections captures events from 1895 to todays most recentcoverage.Discover The CollectionCurated, compelling, and worth your time. Explore our latest gallery of EditorsPicks.Browse Editors' FavoritesHow can financial brands set themselves apart through visual storytelling? Our experts explainhow.Learn MoreThe Motorsport Images Collections captures events from 1895 to todays most recentcoverage.Discover The CollectionCurated, compelling, and worth your time. Explore our latest gallery of EditorsPicks.Browse Editors' FavoritesError A printer's ink pad is at the end of its service life.Instruction manual1 Extract archive2 Run the program AdjProg Rev3.exe3Push button Select4Select your printermodelL4150L4151L4153L4156L4158L4160L4163L4165L4166L4167L4168L41695Printer port can be left Auto selection, but it is advisable to choose which one it is connected to and press the button OK6Push button Particular adjustment mode7Select Waste ink pad counter and push button OK8Put check marks opposite Main Pad Counter and Platenpad counterand push buttonCheck to see how many counters are full (paragraph 7 is not required make)9Put check marks opposite MainPadCounter andPlatenpad counterand push button Initializationfor reset counters , after program the show When the OK button is clicked, counter will be initialized ,and push button OKNext, the program will ask you to restart the printer Please turn off the printer,restart the printer by button and close the programAll diapers are reset, then we recommend removing and washing the absorbent diaper pad or replacing itOr look videoA reusable program for waste ink reset of printerEpson L4150, L4151, L4153, L4156, L4158, L4160, L4163, L4165, L4166, L4167, L4168, L4169 you can order on this pageEpson L4150, L4151, L4153, L4156, L4158, L4160, L4163, L4165, L4166, L4167, L4168, L4169 Adjustment ProgramOr order the serviceReset Waste Ink Pad Counter Online Share copy and redistribute the material in any medium or format for any purpose, even commercially. Adapt remix, transform, and build upon the material for any purpose, even commercially. The licensor cannot revoke these freedoms as long as you follow the license terms. Attribution You must give appropriate credit, provide a link to the license, and indicate if changes were made . You may do so in any reasonable manner, but not in any way that suggests the licensor endorses you or your use. ShareAlike If you remix, transform, or build upon the material, you must distribute your contributions under the same license as the original. No additional restrictions You may not apply legal terms or technological measures that legally restrict others from doing anything the license permits. You do not have to comply with the license for elements of the material in the public domain or where your use is permitted by an applicable exception or limitation . No warranties are given. The license may not give you all of the permissions necessary for your intended use. For example, other rights such as publicity, privacy, or moral rights may limit how you use the material. Save - 9 USD 30% - OFF TOTAL 20.97 USD Save - 20 USD 40% - OFF TOTAL 29.95 USD Windows TipsHow to Lock Your Windows PC Remotely 4 Easy Methods Programs and AppsHow to Fix Out of GPU Memory in Blender Programs and AppsFix: Ubisoft Connect Disk Access Error/Disk Write Error Windows TroubleshootingFix: AMDRyzenMasterDriver.sys Load Error in Windows File ConversionHow to Zip, Unzip & Open RAR/7Z Files on Windows 11 & 10Page 2GHz stands for gigahertz and is used to measure radio frequencies, including those for Wi-Fi, which operates on 2.4 GHz and 5 GHz bands, impacting data transmission and device connectivity.The 2.4 GHz band offers wider coverage and better penetration through walls, but it's slower and more prone to interference compared to the 5 GHz band, which provides faster data speeds and less congestion but has a shorter range.The choice between 2.4 GHz and 5 GHz depends on your proximity to the router and the type of online activities you engage in. Use 5 GHz for high-speed needs close to the router, and 2.4 GHz for broader coverage across larger distances.Unlike Internet speeds where the higher equals the better, frequency speeds like 2.4 GHz, 5 GHz, or even 6 GHz work a bit differently. This means that if you are in a coffee shop with both 2.4 GHz and 5 GHz networks available, going for the latter is probably not the best choice as 2.4 GHz can offer a faster internet connection than 5 GHz depending on the situation.In this article, we will break down the differences between 2.4 GHz and 5 GHz and which one is right for you. So, lets jump right in!GHz explained!GHz refers to gigahertz and is an electromagnetic radio frequency used to transmit information like sounds or images via radio, television, mobile phones, and wireless internet connections. Since Wi-fi frequency bands are higher than FM radio they are measured in Gigahertz which equals one billion hertz rather than Megahertz which equals one million hertz.Now what do the numbers before GHz mean? Well, these numbers (2.4 and 5) represent the two different bands of radio frequencies used by your Wi-Fi router to connect to internet-enabled devices in your home or office. The reason why router manufacturers label the two individually is because each of them is useful for a different purpose.The two primary factors are speed and range when discussing the differences between 2.4GHz and 5GHz. Lets look closely at these two along with a few others.ProCons2.4 GHz Greater coverage area Better penetration through walls and objects Slower data speeds More prone to interference and congestion5 GHz Faster data speeds Less interference and congestion Shorter coverage area Less effective at penetrating through solid objectsA quick breakdown between the twain terms of speed, the 5 GHz band has a significant advantage as it provides faster data rates compared to 2.4 GHz which offers a slower speed. Specifically, 2.4 GHz can deliver max speed of up to 100 megabits per second (Mbps), while 5 GHz can deliver up to 1 gigabit per second (Gbps).Wireless connection speedSo, whether youre streaming HD video, gaming online, or downloading large files, the 5 GHz network offers the speed you need for smoother and faster performance.While 5 GHz is great for faster speeds, it falls short when covering larger distances. Conversely, the biggest advantage of 2.4 GHz is that it can cover longer distances. Due to its lower frequency, the 2.4 GHz frequency can penetrate through walls and other solid objects better than higher-frequency ones. For comparison, a 2.4 GHz signal drops by 70% through drywall, while a 5 GHz signal drops by 90%.Which one has better range and coverage?Another advantage of lower frequencies is longer wavelengths which allows them to bend around furniture and objects more easily. This makes it ideal for use in large spaces as youll have fewer Wi-Fi dead spots and better coverage around your home. A Wi-Fi frequency band is divided into channels which is the medium through which we send or receive data. The 2.4 GHz frequency band has 11 channels whereas the 5 GHz band has 45 different channels. However, out of the 11 only 3 (1, 6, and 11) can work without interfering with each other. The rest often overlap and interfere with the operation of sending and receiving data.Channel AvailabilityChannel interference can significantly affect your internet connection and the most common cause of this is Congestion. Network channels are like highways and if too many cars use the same one or two lanes it can cause a traffic jam. When theres a lot of data traffic on a signal channel everything slows down and your Wi-Fi signal drops.By comparison, the 5 GHz band has 21 non-overlapping channels which allows it to have less interference and offer faster speeds. Additionally, with 5 GHz being less crowded than 2 GHz, theres less chance of congestion, making Wi-Fi connections more reliable.Now that you know that a 2.4 GHz is slower but travels further than 5 GHz frequencies which provide faster data speeds but at the cost of a shorter range, its time to choose the best one for yourself. The choice of using 2.4 GHz or 5 GHz depends on how far you are and how you want to use your Wi-Fi.Before we jump into that, one thing we recommend to you is the use of a wired ethernet connection. This means that if you have a device that supports an ethernet connection, make use of that as wired connections dont have to deal with channel interference and offer faster connection and lower latency. They are a bit awkward to set up but in every way are better than wireless connections.2.4 GHz vs 5 GHzIf most of the devices you use are near your router, 5 GHz can be the best choice as youll have the advantage of higher speeds. Gaming, streaming, or other activities that require high bandwidth work much more smoothly when using 5 GHz. On top of that if you are in an apartment or somewhere with a lot of devices, using a 5 GHz frequency band can help you avoid interference and congestion.On the other hand, if you are using your smartphone from the other side of the room, your best bet is to use 2.4 GHz as it offers a greater coverage area. When using the 2.4 GHz band, its ideal to use devices that require low bandwidth like home security systems, garage openers, smartphones, etc.When it comes to changing your frequency settings from 2.4 GHz to 5GHz or vice versa, youll need to make sure your router can act as a Dual or Tri-band router. As its in the name, a dual-band router can broadcast both frequency bands but in two different ways.Dual Band vs Tri-BandSelectable Dual-Band Router: A selectable dual-band router can only use one of the two frequency bands at a time. This means that if you are on 2.4 GHz, youll have to manually switch to the 5 GHz frequency band for it to work.Simultaneous Dual-Band Router: A simultaneous dual-band router has better technology and is capable of broadcasting both 2.4 GHz and 5 GHz at the same time. With this one, youll have two separate networks appear in your network list with identical names except for a 5G or 2.4G at the end. This allows you to individually connect to each network at any time.While simultaneous dual-band routers are a bit more expensive than selectable dual-band routers, their advantage outweighs the cost. Apart from these two, you also have tri-band routers which as you guessed can broadcast three networks simultaneously two 5 GHz signals and one 2.4 GHz signal. So, if you have several devices operating on a 5 GHz network you can benefit from a tri-band router.6 GHz is the newest addition to the Wi-Fi frequency band family and it is supposed to offer faster speeds and less congestion than 5 GHz. While the speed jump from 5 GHz to 6 GHz is not as significant as we saw in 2.4 GHz vs 5 GHz what matters is that with 6 GHz the total available space for data to travel will almost be quadrupled.5 GHz or 6GZ ?To find devices that support the latest frequency, youll have to look for the label Wi-Fi 6E which stands for Wi-Fi 6 extended into the 6 GHz band. However, its important to note that you wont be able to utilize the benefits of 6 GHz even if your device supports it until you buy a Wi-Fi 6E router.All in all, the difference between 2.4 GHz and 5 GHz boils down to speed and coverage area, and choosing between the two depends on your situation. Luckily, if you have a dual-band router, you can enjoy both frequency bands simultaneously. With newer technologies on the rise, its a matter of time before 5 GHz is widely replaced by 6 GHz.What is the history of wireless router technology?Wi-Fi 4 (802.11n) introduced MIMO technology, offering improved range and reliability across both 2.4 GHz and 5 GHz bands. Wi-Fi 5 (802.11ac) further enhanced speeds and efficiency with wider channels and MU-MIMO, operating exclusively on the 5 GHz band. Wi-Fi 6 (802.11ax) builds upon these advancements, introducing OFDMA and operating on both 2.4 GHz and 5 GHz bands, with Wi-Fi 6E utilizing the 6 GHz band for even faster speeds and reduced interference.What is meant by MU-MIMO technology?MU-MIMO stands for Multi-User, Multiple-Input, Multiple-Output. Its a technology used in routers to improve the efficiency of Wi-Fi networks by allowing multiple devices to transmit and receive data simultaneously. MU-MIMO enables concurrent communication with multiple devices, leading to faster and more efficient Wi-Fi connections.What are some popular dual-band routers? Popular dual-band routers like TP-Link Archer AXE75, which is a Wi-Fi 6 router with excellent performance, and the Asus RT-AX86U Pro, designed for gaming enthusiasts. Additionally, the Eero Pro 6E Tri-Band Mesh Wi-Fi System (3-Pack) extends coverage using Wi-Fi 6E technology, while the Linksys Dual-Band AX5400 Wi-Fi 6 Router is great for streaming

**Epson ink pad reset utility l4150. Epson l4150 ink pad reset free download. Epson ink pad reset. Epson ink pad reset free. L4150 ink pad reset. Epson l4150 ink pad resetter. Epson printer resetten. Epson xp 4150 inkt vervangen.**