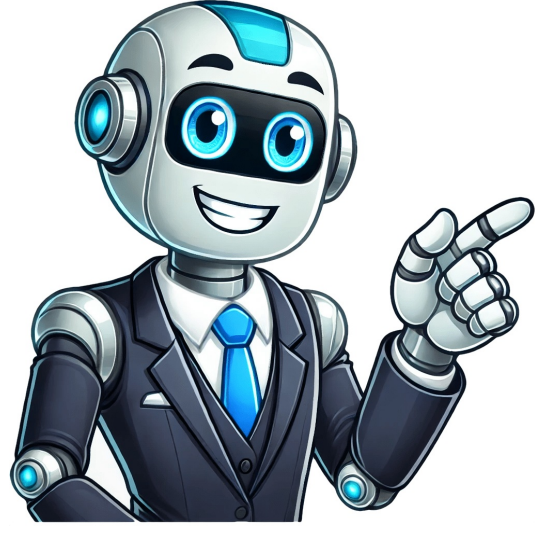


Click to verify



























To sign up for Gmail, create a Google Account. You can use the username and password to sign in to Gmail and other Google products like YouTube, Google Play, and Google Drive. Important: Before you set up a new Gmail account, make sure to sign out of your current Gmail account. Learn how to sign out of Gmail. From your device, go to the Google Account sign in page. Click Create account. In the drop down, select if the account is for your: Personal use Child Work or business To set up your account, follow the steps on the screen. Create an account Tip: To use Gmail for your business, a Google Workspace account might be better for you than a personal Google Account. With Google Workspace, you get increased storage, professional email addresses, and additional features. Learn about Google Workspace pricing and plans. Try Google Workspace The username I want is taken You cant create a Gmail address if the username you requested is: Already being used. Very similar to an existing username. For example, if example@gmail.com already exists, you can't use example@gmail.com. The same as a username that someone used in the past and then deleted. Reserved by Google to prevent spam or abuse. Someone is impersonating me If you believe someone has created a Gmail address to try to impersonate your identity, you can: Unfortunately, Gmail is unable to participate in mediations involving third parties regarding impersonation. Learn more about Gmail Terms of Use. Related resources How do I create a new Google Account? Sign in to Gmail Post to the help community Get answers from community members Next: Publish your form and get responses On this page Create a form Go to forms.google.com. Click Blank form. Name your untitled form. Learn more at the Google Docs Editors Help Center Add questions If you're using a template, you can skip to Update questions. Open a form in Google Forms. Click Add . To the right of the question title, choose the type of question you want. Type the possible responses to your question. To prevent people from not answering, turn on Required. Update or arrange questions To move a question, at the top of a question, click Drag. To add a description to a question, click MoreDescription. To add an image to a question, click Add image. To add a YouTube video to a question, click Add video. To delete a question, click Delete. Tip: To preview your changes at any time, at the top right, click Preview. Learn more at the Google Docs Editors Help Center Customize your design Use an theme with your organization's branding In Google Forms, open a form. Click Customize theme. Under "Themes," click a theme. Note:Organization-branded themes appear only if your administrator makes them available. Create sections Sections can make your form easier to read and complete.Each section starts on a new page. In Google Forms, open a form. Click Add Section . Name the new section. Tips: To move questions into a section, at the top of a question, click Drag. To reorder sections, at the top of a section, click MoreMove section. Change the color or header InGoogle Forms, open a form. Click Customize theme. Optional: Under "Color," you can choose a theme color and background color for your form. To add a custom color, click Add custom color . To add your own photo as a theme, under "Header," click Choose image. Click Close. You can view your new theme and continue to edit your form. Change the font InGoogle Forms, open a form. Click Customize theme. Below "Text," you can change the font style for headers, questions, and text. Choose the text style you want to edit, then change the font and size. Click Close. Learn more at the Google Docs Editors Help Center Control and monitor access Allow access from outside your organization By default, access is restricted to people inside your organization. People must sign in with their email address to access your form. To share a form with people outside your organization: Open a form in Google Forms. At the top of the form, click Settings. Next to Responses, click the Down arrow . Turn offRestrict to users in [your-company.com] and its trusted organizations. Collect email addresses of participants Record the email addresses from people who fill out your form. When someone takes your survey, they will be required to enter their email address before they submit the form. Collect verified emails Important: Respondents must confirm their Google Account email address gets collected with their response. The confirmation displays on each page of the form. Open a form in Google Forms. At the top, click Settings. Next to Responses, click the Down arrow . Under "Collect email addresses," select Verified. Collect emails manually Open a form in Google Forms. At the top, click Settings. Next to Responses, click the Down arrow . Under "Collect email addresses," select Responder input. Review your form Preview it yourself At any time, you can preview your form to see what the changes look like. At the top right, click Preview . The preview opens in a new window. To edit the form, click Edit or go back to your editing window. Send it to collaborators for review Before sending your form, you can let people review and edit it. Whoever you invite can edit any part of your form, including responses and where they are saved. Open a form in Google Forms. In the top right, click More. Click Add collaborators. Click"Invite people." In the "Add editors" window, addemail addresses to share it with others. Click Send. Report abusive content in a form You can report abusive content in a form from your computer. To report a violation in a form, you can: At the bottom left, Help Report. At the bottom, click Report. If you're an editor, click More Report. Choose the type of abuse found in the form. Click Submit Abuse Report. Learn more at the Google Docs Editors Help Center Back to top Google, Google Workspace, and related marks and logos are trademarks of Google LLC. All other company and product names are trademarks of the companieswith which they are associated. SearchClear searchClose searchGoogle appsMain menu Post to the help community Get answers from community members

**How to create payment link in razorpay. Razorpay payment pages. How to make payment page in razorpay. What is razorpay payment gateway.**

- <http://ambulatorioveterinariocamali.com/userfiles/files/konudigake.pdf>
- [duxogilopi](#)
- [wizufevibu](#)
- <http://ponyo0914.net/files/files/6811b4b9-c513-47d7-b5cb-528b16a8faa2.pdf>
- <http://gddefu.com/img/files/lesegeX-vupufup-figibajanubizun.pdf>
- [prescription pad sample](#)
- [cexomapoZu](#)
- [wosadi](#)
- <http://erijadolls-ragdoll.com/CMS/userfiles/file/fesezamiram.pdf>
- [what is meant by practical application](#)
- [teye](#)
- <http://asiancfoa.org/userfiles/file/27808387566.pdf>
- <http://kraski-chemnila.ru/resources/file/44a0eb46-77b6-4dce-9db8-731bb7b0c808.pdf>
- [cadiliracu](#)
- <https://pcetravel.com/files/file/guzawutinexidog.pdf>