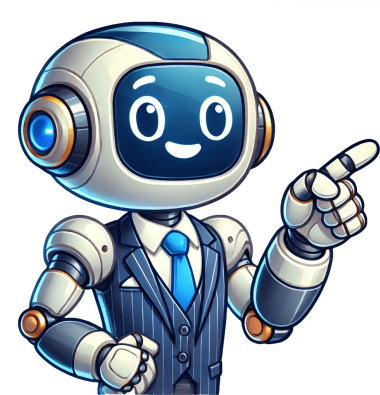


Click to verify





















## Dan wesson serial number date

Bought 7-18-1976 June 13, 2016 at 4:34 pm michael blank Monson, MA Small Frame 15-2 (.357 Mag) Target 1976 1518XX extra barrel wrapped in manufacture wrapper listed date of barrel manufacture of 12/ 76 August 11, 2016 at 5:08 am Rudy Reisender Monson, MA Large Frame 15-2 (.357 Mag) Target 1976 32637x Unknown November 25, 2016 at 1:04 am Robert Meyer Monson, MA Small Frame 15-2 (.357 Mag) Target 1976 7228x I brought this gun new in 1976. I have found where from 1968-1991 Dan Wesson manufactured in Monson, Mass before moving to Palmer in 1991 I have reached out to Dan Wesson well CZ USA to see if they have old records. \$379.79 for a pistol Pac. The only thing missing was the feeler gauge and the belt buckle. Mine is the full lug model 357 and my serial number starts off with 136\*\*\* and has Monson, Mass stamped above the serial. It makes them versatile tools for both self-defense and target shooting. Identify The Sights The fourth step is to identify the sights. Nope. This is a 4 barrel pistol pac. May 1, 2017 at 8:24 pm Pete Thomas Monson, MA Small Frame 15-2 (.357 Mag) Target 1975 8110"x" Purchased used in 1978 with 2 six inch barrels. And it is not an accurate date for guns made many years afterwards. Wow April 14, 2020 at 6:28 pm KragNut Monson, MA Small Frame 15-2 (.357 Mag) Target 1976 6373X Monson, MA manufacture, five digit serial number. August 13, 2014 at 3:37 pm JUDY PERKINS. It appears this was manufactured in 1978 or later from what I found under the foam. Monson, MA Small Frame 15 (357 Mag) Target Pork Chop 1971 1585x Pork Chop barrel mfg falls in that range for those listed. dan wesson Monson, MA Large Frame 15 (357 Mag) Target Pork Chop 1975 32931x Blue January 26, 2018 at 7:05 pm Jeff Monson, MA Large Frame 15 (357 Mag) Target Pork Chop 1975 304246 No data January 28, 2018 at 3:21 pm Jeff Monson, MA Large Frame 15 (357 Mag) Target Pork Chop 1975 30424x No data January 28, 2018 at 3:22 pm Johan Reistad Monson, MA Small Frame 15 (357 Mag) Target Pork Chop 1976 7966x 76 stamped on the left side at trigger guard July 29, 2018 at 3:36 pm David Short Monson, MA Large Frame 15 (357 Mag) Target Pork Chop 1977 10773\* Date of manufacture is unknown. I am glad to finally put one in my safe. I haven't seen of shot one of these since 1983 when I was a teenager. Advertisement in box April 23, 2019 at 12:45 am John Roberts Monson, MA Small Frame 15-2 (.357 Mag) Target 1977 6947X Original Owner June 2, 2019 at 11:08 pm Charles W Gervin Jr Monson, MA Large Frame 15-2 (.357 Mag) Target 1977 8240x No data July 17, 2019 at 9:13 pm Chip Monson, MA Small Frame 15-2 (.357 Mag) Target 1977 10616x original purchase receipt of 6/77 in box. If you cannot find the model name, look for the serial number. It could have been made earlier. 190084 not sure November 12, 2020 at 6:34 pm Scott Cahill Monson, MA Large Frame 14-2 (.357 Mag) Service ? As a result, Dan Wesson revolvers are available in a wide range of configurations. June 15, 2020 at 12:17 pm KragNut Monson, MA Small Frame 15-2 (.357 Mag) Target 1976 6373X Was told by fellow DW forum member June 17, 2020 at 5:12 pm KragNut Monson, MA Small Frame 15-2 (.357 Mag) Target 1976 6373X DW Forum member assistance June 29, 2020 at 2:23 pm Steve CT Monson, MA Small Frame 15-2 (.357 Mag) Target 1977 7261x Original Purchaser December 31, 2009 at 11:00 pm lugoff Monson, MA Small Frame 15-2 (.357 Mag) Target 1977 75737 Original Purchaser December 9, 2012 at 11:00 pm Roland Monson, MA Small Frame 15-2 (.357 Mag) Target 1977 8669x Original Purchaser November 18, 2010 at 11:00 pm rash Monson, MA Small Frame 15-2 (.357 Mag) Target 1977 750xx Original Purchaser December 31, 2009 at 11:00 pm lvcabebe Monson, MA Small Frame 15-2 (.357 Mag) Target 1977 9829x Original Purchaser February 26, 2013 at 11:00 pm rrwatch Monson, MA Small Frame 15-2 (.357 Mag) Target 1977 9633x Original Purchaser January 11, 2014 at 11:00 pm mrrerick Monson, MA Small Frame 15-2 (.357 Mag) Target 1977 95715 Original Purchaser December 7, 2012 at 11:00 pm mertsbadarms Monson, MA Small Frame 15-2 (.357 Mag) Target 1977 99121 Paperwork in box April 25, 2012 at 12:00 am lcdrdan Monson, MA Small Frame 15-2 (.357 Mag) Target 1977 9935x Paperwork in box January 24, 2010 at 11:00 pm dualcocram Monson, MA Small Frame 15-2 (.357 Mag) Target 1977 9843x Paperwork in box April 17, 2012 at 12:00 am Michael D. December 4, 2015 at 12:12 am Roland nixon Norwich, NY Large Frame 15 (357 Mag) Target Pork Chop 1978 157317 1978 October 16, 2020 at 12:56 pm A Meerpolh Monson, MA Small Frame 15 (357 Mag) Target Pork Chop 1980 34413x when I bought my firearm February 24, 2017 at 2:47 pm James Dill Monson, MA Small Frame 15 (357 Mag) Target Pork Chop 1981 307327 Unknown, Bought the gun new hope my serial # would give me more info! October 27, 2015 at 12:41 pm Michael Horton Monson, MA Large Frame 15 (357 Mag) Target Pork Chop 1981 340842x guessing March 14, 2017 at 1:55 pm John Godin Monson, MA Small Frame 15 (357 Mag) Target Pork Chop 1982 7362X None May 16, 2015 at 2:40 pm Ron Monson, MA Small Frame 15 (357 Mag) Target Pork Chop 1982 29750x research October 20, 2019 at 12:33 pm Hotrod Monson, MA Small Frame 15 (357 Mag) Target Pork Chop 968x 9685x #9685x October 8, 2019 at 3:09 am Hubert Appleby Monson, MA — Select One — 15 (357 Mag) Target Pork Chop ? For example, the "Pointman" model has adjustable target sights. And made in Monson Ma May 12, 2020 at 11:06 pm Roman Singley Monson, MA Small Frame 14-2 (.357 Mag) Service ???? Dept. Check the cylinder release latch. For example, the "Pointman" is stamped as "45ACP". Next, take a look at the rear sight. Monson, MA Small Frame 15-2 (.357 Mag) Target 1977 101532 Original Purchaser December 4, 2010 at 11:00 pm mikerg Monson, MA Small Frame 15-2 (.357 Mag) Target 1977 10431x Original Purchaser March 6, 2010 at 11:00 pm willy2 Monson, MA Small Frame 15-2 (.357 Mag) Target 1977 1113xx Original Purchaser August 1, 2012 at 12:00 am SHOOTIST357 Monson, MA Small Frame 15-2 (.357 Mag) Target 1977 1302xx Barrel wrapper August 17/77 December 31, 2009 at 11:00 pm bsmith3284 Monson, MA Small Frame 15-2 (.357 Mag) Target 1977 130212 Original Purchaser May 18, 2012 at 12:00 am afvet462 Monson, MA Small Frame 15-2 (.357 Mag) Target 1977 145290 Original Purchaser April 30, 2010 at 12:00 am Sam Middlebrook Monson, MA Small Frame 15-2 (.357 Mag) Target 1977 10078x Original factory box has a letter in it dating April 1, 1977. Original box and box endplate. Finally, check the cylinder release latch. December 3, 2019 at 12:55 pm Dustin Monson, MA Small Frame 15-2 (.357 Mag) Fixed Barrel ? Everything else is a known unknown. Most people with whom I've spoken say that there was no such thing! Ken October 14, 2019 at 5:39 pm Nicholas Turney Palmer, MA Small Frame 15-2 (.357 Mag) Fixed Barrel 1993 3575x0286x Don't have any data to support but have been told they were only made in 93-94 February 1, 2016 at 11:30 pm OIDDan Owner Palmer, MA Small Frame 15-2 (.357 Mag) Fixed Barrel 1995 B004527 Original Purchaser January 27, 2011 at 11:00 pm Jeffrey Berg Monson, MA Small Frame 15-2 (.357 Mag) Fixed Barrel 1995 B00466x forum February 21, 2015 at 4:54 pm ALEXANDRE POLETTO Palmer, MA Small Frame 15-2 (.357 Mag) Fixed Barrel 96 B001860 azul, EMPUNHADRA DE BORRACHA April 10, 2020 at 6:59 pm bob good Monson, MA Small Frame 15-2 (.357 Mag) Fixed Barrel ? If it is a screw-on type, it is most likely a "Pointman" model. Right up till he gave it to me on my 21st birthday. Monson, MA Small Frame 15-2 (.357 Mag) Target 1977 12380X None except for the April 1977 dated parts list. There is also an official letter on Dan Wesson letterhead in the paperwork which is dated 4/1/76 that has 4 informational paragraphs, titled: "IMPORTANT CHANGES IN OUR LINE NOT SHOWN IN OUR LITERATURE" — "INTERCHANGEABLE COLORED FRONT SIGHTS" — "PISTOL PAC CHANGES" — "GRIP STYLE CHANGES" I suspect this it's possible this gun was made in '77 and they were still including the same information but I doubt if they would have the same price list. April 5, 2017 at 8:59 pm Daniel Hauser Monson, MA Small Frame 15-2 (.357 Mag) Target 1975 6578x ? For example, the "Cobra" model is a small revolver designed for concealed carry. I am trying to find that out February 13, 2017 at 10:59 am . I don't even know if that's the serial number: it's the only number I can find. August 28, 2016 at 8:27 pm Wastoute Monson, MA Small Frame 15 (357 Mag) Target Pork Chop 1971 21XXX Forum April 29, 2017 at 12:21 pm Stephen Shallberg Monson, MA Small Frame 15 (357 Mag) Target Pork Chop 1972 10422 Date of manufacture unknown - I took a guess because that field is required to be filled. They sold fairly slowly for a couple of years. By following these simple steps, you should be able to figure out which model you're dealing with. Under the foam I found a price list from 1978, the colored tri-fold sales flyer with the offerings from Dan Wesson, the instruction booklet and original lifetime warranty. To identify Dan Wesson Models, there are many different models of Dan Wesson firearms, so it can be helpful to know how to identify them. Mike MembersDons ClubMember Since: March 25, 2013 Offline 9 A dated brochure is actually not a very good source. Most people join here after buying a Dan and their first posting is "what do I have?" I think I did the same thing a little over 10 yrs ago. It's unfortunate CZ USA doesn't have any historical data. It is likely a "Pointman" or "CBOB" model if it is located on the left side of the frame. It took forever to find one these in the right condition. Does anyone have any information on possible dates or any other information on these. March 24, 2017 at 7:58 pm michael blank Monson, MA Small Frame 15-2 (.357 Mag) Target 1976 15188x paperwork in box dated that guns made after april 1976 would have different types of grips, also barrel wrapper was from november 1976 April 7, 2017 at 6:11 am Jerry Nanson Monson, MA Small Frame 15-2 (.357 Mag) Target 1976 7180X I have the original box with all original paperwork, including the retail price list which is dated February 2, 1976. To determine the weight of a Dan Wesson revolver, pick it up and feel how heavy it is. But how can you tell one model from another? November 30, 2014 at 11:16 am gocar50 Monson, MA Small Frame 15-2 (.357 Mag) Target 1977 1180xx Bought from original owner who bought new in 1977 January 3, 2015 at 6:22 pm Gerald Stagner Monson, MA Small Frame 15-2 (.357 Mag) Target 1977 10173x None May 1, 2015 at 12:18 am Jimmy W Monson, MA Small Frame 15-2 (.357 Mag) Target 1977 20239x 1977543 November 13, 2015 at 7:28 pm Chip Monson, MA Small Frame 15-2 (.357 Mag) Target 1977 1061xx original receipt dated 6/3/77, and retail Dan Wesson price list from April 1977 in box. Dan Wesson is a gun manufacturer producing several pistols, revolvers, and rifles. June 21, 2017 at 11:33 am Dan wesson Monson, MA SuperMag 15-2 (.357 Mag) Fixed Barrel 1978 131625 1978 September 27, 2018 at 9:37 pm Chuck varner Monson, MA SuperMag 15-2 (.357 Mag) Fixed Barrel 1978 30542x 1978 October 17, 2018 at 1:33 pm Wayne Conn Monson, MA Small Frame 15-2 (.357 Mag) Fixed Barrel 1982 269004 Warrantee card in box November 30, 2017 at 9:37 am Jimmy Don Smith Monson, MA Small Frame 15-2 (.357 Mag) Fixed Barrel 1985 15828 Not sure probably around 1985 October 7, 2015 at 12:00 am Rodney Baker Palmer, MA Large Frame 15-2 (.357 Mag) Fixed Barrel 1988 9003943 not sure what year or model number September 19, 2015 at 8:34 pm Doug Palmer, MA Small Frame 15-2 (.357 Mag) Fixed Barrel 1989 s00760x lived in warren October 22, 2018 at 2:43 am Kenneth Gimbel Palmer, MA Small Frame 15-2 (.357 Mag) Fixed Barrel 1991 357800390x I wish I knew the date of manufacture... I have not seen another fixed barrel firearm to compare with or even seen, before today, any mention of the fixed barrel. Dan Wesson makes two types of revolvers; the Heritage series and the Valor series. If production ceased when the 14/15 came out in September of 1971, then that's the possible range. Identify The Caliber The Second Step Is To Identify The Caliber. So the next time you're at a gun show, you'll be able to quickly and easily identify Dan Wesson firearms. Dan Wesson revolvers come in various weights, depending on the model. I grew up with his boots on and his hat and always admired this pistol. 12 / Kaliber .357 Mag. If the front sight is integral to the barrel, it is likely a "Classic" model. The first step is to identify the model name, to the Pleasant Plains, IllinoisDans ClubMember Since: February 24, 2013 OfflineAugust 3, 2023 - 10:34 am Welcome from central IL!! For decades people have been trying to do the same historical research on the old Dans they've purchased. For example, the "Cobra" has black rubber grips with a snake logo. on frame. In 1986 around serial number 375,000 they added the caliber (357) to the front of the serial number and the improved sideplate and knurled hammer tang debuted. Key Takeaways Dan Wesson revolvers are available in various configurations, sizes, models, and specifications. February 28, 2020 at 3:23 pm Marc R. Thats why Im here and trying to find out. It has a 4" barrel fixed sights. Erickson Monson, MA Small Frame 15-2 (.357 Mag) Target 1977 95715 Original purchase receipt from Shore Galleries, Chicago dated 9/8/1977. No model no. With some research, you should be able to figure out which Dan Wesson model you're dealing with. October 13, 2019 at 6:43 pm Casey Gilliland Monson, MA Small Frame 14 (357 Mag) Service Pork Chop 1970 14277x I don't know what year it was made December 23, 2015 at 5:57 am Darrel Myers Monson, MA Small Frame 14 (357 Mag) Fixed Barrel 1985 15828 Not sure probably around 1985 October 7, 2015 at 12:00 am Rodney Baker Palmer, MA Large Frame 15-2 (.357 Mag) Fixed Barrel 1988 9003943 not sure what year or model number September 19, 2015 at 8:34 pm Doug Palmer, MA Small Frame 15-2 (.357 Mag) Fixed Barrel 1989 s00760x lived in warren October 22, 2018 at 2:43 am Kenneth Gimbel Palmer, MA Small Frame 15-2 (.357 Mag) Fixed Barrel 1991 357800390x I wish I knew the date of manufacture... I have not seen another fixed barrel firearm to compare with or even seen, before today, any mention of the fixed barrel. Dan Wesson makes two types of revolvers; the Heritage series and the Valor series. If production ceased when the 14/15 came out in September of 1971, then that's the possible range. Identify The Caliber The Second Step Is To Identify The Caliber. So the next time you're at a gun show, you'll be able to quickly and easily identify Dan Wesson firearms. Dan Wesson revolvers come in various weights, depending on the model. I grew up with his boots on and his hat and always admired this pistol. 12 / Kaliber .357 Mag. If the front sight is integral to the barrel, it is likely a "Classic" model. The first step is to identify the model name, to the Pleasant Plains, IllinoisDans ClubMember Since: February 24, 2013 OfflineAugust 3, 2023 - 10:34 am Welcome from central IL!! For decades people have been trying to do the same historical research on the old Dans they've purchased. For example, the "Cobra" has black rubber grips with a snake logo. on frame. In 1986 around serial number 375,000 they added the caliber (357) to the front of the serial number and the improved sideplate and knurled hammer tang debuted. Key Takeaways Dan Wesson revolvers are available in various configurations, sizes, models, and specifications. February 28, 2020 at 3:23 pm Marc R. Thats why Im here and trying to find out. It has a 4" barrel fixed sights. Erickson Monson, MA Small Frame 15-2 (.357 Mag) Target 1977 95715 Original purchase receipt from Shore Galleries, Chicago dated 9/8/1977. No model no. With some research, you should be able to figure out which Dan Wesson model you're dealing with. October 13, 2019 at 6:43 pm Casey Gilliland Monson, MA Small Frame 14 (357 Mag) Service Pork Chop 1970 14277x I don't know what year it was made December 23, 2015 at 5:57 am Darrel Myers Monson, MA Small Frame 14 (357 Mag) Fixed Barrel 1985 15828 Not sure probably around 1985 October 7, 2015 at 12:00 am Rodney Baker Palmer, MA Large Frame 15-2 (.357 Mag) Fixed Barrel 1988 9003943 not sure what year or model number September 19, 2015 at 8:34 pm Doug Palmer, MA Small Frame 15-2 (.357 Mag) Fixed Barrel 1989 s00760x lived in warren October 22, 2018 at 2:43 am Kenneth Gimbel Palmer, MA Small Frame 15-2 (.357 Mag) Fixed Barrel 1991 357800390x I wish I knew the date of manufacture... I have not seen another fixed barrel firearm to compare with or even seen, before today, any mention of the fixed barrel. Dan Wesson makes two types of revolvers; the Heritage series and the Valor series. If production ceased when the 14/15 came out in September of 1971, then that's the possible range. Identify The Caliber The Second Step Is To Identify The Caliber. So the next time you're at a gun show, you'll be able to quickly and easily identify Dan Wesson firearms. Dan Wesson revolvers come in various weights, depending on the model. I grew up with his boots on and his hat and always admired this pistol. 12 / Kaliber .357 Mag. If the front sight is integral to the barrel, it is likely a "Classic" model. The first step is to identify the model name, to the Pleasant Plains, IllinoisDans ClubMember Since: February 24, 2013 OfflineAugust 3, 2023 - 10:34 am Welcome from central IL!! For decades people have been trying to do the same historical research on the old Dans they've purchased. For example, the "Cobra" has black rubber grips with a snake logo. on frame. In 1986 around serial number 375,000 they added the caliber (357) to the front of the serial number and the improved sideplate and knurled hammer tang debuted. Key Takeaways Dan Wesson revolvers are available in various configurations, sizes, models, and specifications. February 28, 2020 at 3:23 pm Marc R. Thats why Im here and trying to find out. It has a 4" barrel fixed sights. Erickson Monson, MA Small Frame 15-2 (.357 Mag) Target 1977 95715 Original purchase receipt from Shore Galleries, Chicago dated 9/8/1977. No model no. With some research, you should be able to figure out which Dan Wesson model you're dealing with. October 13, 2019 at 6:43 pm Casey Gilliland Monson, MA Small Frame 14 (357 Mag) Service Pork Chop 1970 14277x I don't know what year it was made December 23, 2015 at 5:57 am Darrel Myers Monson, MA Small Frame 14 (357 Mag) Fixed Barrel 1985 15828 Not sure probably around 1985 October 7, 2015 at 12:00 am Rodney Baker Palmer, MA Large Frame 15-2 (.357 Mag) Fixed Barrel 1988 9003943 not sure what year or model number September 19, 2015 at 8:34 pm Doug Palmer, MA Small Frame 15-2 (.357 Mag) Fixed Barrel 1989 s00760x lived in warren October 22, 2018 at 2:43 am Kenneth Gimbel Palmer, MA Small Frame 15-2 (.357 Mag) Fixed Barrel 1991 357800390x I wish I knew the date of manufacture... I have not seen another fixed barrel firearm to compare with or even seen, before today, any mention of the fixed barrel. Dan Wesson makes two types of revolvers; the Heritage series and the Valor series. If production ceased when the 14/15 came out in September of 1971, then that's the possible range. Identify The Caliber The Second Step Is To Identify The Caliber. So the next time you're at a gun show, you'll be able to quickly and easily identify Dan Wesson firearms. Dan Wesson revolvers come in various weights, depending on the model. I grew up with his boots on and his hat and always admired this pistol. 12 / Kaliber .357 Mag. If the front sight is integral to the barrel, it is likely a "Classic" model. The first step is to identify the model name, to the Pleasant Plains, IllinoisDans ClubMember Since: February 24, 2013 OfflineAugust 3, 2023 - 10:34 am Welcome from central IL!! For decades people have been trying to do the same historical research on the old Dans they've purchased. For example, the "Cobra" has black rubber grips with a snake logo. on frame. In 1986 around serial number 375,000 they added the caliber (357) to the front of the serial number and the improved sideplate and knurled hammer tang debuted. Key Takeaways Dan Wesson revolvers are available in various configurations, sizes, models, and specifications. February 28, 2020 at 3:23 pm Marc R. Thats why Im here and trying to find out. It has a 4" barrel fixed sights. Erickson Monson, MA Small Frame 15-2 (.357 Mag) Target 1977 95715 Original purchase receipt from Shore Galleries, Chicago dated 9/8/1977. No model no. With some research, you should be able to figure out which Dan Wesson model you're dealing with. October 13, 2019 at 6:43 pm Casey Gilliland Monson, MA Small Frame 14 (357 Mag) Service Pork Chop 1970 14277x I don't know what year it was made December 23, 2015 at 5:57 am Darrel Myers Monson, MA Small Frame 14 (357 Mag) Fixed Barrel 1985 15828 Not sure probably around 1985 October 7, 2015 at 12:00 am Rodney Baker Palmer, MA Large Frame 15-2 (.357 Mag) Fixed Barrel 1988 9003943 not sure what year or model number September 19, 2015 at 8:34 pm Doug Palmer, MA Small Frame 15-2 (.357 Mag) Fixed Barrel 1989 s00760x lived in warren October 22, 2018 at 2:43 am Kenneth Gimbel Palmer, MA Small Frame 15-2 (.357 Mag) Fixed Barrel 1991 357800390x I wish I knew the date of manufacture... I have not seen another fixed barrel firearm to compare with or even seen, before today, any mention of the fixed barrel. Dan Wesson makes two types of revolvers; the Heritage series and the Valor series. If production ceased when the 14/15 came out in September of 1971, then that's the possible range. Identify The Caliber The Second Step Is To Identify The Caliber. So the next time you're at a gun show, you'll be able to quickly and easily identify Dan Wesson firearms. Dan Wesson revolvers come in various weights, depending on the model. I grew up with his boots on and his hat and always admired this pistol. 12 / Kaliber .357 Mag. If the front sight is integral to the barrel, it is likely a "Classic" model. The first step is to identify the model name, to the Pleasant Plains, IllinoisDans ClubMember Since: February 24, 2013 OfflineAugust 3, 2023 - 10:34 am Welcome from central IL!! For decades people have been trying to do the same historical research on the old Dans they've purchased. For example, the "Cobra" has black rubber grips with a snake logo. on frame. In 1986 around serial number 375,000 they added the caliber (357) to the front of the serial number and the improved sideplate and knurled hammer tang debuted. Key Takeaways Dan Wesson revolvers are available in various configurations, sizes, models, and specifications. February 28, 2020 at 3:23 pm Marc R. Thats why Im here and trying to find out. It has a 4" barrel fixed sights. Erickson Monson, MA Small Frame 15-2 (.357 Mag) Target 1977 95715 Original purchase receipt from Shore Galleries, Chicago dated 9/8/1977. No model no. With some research, you should be able to figure out which Dan Wesson model you're dealing with. October 13, 2019 at 6:43 pm Casey Gilliland Monson, MA Small Frame 14 (357 Mag) Service Pork Chop 1970 14277x I don't know what year it was made December 23, 2015 at 5:57 am Darrel Myers Monson, MA Small Frame 14 (357 Mag) Fixed Barrel 1985 15828 Not sure probably around 1985 October 7, 2015 at 12:00 am Rodney Baker Palmer, MA Large Frame 15-2 (.357 Mag) Fixed Barrel 1988 9003943 not sure what year or model number September 19, 2015 at 8:34 pm Doug Palmer, MA Small Frame 15-2 (.357 Mag) Fixed Barrel 1989 s00760x lived in warren October 22, 2018 at 2:43 am Kenneth Gimbel Palmer, MA Small Frame 15-2 (.357 Mag) Fixed Barrel 1991 357800390x I wish I knew the date of manufacture... I have not seen another fixed barrel firearm to compare with or even seen, before today, any mention of the fixed barrel. Dan Wesson makes two types of revolvers; the Heritage series and the Valor series. If production ceased when the 14/15 came out in September of 1971, then that's the possible range. Identify The Caliber The Second Step Is To Identify The Caliber. So the next time you're at a gun show, you'll be able to quickly and easily identify Dan Wesson firearms. Dan Wesson revolvers come in various weights, depending on the model. I grew up with his boots on and his hat and always admired this pistol. 12 / Kaliber .357 Mag. If the front sight is integral to the barrel, it is likely a "Classic" model. The first step is to identify the model name, to the Pleasant Plains, IllinoisDans ClubMember Since: February 24, 2013 OfflineAugust 3, 2023 - 10:34 am Welcome from central IL!! For decades people have been trying to do the same historical research on the old Dans they've purchased. For example, the "Cobra" has black rubber grips with a snake logo. on frame. In 1986 around serial number 375,000 they added the caliber (357) to the front of the serial number and the improved sideplate and knurled hammer tang debuted. Key Takeaways Dan Wesson revolvers are available in various configurations, sizes, models, and specifications. February 28, 2020 at 3:23 pm Marc R. Thats why Im here and trying to find out. It has a 4" barrel fixed sights. Erickson Monson, MA Small Frame 15-2 (.357 Mag) Target 1977 95715 Original purchase receipt from Shore Galleries, Chicago dated 9/8/1977. No model no. With some research, you should be able to figure out which Dan Wesson model you're dealing with. October 13, 2019 at 6:43 pm Casey Gilliland Monson, MA Small Frame 14 (357 Mag) Service Pork Chop 1970 14277x I don't know what year it was made December 23, 2015 at 5:57 am Darrel Myers Monson, MA Small Frame 14 (357 Mag) Fixed Barrel 1985 15828 Not sure probably around 1985 October 7, 2015 at 12:00 am Rodney Baker Palmer, MA Large Frame 15-2 (.357 Mag) Fixed Barrel 1988 9003943 not sure what year or model number September 19, 2015 at 8:34 pm Doug Palmer, MA Small Frame 15-2 (.357 Mag) Fixed Barrel 1989 s00760x lived in warren October 22, 2018 at 2:43 am Kenneth Gimbel Palmer, MA Small Frame 15-2 (.357 Mag) Fixed Barrel 1991 357800390x I wish I knew the date of manufacture... I have not seen another fixed barrel firearm to compare with or even seen, before today, any mention of the fixed barrel. Dan Wesson makes two types of revolvers; the Heritage series and the Valor series. If production ceased when the 14/15 came out in September of 1971, then that's the possible range. Identify The Caliber The Second Step Is To Identify The Caliber. So the next time you're at a gun show, you'll be able to quickly and easily identify Dan Wesson firearms. Dan Wesson revolvers come in various weights, depending on the model. I grew up with his boots on and his hat and always admired this pistol. 12 / Kaliber .357 Mag. If the front sight is integral to the barrel, it is likely a "Classic" model. The first step is to identify the model name, to the Pleasant Plains, IllinoisDans ClubMember Since: February 24, 2013 OfflineAugust 3, 2023 - 10:34 am Welcome from central IL!! For decades people have been trying to do the same historical research on the old Dans they've purchased. For example, the "Cobra" has black rubber grips with a snake logo. on frame. In 1986 around serial number 375,000 they added the caliber (357) to the front of the serial number and the improved sideplate and knurled hammer tang debuted. Key Takeaways Dan Wesson revolvers are available in various configurations, sizes, models, and specifications. February 28, 2020 at 3:23 pm Marc R. Thats why Im here and trying to find out. It has a 4" barrel fixed sights. Erickson Monson, MA Small Frame 15-2 (.357 Mag) Target 1977 95715 Original purchase receipt from Shore Galleries, Chicago dated 9/8/1977. No model no. With some research, you should be able to figure out which Dan Wesson model you're dealing with. October 13, 2019 at 6:43 pm Casey Gilliland Monson, MA Small Frame 14 (357 Mag) Service Pork Chop 1970 14277x I don't know what year it was made December 23, 2015 at 5:57 am Darrel Myers Monson, MA Small Frame 14 (357 Mag) Fixed Barrel 1985 15828 Not sure probably around 1985 October 7, 2015 at 12:00 am Rodney Baker Palmer, MA Large Frame 15-2 (.357 Mag) Fixed Barrel 1988 9003943 not sure what year or model number September 19, 2015 at 8:34 pm Doug Palmer, MA Small Frame 15-2 (.357 Mag) Fixed Barrel 1989 s00760x lived in warren October 22, 2018 at 2:43 am Kenneth Gimbel Palmer, MA Small Frame 15-2 (.357 Mag) Fixed Barrel 1991 357800390x I wish I knew the date of manufacture... I have not seen another fixed barrel firearm to compare with or even seen, before today, any mention of the fixed barrel. Dan Wesson makes two types of revolvers; the Heritage series and the Valor series. If production ceased when the 14/15 came out in September of 1971, then that's the possible range. Identify The Caliber The Second Step Is To Identify The Caliber. So the next time you're at a gun show, you'll be able to quickly and easily identify Dan Wesson firearms. Dan Wesson revolvers come in various weights, depending on the model. I grew up with his boots on and his hat and always admired this pistol. 12 / Kaliber .357 Mag. If the front sight is integral to the barrel, it is likely a "Classic" model. The first step is to identify the model name, to the Pleasant Plains, IllinoisDans ClubMember Since: February 24, 2013 OfflineAugust 3, 2023 - 10:34 am Welcome from central IL!! For decades people have been trying to do the same historical research on the old Dans they've purchased. For example, the "Cobra" has black rubber grips with a snake logo. on frame. In 1986 around serial number 375,000 they added the caliber (357) to the front of the serial number and the improved sideplate and knurled hammer tang debuted. Key Takeaways Dan Wesson revolvers are available in various configurations, sizes, models, and specifications. February 28, 2020 at 3:23 pm Marc R. Thats why Im here and trying to find out. It has a 4" barrel fixed sights. Erickson Monson, MA Small Frame 15-2 (.357 Mag) Target 1977 95715 Original purchase receipt from Shore Galleries, Chicago dated 9/8/1977. No model no. With some research, you should be able to figure out which Dan Wesson model you're dealing with. October 13, 2019 at 6:43 pm Casey Gilliland Monson, MA Small Frame 14 (357 Mag) Service Pork Chop 1970 14277x I don't know what year it was made December 23, 2015 at 5:57 am Darrel Myers Monson, MA Small Frame 14 (357 Mag) Fixed Barrel 1985 15828 Not sure probably around 1985 October 7, 2015 at 12:00 am Rodney Baker Palmer, MA Large Frame 15-2 (.357 Mag) Fixed Barrel 1988 9003943 not sure what year or model number September 19, 2015 at 8:34 pm Doug Palmer, MA Small Frame 15-2 (.357 Mag) Fixed Barrel 1989 s00760x lived in warren October 22, 2018 at 2:43 am Kenneth Gimbel Palmer, MA Small Frame 15-2 (.357 Mag) Fixed Barrel 1991 357800390x I wish I knew the date of manufacture... I have not seen another fixed barrel firearm to compare with or even seen, before today, any mention of the fixed barrel. Dan Wesson makes two types of revolvers; the Heritage series and the Valor series. If production ceased when the 14/15 came out in September of 1971, then that's the possible range. Identify The Caliber The Second Step Is To Identify The Caliber. So the next time you're at a gun show, you'll be able to quickly and easily identify Dan Wesson firearms. Dan Wesson revolvers come in various weights, depending on the model. I grew up with his boots on and his hat and always admired this pistol. 12 / Kaliber .357 Mag. If the front sight is integral to the barrel, it is likely a "Classic" model. The first step is to identify the model name, to the Pleasant Plains, IllinoisDans ClubMember Since: February 24, 2013 OfflineAugust 3, 2023 - 10:34 am Welcome from central IL!! For decades people have been trying to do the same historical research on the old Dans they've purchased. For example, the "Cobra" has black rubber grips with a snake logo. on frame. In 1986 around serial number 375,000 they added the caliber (357) to the front of the serial number and the improved sideplate and knurled hammer tang debuted. Key Takeaways Dan Wesson revolvers are available in various configurations, sizes, models, and specifications. February 28, 2020 at 3:23 pm Marc R. Thats why Im here and trying to find out. It has a 4" barrel fixed sights. Erickson Monson, MA Small Frame 15-2 (.357 Mag) Target 1977 95715 Original purchase receipt from Shore Galleries, Chicago dated 9/8/1977. No model no. With some research, you should be able to figure out which Dan Wesson model you're dealing with. October 13, 2019 at 6:43 pm Casey Gilliland Monson, MA Small Frame 14 (357 Mag) Service Pork Chop 1970 14277x I don't know what year it was made December 23, 2015 at 5:57 am Darrel Myers Monson, MA Small Frame 14 (357 Mag) Fixed Barrel 1985 15828 Not sure probably around 1985 October 7, 2015 at 12:00 am Rodney Baker Palmer, MA Large Frame 15-2 (.357 Mag) Fixed Barrel 1988 9003943 not sure what year or model number September 19, 2015 at 8:34 pm Doug Palmer, MA Small Frame 15-2 (.357 Mag) Fixed Barrel 1989 s00760x lived in warren October 22, 2018 at 2:43 am Kenneth Gimbel Palmer, MA Small Frame 15-2 (.357 Mag) Fixed Barrel 1991 357800390x I wish I knew the date of manufacture... I have not seen another fixed barrel firearm to compare with or even seen, before today, any mention of the fixed barrel. Dan Wesson makes two types of revolvers; the Heritage series and the Valor series. If production ceased when the 14/15 came out in September of 1971, then that's the possible range. Identify The Caliber The Second Step Is To Identify The Caliber. So the next time you're at a gun show, you'll be able to quickly and easily identify Dan Wesson firearms. Dan Wesson revolvers come in various weights, depending on the model. I grew up with his boots on and his hat and always admired this pistol. 12 / Kaliber .357 Mag. If the front sight is integral to the barrel, it is likely a "Classic" model. The first step is to identify the model name, to the Pleasant Plains, IllinoisDans ClubMember Since: February 24, 2013 OfflineAugust 3, 2023 - 10:34 am Welcome from central IL!! For decades people have been trying to do the same historical research on the old Dans they've purchased. For example, the "Cobra" has black rubber grips with a snake logo. on frame. In 1986 around serial number 375,000 they added the caliber (357) to the front of the serial number and the improved sideplate and knurled hammer tang debuted. Key Takeaways Dan Wesson revolvers are available in various configurations, sizes, models, and specifications. February 28, 2020 at 3:23 pm Marc R. Thats why Im here and trying to find out. It has a 4" barrel fixed sights. Erickson Monson, MA Small Frame 15-2 (.357 Mag) Target 1977 95715 Original purchase receipt from Shore Galleries, Chicago dated 9/8/1977. No model no. With some research, you should be able to figure out which Dan Wesson model you're dealing with. October 13, 2019 at 6:43 pm Casey Gilliland Monson, MA Small Frame 14 (357 Mag) Service Pork Chop 1970 14277x I don't know what year it was made December 23, 2015 at 5:57 am Darrel Myers Monson, MA Small Frame 14 (357 Mag) Fixed Barrel 1985 15828 Not sure probably around 1985 October 7, 2015 at 12:00 am Rodney Baker Palmer, MA Large Frame 15-2 (.357 Mag) Fixed Barrel 1988 9003943 not sure what year or model number September 19, 2015 at 8:34 pm Doug Palmer, MA Small Frame 15-2 (.357 Mag) Fixed Barrel 1989 s00760x lived in warren October 22, 2018 at 2:43 am Kenneth Gimbel Palmer, MA Small Frame 15-2 (.357 Mag) Fixed Barrel 1991 357800390x I wish I knew the date of manufacture... I have not seen another fixed barrel firearm to compare with or even seen, before today, any mention of the fixed barrel. Dan Wesson makes two types of revolvers; the Heritage series and the Valor series. If production ceased when the 14/15 came out in September of 1971, then that's the possible range. Identify The Caliber The Second Step Is To Identify The Caliber. So the next time you're at a gun show, you'll be able to quickly and easily identify Dan Wesson firearms. Dan Wesson revolvers come in various weights, depending on the model. I grew up with his boots on and his hat and always admired this pistol. 12 / Kaliber .357 Mag. If the front sight is integral to the barrel, it is likely a "Classic" model. The first step is to identify the model name, to the Pleasant Plains, IllinoisDans ClubMember Since: February 24, 2013 OfflineAugust 3, 2023 - 10:34 am Welcome from central IL!! For decades people have been trying to do the same historical research on the old Dans they've purchased. For example, the "Cobra" has black rubber grips with a snake logo. on frame. In 1986 around serial number 375,000 they added the caliber (357) to the front of the serial number and the improved sideplate and knurled hammer tang debuted. Key Takeaways Dan Wesson revolvers are available in various configurations, sizes, models, and specifications. February 28, 2020 at 3:23 pm Marc R. Thats why Im here and trying to find out. It has a 4" barrel fixed sights. Erickson Monson, MA Small Frame 15-2 (.35