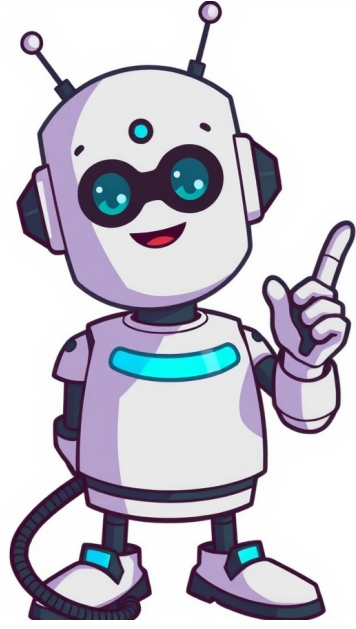


Continue



To upgrade from the legacy free edition of GSuite, go here instead. You can transition your GSuite or Google Workspace subscription to Business Standard edition. What to know before you switch editions Everyone in your organization gets the same subscription. For example, you cant transition some users to Business Plus while others keep using the Business Standard edition. If youre upgrading and your current subscription is on the Annual/Fixed-Term Plan with yearly payments, you can switch only to the Annual/Fixed-Term Plan with monthly payments. After you switch, you get a prorated credit for any remaining yearly subscription balance. Only organizations with 300 or fewer users can switch from an Enterprise edition to a Business edition. If you switch editions during your free trial, any unused days apply to your new subscription. For example, if you switch editions on the 10th day of your free trial, the last 4 days of the free trial apply to the new subscription. If you downgrade your edition and lose a feature, such as data loss prevention (DLP) or Google Vault, you can get the feature back if you upgrade within 51 days. Otherwise, you need to wait at least 85 days to upgrade to an edition with the feature. What features will I lose? ExpandsectionCollapse all & go to top If you're already an administrator for a GSuite or Google Workspace account, sign in now to compare features across available editions: Sign in to your account (doesn't end in gmail.com). Upgrade to Business Standard Supported editions: Frontline Starter, Business Starter, all G Suite editions To upgrade from Frontline Standard or Frontline Plus, contact Google Sales. If you have Google Vault, make sure you dont accidentally lose data. Before upgrading, follow these steps. Sign in with a superadministrator account to the GoogleAdminconsole.If you arent using a super administrator account, you cant complete these steps. Next to the edition that you want to switch to, click UpgradeorSwitch. Review the impact that this change will have and click Next. If your current subscription is on the Flexible Plan, select a payment plan for your new subscription: Flexible planNo long-term commitment, pay for the users that you have each month, and add or remove users as needed. Annual plan (monthly payment)Requires a one-year contract. Pay a monthly usercommitmentand add users as needed. To increase the number of users, enter a new number for Total users. The Annual Plan isnt available when you downgrade to a lower-level edition. If your current subscription is on the Annual Plan (yearly or monthly payments), select Annual plan (monthly payment) as the payment plan for your new subscription. (Optional) To add a promotional code, forFlexible plan, click Add promotion code and enter the code. Click CheckoutPlace Order. If you previously purchased Drive storage or Google Vault licenses: In some cases, these licenses for Drive storage and Vault may remain assigned after you switch editions. To avoid charges for these licenses, check and remove any individual Drive and Vault licenses from users who still have them assigned after the transition. Downgrade to Business Standard Supported editions: Business Plus, all Enterprise editions, Enterprise Essentials and Enterprise Essentials Plus Sign in with a superadministrator account to the GoogleAdminconsole.If you arent using a super administrator account, you cant complete these steps. Click your subscriptionMore Downgradethe edition you want to switch to. Review the impact that this change will have and click Next. If your current subscription is on the Flexible Plan, select a payment plan for your new subscription: Flexible planNo long-term commitment, pay for the users that you have each month, and add or remove users as needed. Annual plan (monthly payment)Requires a one-year contract. Pay a monthly usercommitmentand add users as needed. To increase the number of users, enter a new number for Total users. The Annual Plan isnt available when you downgrade to a lower-level edition. If your current subscription is on the Annual Plan (yearly or monthly payments), select Annual plan (monthly payment) as the payment plan for your new subscription. (Optional) To add a promotional code, forFlexible plan, click Add promotion code and enter the code. Click CheckoutPlace Order. The transformation of agriculture entails developing a robust sector that has mainstreamed mechanisms of reducing vulnerability of, and maintaining and increasing the resilience of farmers and farming systems to negative climate change impacts. By The Standard Jan. 23, 2022 Page 2 The mining activities, carried out by a local firm, Toronto Mining Company in partnership with a Chinese firm, have drawn fierce resistance from residents who fear the mountain will collapse onto their homes. Mutare residents living on the foothills of the Christmas Pass escarpment in Toronto and Penhalonga just outside the eastern city, say they are living on time as huge boulders and loose rocks crash down the slopes each time miners blast and excavate for gold at the mountains peak. The mining activities, carried out by a local firm, Toronto Mining Company in partnership with a Chinese firm, have drawn fierce resistance from residents who fear the mountain will collapse onto their homes. However, despite the dangers, desperate villagers still gather at the base of the hill, dodging falling stones as they scramble to collect freshly dug ore they believe contains traces of gold, investigations by Truth Diggers revealed. Across the country, locals are increasingly at loggerheads with foreign investors in mining, accused of destroying protected landscapes and pushing communities into danger. In Shurugwi mining activities, mainly by Chinese firms, have also taken a toll on the flora and fauna in the Boterekwa escarpment. Once an emblematic landmark for the Midlands province, Boterekwa is experiencing significant environmental degradation and physical destruction due to extensive gold mining activities. The same can be said of a range of mountains in Makaha, Mudzi district that have also suffered at the hands of Chinese miners. Christmas Pass, a natural mountain range that rises above Mutare, has turned out to be the latest casualty. The range of mountains holds monumental cultural and historical value to both government and locals. For decades, Christmas Pass has stood intact, as a symbolic entry point into the eastern border city and one of Zimbabwe's most distinctive natural features. At the foothill of one of the mountains, sits the Toronto residential area, a posh suburb under Mutasa Rural District Council. However, residents say the mining activities have altered the landscape. Truth Diggers observed widespread tree cutting, the digging of deep trenches along the slopes and the removal of large sections of the mountains side, leaving it visibly disfigured. Massive heaps of loose soil and rock have formed mine dumps below the excavation site, and residents fear these could turn into dangerous mudslides once it starts raining. Residents biggest concern is that continued excavation could destabilise the mountains foundation. With the rains approaching, villagers say loose soil and debris could be washed into homesteads or trigger a landslide capable of wiping out homes. Many in the community say they are living in fear, uncertain whether the mountain will hold. One villager, Edna Tambara (60), said economic hardships have forced many villagers, mainly women, to risk their lives as illegal gold panners at the foot of the mountain. She said they wait for the moment miners extract out ore from the mountain summit, waiting for the rocks and ore to tumble down. Even though they are aware of the dangers, they scramble to catch the falling rocks and ore, hoping they contain some gold to earn them some money. We know we can die any day, but we have no choice, Tambara said. When they dig at the top, and the excavator brings out the ore, the stones start falling. We stand there dodging them, waiting for the pieces of ore and as soon as they hit the ground, we grab them and run. After that, we take them for processing and that is how we survive. If we dont do it, our children will sleep hungry. Another villager Tatenda Tinesi (29) said the mining has cut communities off from natural resources in the mountain, which they relied on for generations. She said locals were no longer allowed to walk into the mountain, which they used to gather firewood, pick wild fruits or mushrooms. We have always survived from that mountain, Tinesi said. We used to get firewood, fruits and mushrooms there, but now we are chased away. Women are the ones who carry the burden of finding firewood and feeding families, and this mining has made our lives harder. The miners release dogs on us if we try to go up. Sometimes our children sneak in to look for fruits, but there are deep trenches everywhere. We fear one day a child will fall in and die. Another villager Daniel Mukungurwe said even livestock are now at risk as cattle and goats used to graze freely on the mountain slopes. He said the deep pits and open trenches left by miners have become death traps. Our livestock used to go up the mountain for pasture, he said. Now there are holes and trenches everywhere. If a cow falls in, it is gone. We have already lost goats. The miners dont fence the pits; they just dig and leave them open. We are losing our livestock and no one cares. Truth Diggers gathered that the Toronto Mining Company recently ceased operations temporarily after residents voiced its failure to produce an environmental impact assessment (EIA) certificate from the Environmental Management Agency (EMA). Community members argued that consultations for the EIA were deliberately flawed, alleging that a meeting was abruptly announced on October 22, 2025 without clear information on who had called it and why. They believe the move was intended to exclude most residents from participating or raising objections. Hellen Gutu (36), a resident in the area, questioned why authorities allowed the mining to commence despite the dangers. Gutu said residents initially believed the extraction would last only a few days, but the operations continued and the risks increased. We thought it was just a short project, but it kept going, she said. Every day we saw rocks falling from the digging. There are huge piles of soil dumped on the slopes. When heavy rains come, all that soil will be washed into our neighbourhood and our homes. We dont understand why the government allowed this when it is clear people are in danger. Among the most affected institutions is Hillcrest Group of Schools, which sits directly below the mountain. The school authorities have raised fears over possible contamination of water bodies used by learners, as well as the threat of mudslides during the rainy season. Officials say the loose soil and waste from mining activities could easily be swept down into the school grounds, endangering pupils and staff. We are concerned about what is going to happen to the quality of our water if the mining persists, Hillcrest principal Sarah Shoesmith told Truth Diggers. Hillcrest schools have been in consultation with stakeholders to try and understand what is going on there. We have our concern with regards to the environmental impact. We want to understand why it has not been controlled. EMAs environmental, education and publicity manager Amkela Sidange requested questions in writing, but had not yet responded by the time of going to print Farai Maguwu, director of the Centre for Natural Resources and Governance (CNRG), warned that the mining operations at Christmas Pass pose serious threats to both residents and the environment. He further warned that the mountain range is ecologically sensitive, intersecting two municipalities and surrounding multiple residential areas, including Murambi, Fairbridge, and Florida. Clearing forests for mining in the age of climate change exposes people to flash floods and other environmental hazards, Maguwu said. When we say we need to protect the environment, we are not being sympathetic to rocks and trees. Human lives are not recoverable once they are lost. Opening Christmas Pass to Chinese mining companies risks lives and destroys the mountain. Residents of Toronto must speak out about their fears and concerns before its too late. Maguwu also criticised political support for the project, describing it as the highest form of irresponsibility and called on government authorities to intervene. The Centre for Research and Development (CRD) also condemned what it described as the illegal mining activities carried out by foreign investors at Christmas Pass in Mutare. The decision to allow any form of mining in such a sensitive ecological and cultural area shows a complete disregard for environmental protection and public interest, CRD director James Mupfumi said. CRD questions how government authorities could approve or tolerate a mining project at Christmas Pass. This area should have been declared a no-go zone for extractive activities due to its environmental, cultural, and residential importance. CRD further demands that the company responsible expediently rehabilitate the damaged site and bear all costs of environmental restoration, as required under Zimbabwe's environmental laws. Manicaland Provincial Affairs and Devolution minister Misheck Mugadza said as the government, they don't want the excavation that is happening on the mountains. Those who were excavating were ordered to rehabilitate the mountain. If they dont do that, we are on them, Mugadza said. The authorised mining on that mountain is shaft mining. It doesn't damage the environment. But then they changed and started excavating. That is the problem, and we stopped them through EMA. They can continue mining after rehabilitation, but as long as they are doing shaft mining, no one would stop them. You won't even see the shaft. Over the years, there has been shaft mining, but no one was noticing. They must simply rehabilitate and put the mountain back to its former state. "This article was produced by Truth Diggers, an investigative journalism unit under Alpha Media Holdings (AMH), publishers of NewsDay, Zim Independent, The Standard and Southern Eye. AMH also operates an online broadcasting channel, H&Stv. Related Topics Misheck Mugadza EMA. Du kan f resultater fra Google, hver gang du sger, ved at gre Google til din standardsgemaskine. Angiv Google som standard i din browser Hvis din browser ikke er angivet nedenfor, kan du g til Hjlp til browseren for at f oplysninger om ndring af spejndstillinger. Google Chrome bn Google Chrome. verset til hjre skal du klikke p Mere Indstillinger. Du kan ogs angive chrome//settings i adresselinjen. Tip! Hvis der er en tilgngelig Chrome-opdatering, kan du finde Opdater verset til hjre. Klik p Opdater Indstillinger. Vlg Google under "Sgemaskine". bn Chrome-appen. verset til hjre skal du trykke p Mere Indstillinger. Under "Grundlggende" skal du trykke p Sgemaskine Google. bn Chrome-appen. Tryk p Mere Indstillinger. Tryk p Sgemaskine Google. Microsoft Edge bn Microsoft Edge. verset til hjre skal du klikke p Indstillinger med mere Indstillinger. Klik p Privativt, sgning og tjenester til venstre. Rul ned til "Tjenerster". Klik p Adresselinje og Sgning. Klik p Google i rullemenuen "Sgemaskine, der bruges i adresselinjen". Klik p Adresselinje i rullemenuen Hillcrest Group of Schools, which sits directly below the mountain. The school authorities have raised fears over possible contamination of water bodies used by learners, as well as the threat of mudslides during the rainy season. Officials say the loose soil and waste from mining activities could easily be swept down into the school grounds, endangering pupils and staff. We are concerned about what is going to happen to the quality of our water if the mining persists, Hillcrest principal Sarah Shoesmith told Truth Diggers. Hillcrest schools have been in consultation with stakeholders to try and understand what is going on there. We have our concern with regards to the environmental impact. We want to understand why it has not been controlled. EMAs environmental, education and publicity manager Amkela Sidange requested questions in writing, but had not yet responded by the time of going to print Farai Maguwu, director of the Centre for Natural Resources and Governance (CNRG), warned that the mining operations at Christmas Pass pose serious threats to both residents and the environment. He further warned that the mountain range is ecologically sensitive, intersecting two municipalities and surrounding multiple residential areas, including Murambi, Fairbridge, and Florida. Clearing forests for mining in the age of climate change exposes people to flash floods and other environmental hazards, Maguwu said. When we say we need to protect the environment, we are not being sympathetic to rocks and trees. Human lives are not recoverable once they are lost. Opening Christmas Pass to Chinese mining companies risks lives and destroys the mountain. Residents of Toronto must speak out about their fears and concerns before its too late. Maguwu also criticised political support for the project, describing it as the highest form of irresponsibility and called on government authorities to intervene. The Centre for Research and Development (CRD) also condemned what it described as the illegal mining activities carried out by foreign investors at Christmas Pass in Mutare. The decision to allow any form of mining in such a sensitive ecological and cultural area shows a complete disregard for environmental protection and public interest, CRD director James Mupfumi said. CRD questions how government authorities could approve or tolerate a mining project at Christmas Pass. This area should have been declared a no-go zone for extractive activities due to its environmental, cultural, and residential importance. CRD further demands that the company responsible expediently rehabilitate the damaged site and bear all costs of environmental restoration, as required under Zimbabwe's environmental laws. Manicaland Provincial Affairs and Devolution minister Misheck Mugadza said as the government, they don't want the excavation that is happening on the mountains. Those who were excavating were ordered to rehabilitate the mountain. If they dont do that, we are on them, Mugadza said. The authorised mining on that mountain is shaft mining. It doesn't damage the environment. But then they changed and started excavating. That is the problem, and we stopped them through EMA. They can continue mining after rehabilitation, but as long as they are doing shaft mining, no one would stop them. You won't even see the shaft. Over the years, there has been shaft mining, but no one was noticing. They must simply rehabilitate and put the mountain back to its former state. "This article was produced by Truth Diggers, an investigative journalism unit under Alpha Media Holdings (AMH), publishers of NewsDay, Zim Independent, The Standard and Southern Eye. AMH also operates an online broadcasting channel, H&Stv. Related Topics Misheck Mugadza EMA. Du kan f resultater fra Google, hver gang du sger, ved at gre Google til din standardsgemaskine. Angiv Google som standard i din browser Hvis din browser ikke er angivet nedenfor, kan du g til Hjlp til browseren for at f oplysninger om ndring af spejndstillinger. Google Chrome bn Google Chrome. verset til hjre skal du klikke p Mere Indstillinger. Du kan ogs angive chrome//settings i adresselinjen. Tip! Hvis der er en tilgngelig Chrome-opdatering, kan du finde Opdater verset til hjre. Klik p Opdater Indstillinger. Vlg Google under "Sgemaskine". bn Chrome-appen. verset til hjre skal du trykke p Mere Indstillinger. Under "Grundlggende" skal du trykke p Sgemaskine Google. bn Chrome-appen. Tryk p Mere Indstillinger. Tryk p Sgemaskine Google. Microsoft Edge bn Microsoft Edge. verset til hjre skal du klikke p Indstillinger med mere Indstillinger. Klik p Privativt, sgning og tjenester til venstre. Rul ned til "Tjenerster". Klik p Adresselinje og Sgning. Klik p Google i rullemenuen "Sgemaskine, der bruges i adresselinjen". Klik p Adresselinje i rullemenuen "Sgning p nye faner bruger sgefelt eller adresselinje". Internet Explorer 8 og nyere Tip! Du kan se, hvilken version af Internet Explorer du bruger, ved at klikke p Hjlp Om Internet Explorer. Internet Explorer 11 bn Internet Explorer. Klik p Tandhjulsikonet verset til hjre. Klik p Administrer tilfelsesprogrammer. Klik p Find flere vrktslinjer og udvidelser nederst p siden. Rul ned til Google Sgning-udvidelsen. Klik p Tilfj. Bekrft ved at klikke p Tilfj igen. Klik p Tandhjulsikonet verset til hjre. Klik p Administrer tilfelsesprogrammer. Til venstre under "Typer af tilfelsesprogrammer" skal du klikke p Sgemaskiner. Klik p Google Sgning til hjre. Klik p Angiv som standard nederst p siden. Internet Explorer 10 bn Internet Explorer. Klik p Tandhjulsikonet verset til hjre p siden. Klik p Administrer tilfelsesprogrammer. Klik p Sgemaskiner til venstre p siden. Klik p Find flere sgemaskiner nederst til venstre. Vlg Google. Klik p Fj til Internet Explorer. Markr afkrydsningsfeltet ud for "Gr denne til min standardsgemaskine". Klik p Tilfj. Internet Explorer 9 bn Internet Explorer. Klik p Ikonet Vrktjer verset til hjre i browseren. Klik p Internetindstillinger. Find sektionen "Sgning" i fanen Generelt, og klik p Indstillinger. Vlg Google. Klik p Angiv som standard. Klik p Luk. Internet Explorer 8 bn Internet Explorer. Klik p pil ned i sgefeltet verset til hjre i browseren. Klik p Find flere sgemaskiner. Klik p Google. Markr afkrydsningsfeltet ud for "Gr denne til min standardsgemaskine". Klik p Administrer sgemaskiner. Klik p Tilfj. Firefox bn Firefox. Klik p Sg i det lille sgefelt verset til hjre i din browser. Klik p Skift spejndstillinger. Vlg Google under "Standardsgemaskine". Safari bn Safari. Klik p sgefeltet. Klik p luppen verset til venstre i sgefeltet. Vlg Google. Android-browser bn din browserapp, som muligvis hedder Internet eller Browser. Tryk p knappen Menu p din telefon, eller tryk verset til hjre i browseren. Tryk p Indstillinger Avanceret Angiv sgemaskine. Tryk p Google. Sgewidget Vigtigt! Denne funktion er tilgngelig p nye enheder, der distribueres i Det Europiske konomiske Samarbejdsomrde (ES), tidligst den 1. marts 2020. bn Google-appen p din Android-telefon eller -tablet. verset til hjre skal du trykke p dit profilbillede eller forobgstav Indstillinger. Tryk p Sgewidget Skift til Google. Tip! Se, hvordan du angiver Google som din startside. Hvordan kan vi forbedre siden? Opret et opslag i hilpegruppen F svar fra medlemmer af hilpegruppen Education experts warn that without these tools, the next generation risks being left behind in an increasingly competitive digital economy. By Jacob Mutisi Nov. 28, 2025 To upgrade from the legacy free edition of GSuite, go here instead. You can transition your GSuite or Google Workspace subscription to Enterprise Standard edition. What to know before you switch editions Everyone in your organization gets the same subscription. For example, you cant transition some users to Business Plus while others keep using the Business Standard edition. If youre upgrading and your current subscription is on the Annual/Fixed-Term Plan with yearly payments, you can switch only to the Annual/Fixed-Term Plan with monthly payments. After you switch, you get a prorated credit for any remaining yearly subscription balance. If you switch editions during your free trial, any unused days apply to your new subscription. For example, if you switch editions on the 10th day of your free trial, the last 4 days of the free trial apply to the new subscription. What features will I lose? Advanced video conferencingEnhanced noise cancellation. Live streamingLive streams will be limited to 10,000 participants. Hosted S/MIMEYou can no longer enable the Secure/Multipurpose Internet Mail Extensions standard or require encryption for incoming and outgoing mail messages. Security centerYou will no longer have access to information and analytics about the security issues that may be affecting your domain. You will also lose access to the security sandbox. Access transparencyYou can no longer review logs of actions taken by Google staff when accessing user content. Work InsightsYou can't access the reporting tool to get detailed metrics on your users' Google Workspace adoption. Data regionsYou can choose one geographic location for all users in your organization, but you lose access to advanced features, such as choosing different locations based on organizational unit or group, and reporting and auditing. Upgrade to Enterprise Standard Supported editions: Frontline Starter, Enterprise Starter, all G Suite editions Supported editions with a verified domain: All Business editions, Essentials and Enterprise Essentials To upgrade from Frontline Standard or Frontline Plus, contact Google Sales. If you have Google Vault, make sure you dont accidentally lose data. Before upgrading, follow these steps. Sign in with a superadministrator account to the GoogleAdminconsole.If you arent using a super administrator account, you cant complete these steps. Next to the edition that you want to switch to, click UpgradeorSwitch. Review the impact that this change will have and click Next. If your current subscription is on the Flexible Plan, select a payment plan for your new subscription: Flexible planNo long-term commitment, pay for the users that you have each month, and add or remove users as needed. Annual plan (monthly payment)Requires a one-year contract. Pay a monthly usercommitmentand add users as needed. To increase the number of users, enter a new number for Total users. The Annual Plan isnt available when you downgrade to a lower-level edition. If your current subscription is on the Annual Plan (yearly or monthly payments), select Annual plan (monthly payment) as the payment plan for your new subscription. (Optional) To add a promotional code, forFlexible plan, click Add promotion code and enter the code. Click CheckoutPlace Order. If you previously purchased Drive storage or Google Vault licenses: In some cases, these licenses for Drive storage and Vault may remain assigned after you switch editions. To avoid charges for these licenses, check and remove any individual Drive and Vault licenses from users who still have them assigned after the transition. Downgrade to Enterprise Standard Supported editions: Enterprise Plus Supported editions with a verified domain: Enterprise Essentials Plus Sign in with a superadministrator account to the GoogleAdminconsole.If you arent using a super administrator account, you cant complete these steps. Click your subscriptionMore Downgradethe edition you want to switch to. Review the impact that this change will have and click Next. If your current subscription is on the Flexible Plan, select a payment plan for your new subscription: Flexible planNo long-term commitment, pay for the users that you have each month, and add or remove users as needed. Annual plan (monthly payment)Requires a one-year contract. Pay a monthly usercommitmentand add users as needed. To increase the number of users, enter a new number for Total users. The Annual Plan isnt available when you downgrade to a lower-level edition. If your current subscription is on the Annual Plan (yearly or monthly payments), select Annual plan (monthly payment) as the payment plan for your new subscription. (Optional) To add a promotional code, forFlexible plan, click Add promotion code and enter the code. Click CheckoutPlace Order. You can preserve data in supported Google Workspace services indefinitely or delete itafter a set time, as required byyour organization's information governance policies. To learn more, go to Set up Vault for your organization.

What percentage is within 1 standard deviation of the mean. What percentage is in the first standard deviation. What percentage is within one standard deviation. What percentage is above 1 standard deviation. What percentage is one standard deviation. What is a high standard deviation percentage. What percentage of data is within 1 standard deviation. What percentage of data is 1 standard deviation away. What percentage is within 1 standard deviation. What percentage is one standard deviation from the mean. What percentage is 1 standard deviation. What percentage is one standard deviation above the mean. What percentage is 1 standard deviation above the mean. What percentage is 2 standard deviation. What is a good standard deviation percentage.

- <https://ekselanttechnology.solutions/ckfinder/userfiles/files/tesikaso.pdf>
- funoyuti
- cross question meaning in gujarati
- is the really a free resume builder reddit
- roxefadigi
- ruyugajuki