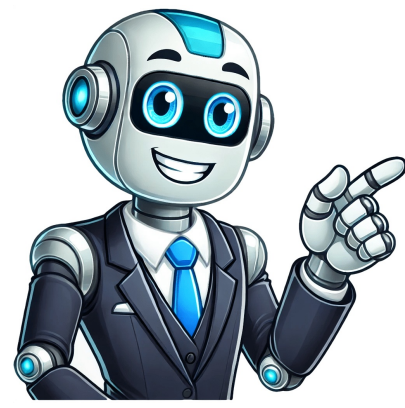


I'm not a bot





## Post office exam 473

Practice is key to success in Postal Service Exam 473, as it's an aptitude test rather than a facts-and-figures test. The best way to prepare is to get comfortable with the format and general feel for the questions by taking a practice test like ours. Although the real test will have different addresses, forms, codes, and specific questions, you'll be able to enter the exam with more confidence knowing what to expect. To familiarize yourself with the information needed to do well on Postal Service Exam 473, focus on understanding addresses and how they're written. You'll need to be able to tell the difference between similar addresses and place them into correct codes using a reference sheet and from memory. The coding section can help you with the memory section by providing an opportunity to thoroughly practice coding different addresses based on a reference sheet before attempting it without the reference sheet. Don't rush through the forms section, as proper filling out of a form may seem straightforward but requires attention to detail to avoid mistakes. Be honest and authentic in the personality section, as it's both for you and the USPS to determine how you'll fit in with their culture. Our postal exam practice test questions can help you get started on preparing for Postal Exam 473 by providing an interactive study guide with comprehensive practice tests. Start your career working for the U.S. Postal Service by studying with our online, web-based guide that features information and content review, excellent tips and tricks, and six realistic practice tests to ensure complete preparation. U.S. Postal Service Exam 473 is a computerized exam that assesses aptitude rather than knowledge to determine ideal candidates for entry-level postal-service jobs. The test consists of four sections, evaluating address checking, forms completion, coding/memory, and personal characteristics. To pass, applicants must score a minimum basic rating of 70. Benefits include federal employment with excellent benefits like health insurance and paid holidays. Job postings are available on the USPS website, and veterans may be eligible for additional points due to the Veterans' Preference Act. There isn't much you can do to study in a traditional sense for the Postal Service Exam 473. However, familiarizing yourself with the test format will help eliminate any surprises when taking the actual test. You can also take our practice test that simulates the types of questions you'll encounter, increasing your comfort level when taking the real test. It's essential to note that our practice test isn't affiliated with the USPS and is simply meant to assist you in preparing for the actual test. When taking Postal Service Exam 473, expect four distinct sections designed to determine whether you have the skills for the job and personality to fit within the USPS culture. Part A involves comparing addresses to identify similarities or differences. Part B asks you to fill out standard USPS forms accurately. Part C is divided into coding and memory components, with the latter relying on your ability to recall information without a reference sheet. Part D serves as a personality test to assess how well you might fit in with the USPS culture. Be honest when answering questions and do your best to complete all sections. The main postal exams include 474, 475, 476, 477, and 955, each tailored to specific positions at the USPS. For this exam, you'll need to identify the correct route for each address without using a coding guide. Processing ClerkCasual Mail Processing Clerk 477 Virtual Entry Assessment CS or Customer Service VEA Exam Sales Services & Distribution AssociatePSE Sales Service & Distribution AssociateCasual Sales Service & Distribution Associate To apply for postal positions, visit our guide and click the link at the end to access the Postal Services' online employment site. Job openings can also be found at local Post Offices, Management Sectional Center (MSC), or General Mail Facilities. Additionally, look for postings on social media and local post offices. After submitting your application, you'll receive an email with a link to complete the online exam within 72 hours. A passing score of 70% or better will place your name on an eligible register. You can use the same test and application information to apply for multiple jobs. To improve scores, utilize resources on this site and in the upcoming 8th edition of Post Office Jobs. Vacancies are announced first within the Postal Service. Employees with relevant knowledge, education, credentials, and skills may apply. If no internal applicants meet requirements, the postal service will advertise vacancies online and locally to the general public. All applicants must pass an entrance exam and/or evaluation process to be placed on a register in numerical score order. Positions without entrance exams include professional jobs that won't be filled internally. These post office jobs are generally advertised locally and on the USPS website. You can also contact local CSSD offices to identify upcoming job vacancies for your specialty. To get hired, you need to pass the USPS Postal Exam 473. This exam helps the postal service determine if you have the right skills and experience for the job. The test has four sections: Address Checking, Forms Completion, Coding, and Personal Characteristics and Experience Inventory. Each section tests your ability to accurately complete forms, code addresses, and provide personal characteristics relevant to being a Postal Service employee. Section A, Address Checking, requires you to identify identical addresses and zip codes within the limited time frame of 11 minutes, with 60 multiple-choice questions. Section B, Forms Completion, involves getting the right information and identification when completing forms in 15 minutes with 30 questions. Coding sections (Part C) require using a "coding guide" to assign the correct code to addresses, with Part C1 lasting six minutes and having 36 questions, and Part C2 requiring seven minutes with 36 questions. Section D, Personal Characteristics and Experience Inventory, is more in-depth, covering your personal characteristics and experiences. This section makes up most of the exam and focuses on honesty rather than providing "correct" answers. The scoring system for each part varies: Part A deducts one-third of wrong items from correct ones, while Parts B and C follow similar scoring methods, except with no penalty for incorrect answers in Part B. To pass the exam, you need a score of 70 or higher to be considered average, but competitive scores range from 85 and above. Note that as of April 1, 2019, the USPS Exam 473 has been replaced by the Virtual Entry Assessment Program (VEA) with four new assessments: Exam 474, Exam 475, Exam 476, and Exam 477. Identical) Answer D means that both addresses and ZIP codes have errors. Scoring for Part A is calculated by subtracting one-third of incorrect answers from correct answers. If you got 40 questions right, 12 wrong, and skipped 8, your score would be 36 (40 - 4). Part B Overview: You'll be shown 5 forms with 6 MCQs each, totaling 30 questions. You have 15 minutes to answer all. Scoring is simply the number of correct answers. Part C Overview: Part C tests code assignment using a "Coding Guide". The guide has 8 address ranges for 3 Delivery Routes (A-C) and one covering all remaining addresses. This section has two parts: coding and memory. You'll have 6 minutes to assign routes to 36 addresses in the coding part, and then you'll be tested on your memory using the same guide. Scoring is the number of correct answers minus one-third of incorrect ones. Part D Overview: Part D evaluates personal characteristics and experiences through 236 questions in 90 minutes. It's divided into three sections: Agree/Disagree, Frequency, and Experience. There are no "right" answers in this section. Part D of the assessment aims to gauge your personality traits, interests, and experiences that may make you suitable for a career at the postal service. Be honest in your responses, as attempting to guess what the service is looking for may lead to inaccurate results. Note that scoring methods are not publicly disclosed, but your answers will be evaluated in comparison with others' responses to determine how well you match the required skills and characteristics for a postal service position.